

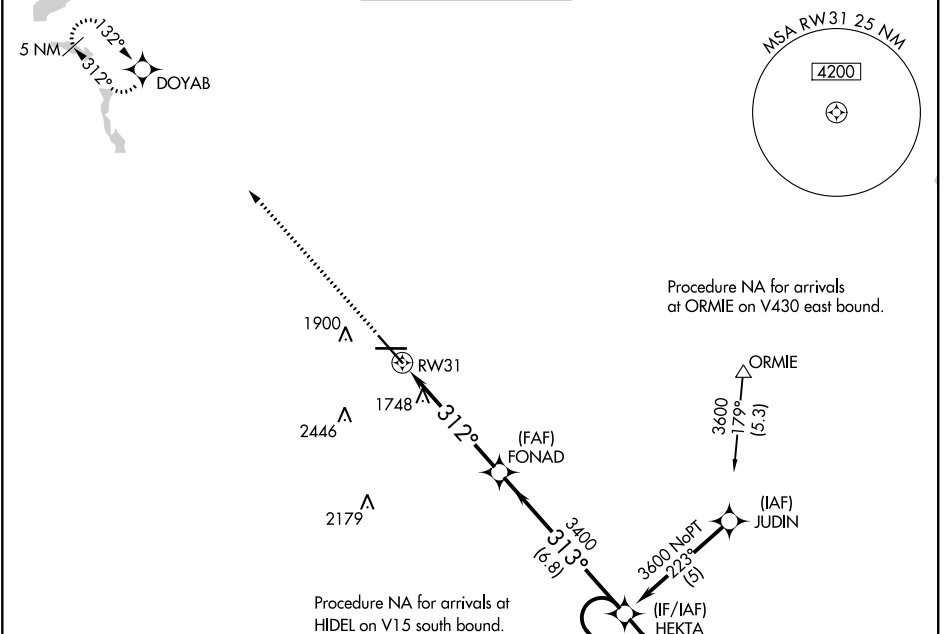
WAAS CH <b>66099</b> W31A	APP CRS <b>312°</b>	Rwy Idg TDZE Apt Elev	<b>7700</b> <b>1679</b> <b>1716</b>
---------------------------------	------------------------	-----------------------------	---

# RNAV (GPS) RWY 31

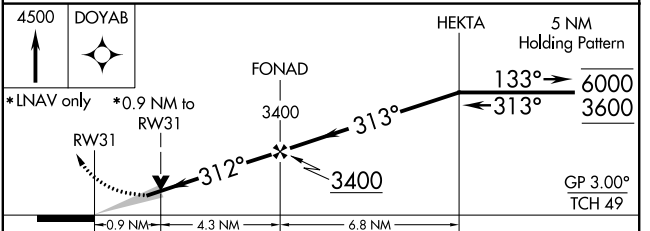
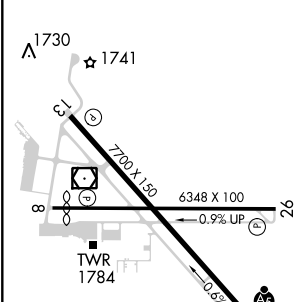
MINOT INTL (MOT)

RNP APCH. V A For uncompensated Baro-VNAV systems, LNAV/VNAV NA below -18°C or above 54°C. For inop ALS increase LNAV/VNAV visibility to RVR 4500.	MALSR AS	MISSED APPROACH: Climb to 4500 direct DOYAB and hold.
---	-------------	---

ASOS <b>118.725</b>	MINOT APP CON * <b>119.6 363.8</b>	MAGIC CITY TOWER * <b>118.2(CTAF) 251.125</b>	GND CON <b>121.9</b>	UNICOM <b>122.95</b>
------------------------	---------------------------------------	--	-------------------------	-------------------------



ELEV 1716	D	TDZE 1679
-----------	---	-----------



CATEGORY	A	B	C	D
LPV DA	1929/24 250 (300-1/2)			
LNAV/VNAV DA	1966/24 287 (300-1/2)			1966/40 287 (300-3/4)
LNAV MDA	2000/24	321 (300-1/2)	2000/26 321 (300-1/2)	2000/50 321 (300-1)
CIRCLING	2200-1 484 (500-1)	2240-1 524 (600-1)	2800-3 1084 (1100-3)	

REIL Rwy 13  
REIL Rwy 8 and 26  
HIRL Rwy 8-26 and 13-31

NC-1, 02 DEC 2021 to 30 DEC 2021

NC-1, 02 DEC 2021 to 30 DEC 2021