

WAAS CH <b>97616</b> <b>W08A</b>	APP CRS <b>084°</b>	Rwy Idg TDZE Apt Elev	<b>5955</b> <b>1712</b> <b>1716</b>
--	------------------------	-----------------------------	---

# RNAV (GPS) RWY 8

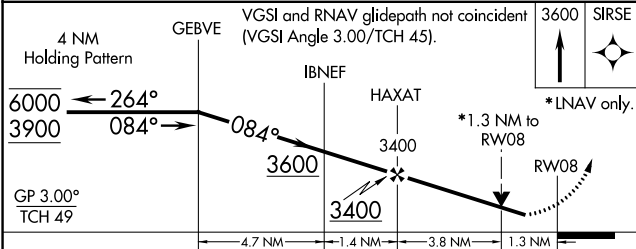
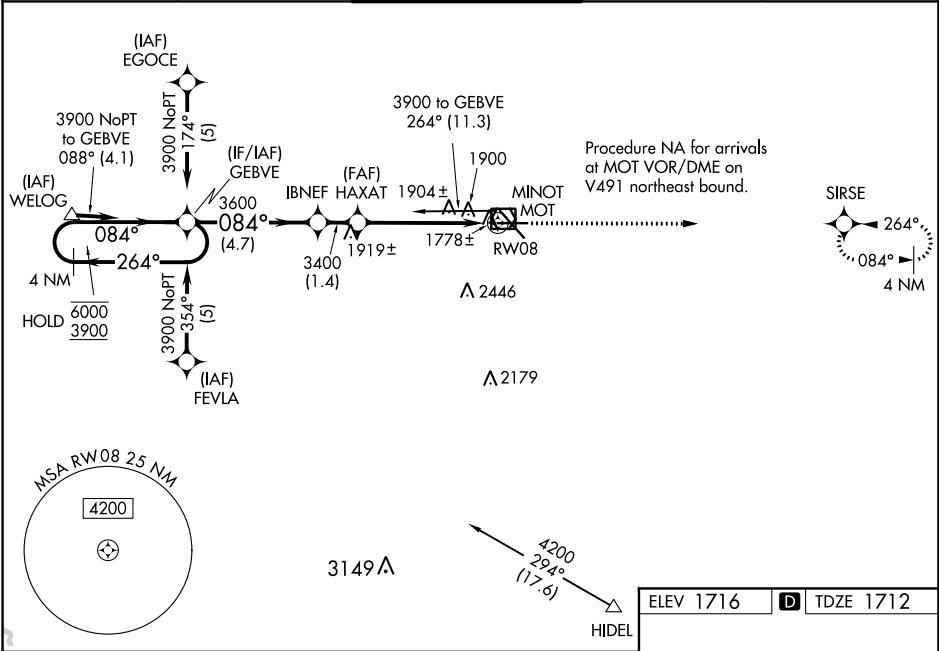
MINOT INTL (MOT)

RNP APCH.

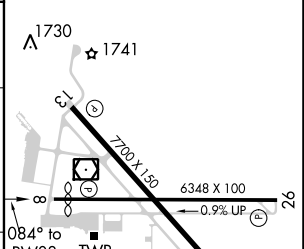
**▽** Rwy 8 helicopter visibility reduction below 3/4 SM NA.  
**▲** For uncompensated Baro-VNAV systems, LNAV/VNAV NA below -18°C or above 54°C.

MISSED APPROACH:  
Climb to 3600 direct SIRSE and hold.

ASOS <b>118.725</b>	MINOT APP CON * <b>119.6 363.8</b>	MAGIC CITY TOWER * <b>118.2 (CTAF) 0 251.125</b>	GND CON <b>121.9</b>	UNICOM <b>122.95</b>
------------------------	---------------------------------------	---	-------------------------	-------------------------



ELEV 1716	<b>D</b> TDZE 1712
-----------	--------------------



CATEGORY	A	B	C	D
LPV DA	1991-1 279 (300-1)			
LNAV/ VNAV DA	2218-1 3/4 506 (600-1 3/4)			
LNAV MDA	2160-1 448 (500-1)	2160-1 3/8 448 (500-1 3/8)	2160-1 1/2 448 (500-1 1/2)	
CIRCLING	2200-1 484 (500-1)	2240-1 524 (600-1)	2800-3 1084 (1100-3)	

REIL Rwy 13  
 REIL Rwy 8 and 26 **0**  
 HIRL Rwy 8-26 and 13-31 **0**

NC-1, 02 DEC 2021 to 30 DEC 2021

NC-1, 02 DEC 2021 to 30 DEC 2021