

WAAS CH <b>99732</b> <b>W10A</b>	APP CRS <b>101°</b>	Rwy Idg <b>8005</b> TDZE <b>38</b> Apt Elev <b>40</b>
--	------------------------	---

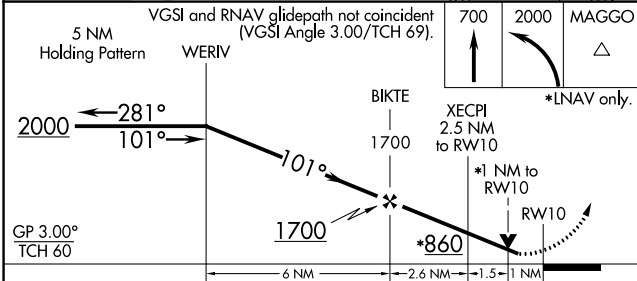
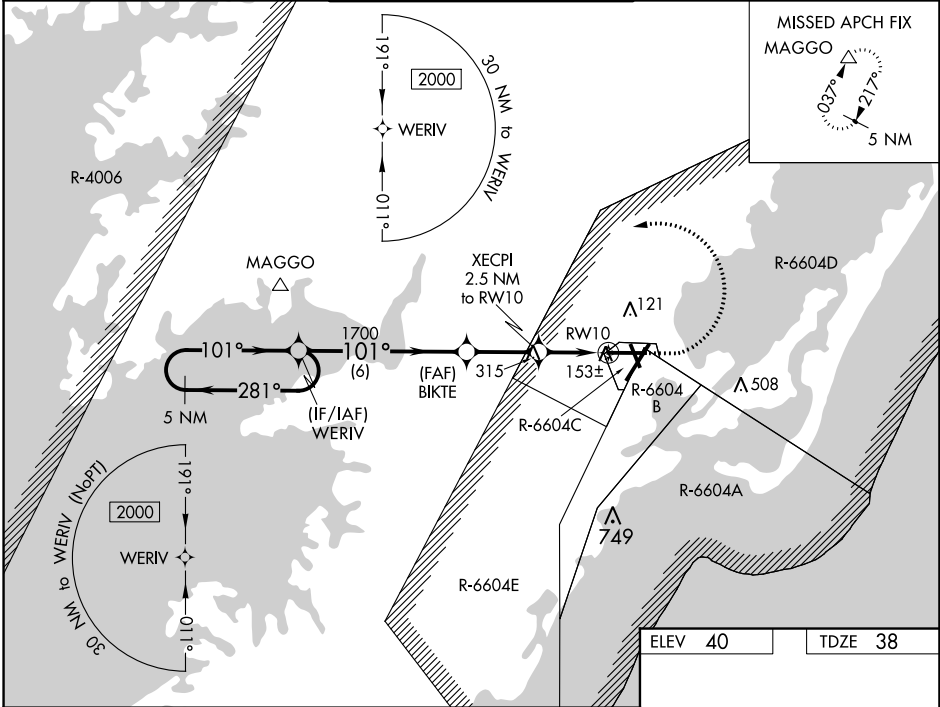
# RNAV (GPS) RWY 10

WALLOPS FLIGHT FACILITY (WAL)

**▽** DME/DME RNP -0.3 NA. Rwy 10 helicopter visibility reduction below 3/4 SM NA. When local altimeter setting not received, use Salisbury altimeter setting and increase all DA 60 feet and all visibilities 1/4 SM. Increase all MDA 60 feet and all Cat C and D visibilities 1/4 SM. Baro-VNAV and VDP NA when using Salisbury altimeter setting. For uncompensated Baro-VNAV systems, LNAV/VNAV NA below -11°C (13°F) or above 54°C (130°F).

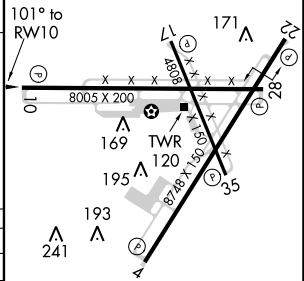
**MISSED APPROACH:** Climb to 700 then climbing left turn to 2000 direct MAGGO and hold.

ASOS <b>119.175</b>	PATUXENT APP CON ★ <b>127.95 314.0</b>	WALLOPS TOWER ★ <b>126.5 (CTAF) 306.975 (CTAF)</b>	GND CON <b>127.875 269.325</b>	CLNC DEL <b>121.7</b>
------------------------	---	---	-----------------------------------	--------------------------



ELEV <b>40</b>	TDZE <b>38</b>
----------------	----------------

CATEGORY	A	B	C	D
LPV DA	330-1	292 (300-1)		
LNAV/VNAV DA	443-1 1/4	405 (500-1 1/4)		
LNAV MDA	420-1 382 (400-1)	420-1 1/8 382 (400-1 1/8)		
CIRCLING	600-1 560 (600-1)	620-1 1/2 580 (600-1 1/2)	860-2 3/4 820 (900-2 3/4)	



REIL all Rwys  
HIRL Rws 4-22, 10-28 and 17-35

NE-3, 02 DEC 2021 to 30 DEC 2021

NE-3, 02 DEC 2021 to 30 DEC 2021