

VORTAC SWL 112.4 Chan 71	APP CRS 190°	Rwy Idg 4808 TDZE 39 Apt Elev 40
---------------------------------------	------------------------	---

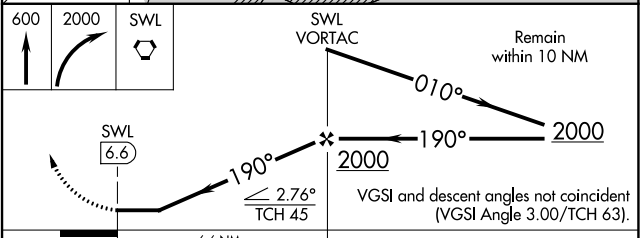
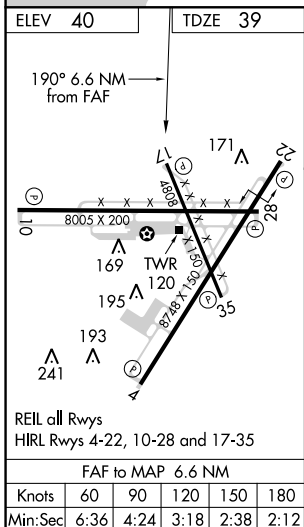
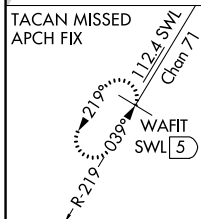
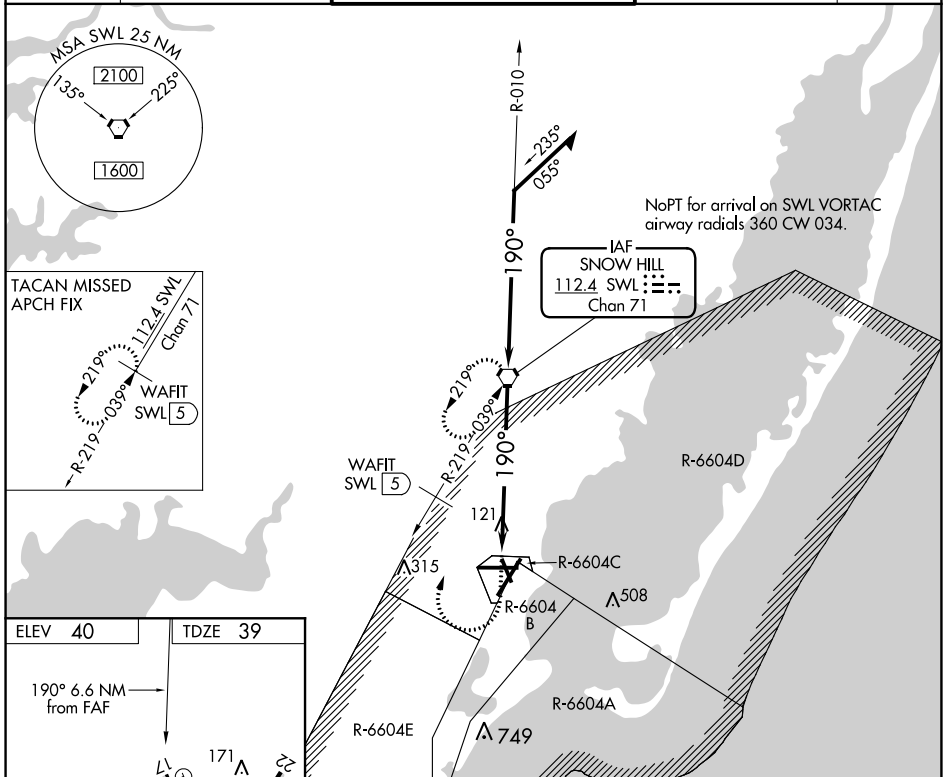
VOR or TACAN RWY 17

WALLOPS FLIGHT FACILITY (WAL)

⚠ When local altimeter setting not received, use Salisbury altimeter setting and increase all MDA 60 feet and S-17 Cats C/D and Circling Cat C visibility ¼ mile. Helicopter visibility reduction below ¾ SM NA.

MISSED APPROACH: Climb to 600 then climbing right turn to 2000 direct SWL VORTAC and hold. (TACAN aircraft climb to 600 then climbing right turn to 2000 on heading 300° and SWL VORTAC R-219 to WAFIT/SWL 5 DME and hold SW, LT 039° inbound.)

ASOS 119.175	PATUXENT APP CON ★ 127.95 314.0	WALLOPS TOWER ★ 126.5 (CTAF) 0 306.975 (CTAF) 0	GND CON 127.875 269.325	CLNC DEL 121.7
------------------------	---	---	-----------------------------------	--------------------------



CATEGORY	A	B	C	D
S-17	540-1	501 (500-1)	540-1⅜	501 (500-1⅜)
C CIRCLING	600-1	560 (600-1)	620-1½	860-2¾ 580 (600-1½) 820 (900-2¾)

NE-3, 02 DEC 2021 to 30 DEC 2021

NE-3, 02 DEC 2021 to 30 DEC 2021