

VOR/DME EWN 113.6 Chan 83	APP CRS 226°	Rwy Idg 6153 TDZE 17 Apt Elev 18
---	------------------------	---

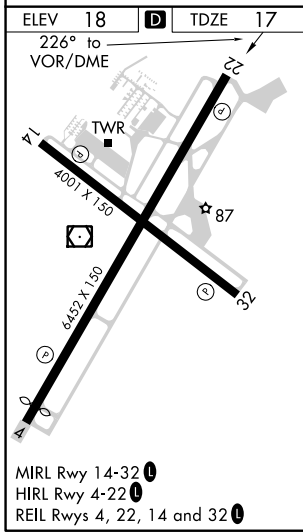
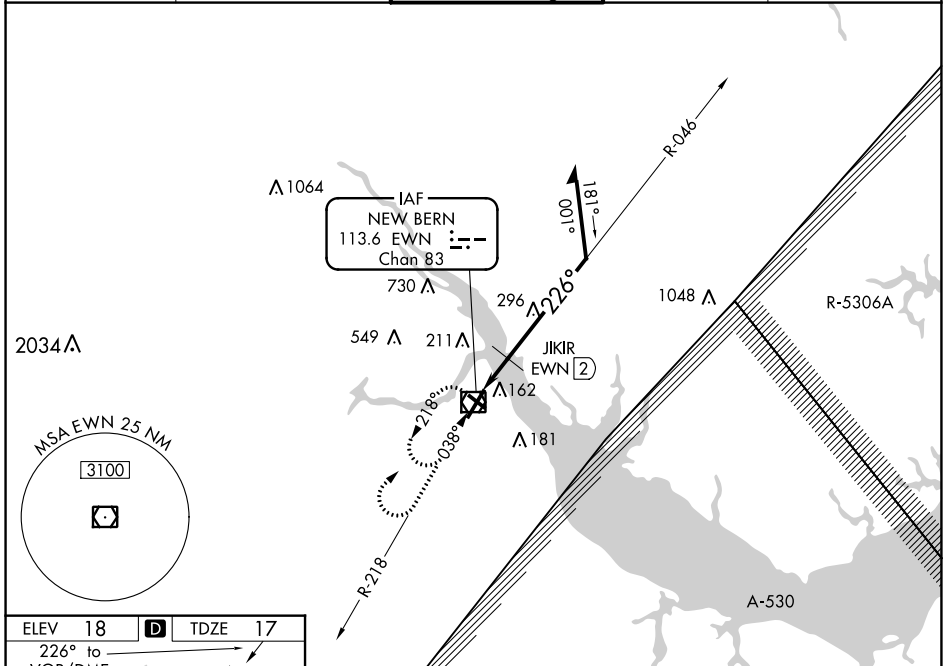
VOR RWY 22

COASTAL CAROLINA RGNL (EWN)

⚠ Rwy 14, 32 helicopter visibility reduction below 1 SM NA. Rwy 22 helicopter visibility reduction below 3/4 SM NA. Circling Rwy 14, 32 NA at night. JKIR fix minimums:
⚠ S-22 Cat D minimums NA when using Cherry Point altimeter setting. When local altimeter setting not received, use Cherry Point altimeter setting and increase all MDAs 40 feet and Circling Cat D visibility 1/4 SM and JKIR fix minimums Circling Cat C/D visibility 1/4 SM.

MISSED APPROACH: Climb to 1000 then climbing right turn to 2000 direct EWN VOR/ DME and hold, continue climb-in-hold to 2000.

ASOS 118.525	CHERRY POINT APP CON 119.35 374.9	NEW BERN TOWER ★ 124.25 (CTAF) 0	CLNC DEL 121.7	GND CON 121.7
------------------------	---	--	--------------------------	-------------------------



1000	2000	EWN	EWN VOR/DME	Remain within 10 NM
↑	↷	☐	6000	
VGSI and descent angles not coincident (VGSI Angle 3.00/TCH 31). *640 when using Cherry Point altimeter setting.				
			JKIR EWN (2)	1800
			3.42° TCH 55	600*
			046°	
			226°	
2 NM				

CATEGORY	A	B	C	D
S-22	600-1	583 (600-1)	600-1 3/4	583 (600-1 3/4)
C CIRCLING	600-1	582 (600-1)	600-1 3/4 582 (600-1 3/4)	860-2 3/4 842 (900-2 3/4)
JKIR FIX MINIMUMS (DME REQUIRED)				
S-22	480-1	463 (500-1)	480-1 3/8	463 (500-1 3/8)
C CIRCLING	480-1 462 (500-1)	520-1 502 (600-1)	600-1 1/2 582 (600-1 1/2)	860-2 3/4 842 (900-2 3/4)

SE-2, 02 DEC 2021 to 30 DEC 2021

SE-2, 02 DEC 2021 to 30 DEC 2021