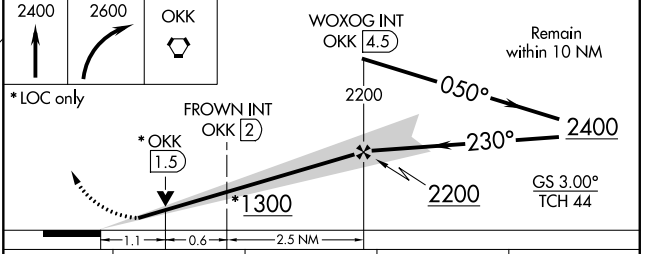
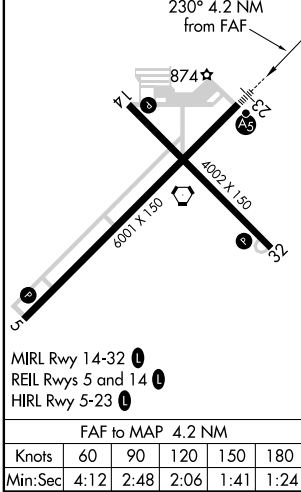
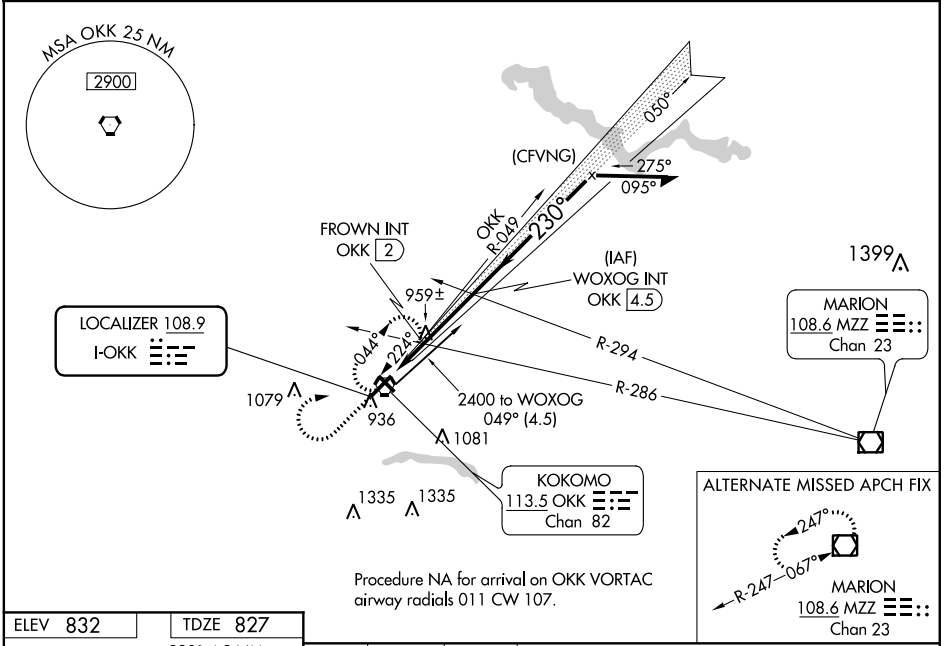


LOC I-OKK <b>108.9</b>	APP CRS <b>230°</b>	Rwy Idg TDZE Apt Elev	<b>6001</b> <b>827</b> <b>832</b>
---------------------------	------------------------	-----------------------------	---

# ILS or LOC RWY 23

KOKOMO MUNI (OKK)

		MALSR 	MISSED APPROACH: Climb to 2400 then climbing right turn to 2600 direct OKK VORTAC and hold.
AWOS-3PT <b>113.5</b>	GRISSOM APP CON* <b>121.05 338.275</b>	CLNC DEL <b>120.0</b>	UNICOM <b>123.0</b> (CTAF)



CATEGORY	A	B	C	D
S-ILS 23	1027-1/2 200 (200-1/2)			
S-LOC 23	1300-1/2	473 (500-1/2)	1300-1	473 (500-1)
CIRCLING	1300-1	468 (500-1)	1400-1 1/2 568 (600-1 1/2)	1640-2 1/2 808 (900-2 1/2)
FROWN FIX MINIMUMS (DUAL VOR RECEIVERS or DME REQUIRED)				
S-LOC 23	1220-1/2	393 (400-1/2)	1220-3/4	393 (400-3/4)
CIRCLING	1260-1 428 (500-1)	1300-1 468 (500-1)	1400-1 1/2 568 (600-1 1/2)	1640-2 1/2 808 (900-2 1/2)

EC-2, 02 DEC 2021 to 30 DEC 2021

EC-2, 02 DEC 2021 to 30 DEC 2021