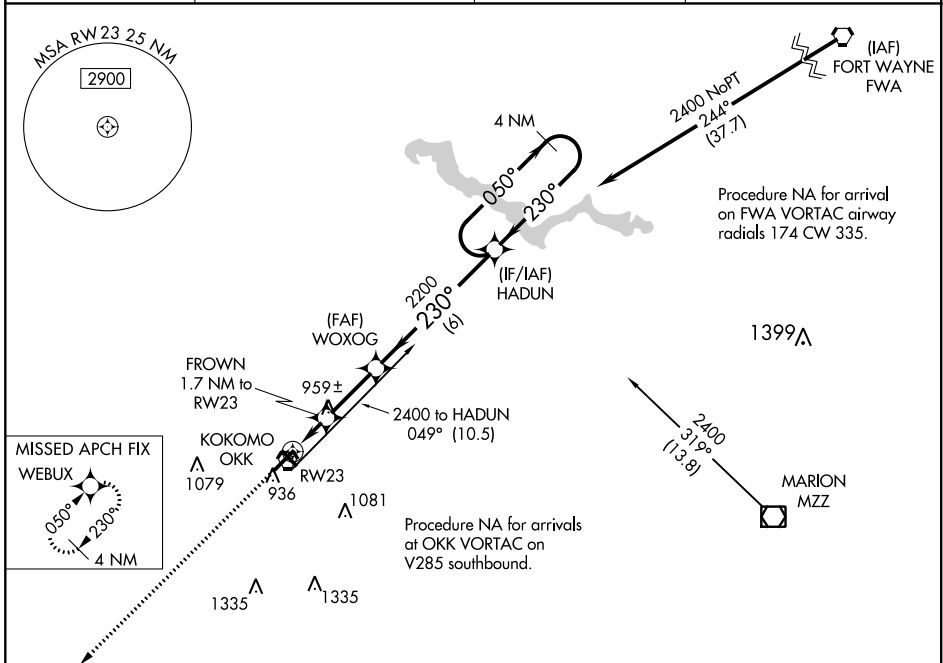


WAAS CH 40119 W23A	APP CRS 230°	Rwy Idg TDZE Apt Elev	6001 827 832
--	------------------------	-----------------------------	---

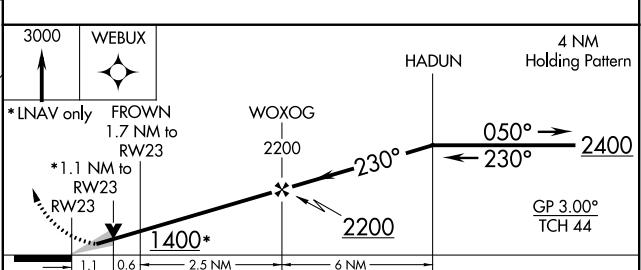
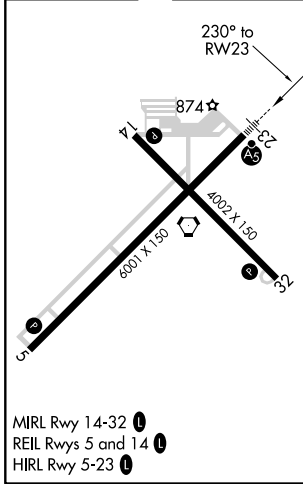
RNAV (GPS) RWY 23

KOKOMO MUNI (OKK)

<p>For uncompensated Baro-VNAV systems, LNAV/VNAV NA below -16°C (4°F) or above 54°C (130°F). DME/DME RNP-0.3 NA.</p>	<p>MALSR</p>	<p>MISSED APPROACH: Climb to 3000 direct WEBUX and hold.</p>	
		AWOS-3PT 113.5	GRISSOM APP CON * 121.05 338.275



ELEV 832	TDZE 827
----------	----------



CATEGORY	A	B	C	D
LPV DA	1027-1/2		200 (200-1/2)	
LNAV/VNAV DA	1224-7/8		397 (400-7/8)	
LNAV MDA	1220-1/2 393 (400-1/2)		1220-3/4 393 (400-3/4)	
CIRCLING	1260-1 428 (500-1)	1300-1 468 (500-1)	1400-1 1/2 568 (600-1 1/2)	1640-2 1/2 808 (900-2 1/2)

EC-2, 02 DEC 2021 to 30 DEC 2021

EC-2, 02 DEC 2021 to 30 DEC 2021