

VORTAC OKK 113.5 Chan 82	APP CRS 312°	Rwy Idg TDZE Apt Elev	4002 826 832
---------------------------------------	------------------------	-----------------------------	---

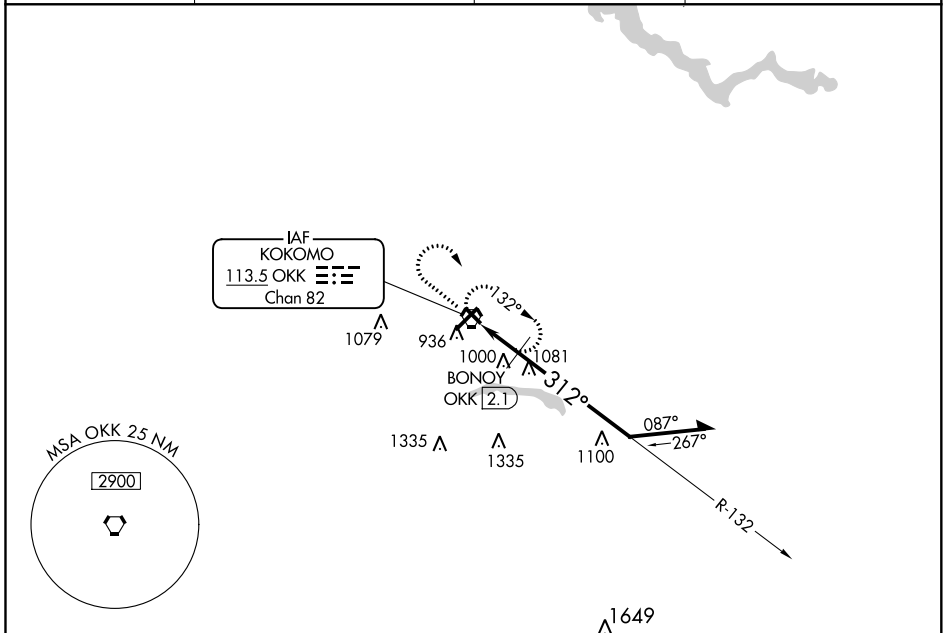
VOR RWY 32

KOKOMO MUNI (OKK)

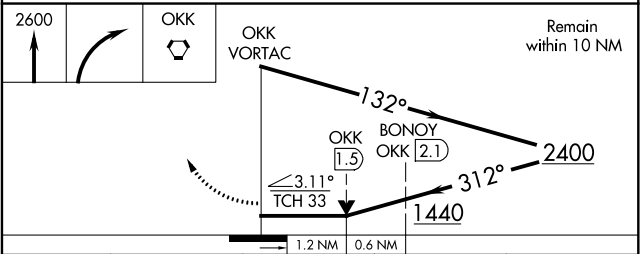
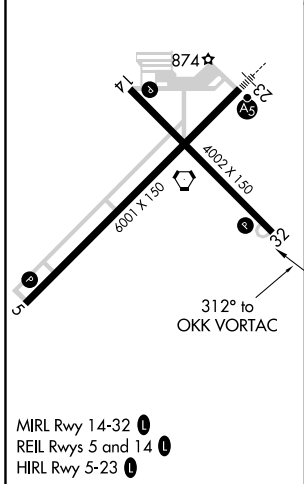
⚠ Rwy 32 helicopter visibility reduction below 3/4 SM NA.

MISSED APPROACH: Climb to 2600 then right turn direct OKK VORTAC and hold.

AWOS-3PT 113.5	GRISSOM APP CON* 121.05 338.275	CLNC DEL 120.0	UNICOM 123.0 (CTAF) 0
--------------------------	---	--------------------------	---------------------------------



ELEV 832	TDZE 826
----------	----------



CATEGORY	A	B	C	D
S-32	1440-1	614 (700-1)	1440-1¾	614 (700-1¾)
C CIRCLING	1440-1	608 (700-1)	1440-1¾ 608 (700-1¾)	1640-2½ 808 (900-2½)
BONOY FIX MINIMUMS				
S-32	1260-1	434 (500-1)	1260-1¼	434 (500-1¼)
C CIRCLING	1260-1 428 (500-1)	1300-1 468 (500-1)	1400-1½ 568 (600-1½)	1640-2½ 808 (900-2½)