

VOR/DME LOZ 116.55 Chan 112 (Y)	APP CRS 025°	Rwy Idg 5000 TDZE 1212 Apt Elev 1212
---	------------------------	---

VOR RWY 6

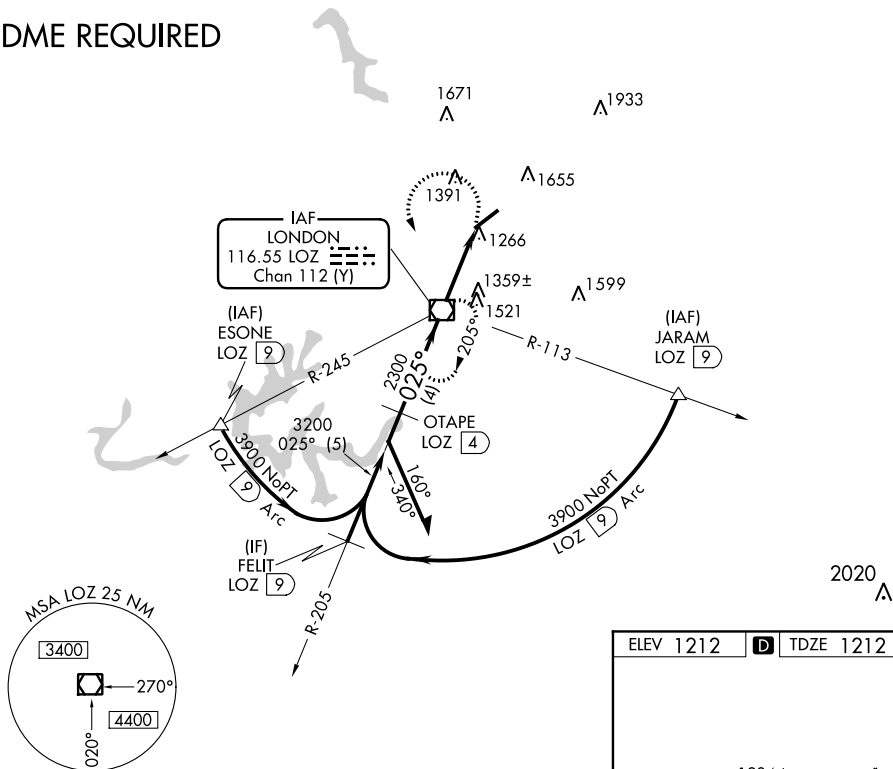
LONDON/CORBIN/MAGEE (LOZ)

⚠ When local altimeter setting not received, use Somerset altimeter setting: increase all MDAs 100 feet and S-6 Cat C/D and Circling Cat C/D visibility ¼ SM. Night landing: Rwy 6 NA.

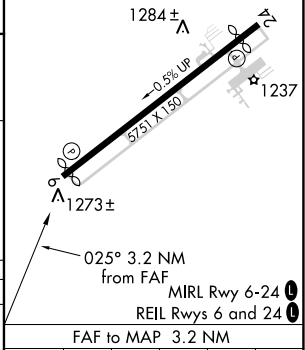
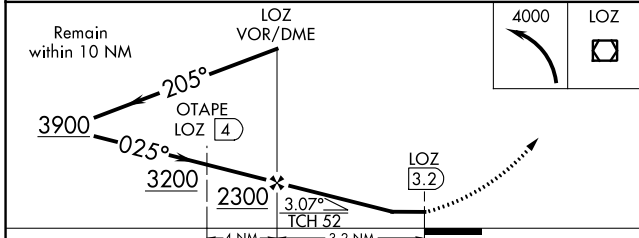
MISSED APPROACH: Climbing left turn to 4000 direct LOZ VOR/DME and hold, continue climb-in-hold to 4000.

ASOS 119.075	INDIANAPOLIS CENTER 124.625 371.925	UNICOM 123.0 (CTAF) 0
------------------------	---	---------------------------------

DME REQUIRED



ELEV 1212	D TDZE 1212
-----------	--------------------



CATEGORY	A	B	C	D	Knots	60	90	120	150	180
S-6	1620-1	408 (500-1)	1620-1¼	408 (500-1¼)	Min:Seq	3:12	2:08	1:36	1:17	1:04
CIRCLING	1780-1 568 (600-1)	2040-1¼ 828 (900-1¼)	2040-2½ 828 (900-2½)	2040-2¾ 828 (900-2¾)						

VOR RWY 6

SE-1, 02 DEC 2021 to 30 DEC 2021

SE-1, 02 DEC 2021 to 30 DEC 2021