

APP CRS
264°

Rwy Idg **5286**
TDZE **533**
Apt Elev **545**

RNAV (GPS) RWY 26

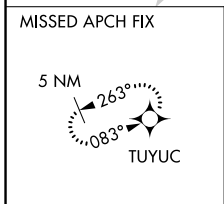
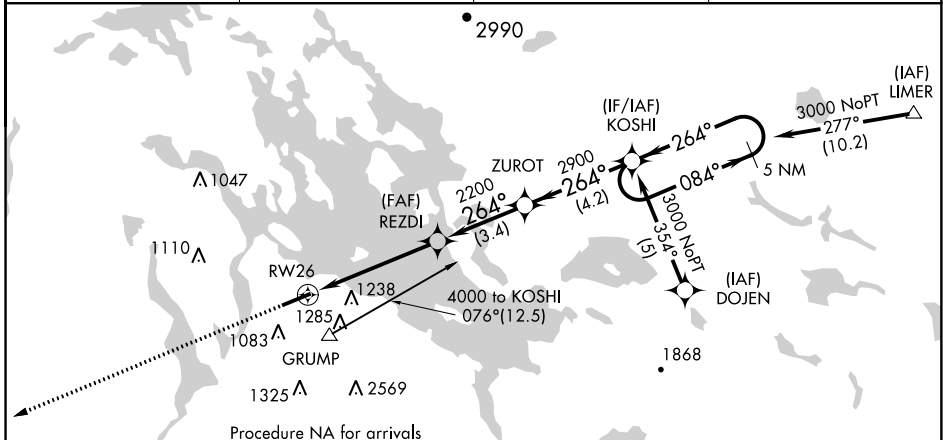
LACONIA MUNI (LCI)

RNP APCH - GPS

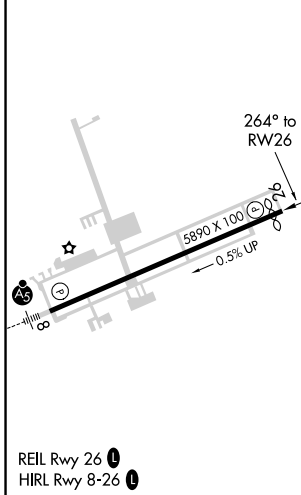
▼ Rwy 26 helicopter visibility reduction below 1 SM NA. If local altimeter setting not received, use Concord altimeter setting and increase all MDAs 80 feet. Circling NA south of Rwy 8-26.
▲ Straight-in Rwy 26 NA at night, Circling Rwy 26 NA at night.

MISSED APPROACH: Climb to 4400 direct TUYUC and hold, continue climb-in-hold to 4400.

AWOS-3PT 133.525	BOSTON APP CON 134.75 254.25	CLNC DEL 119.85	UNICOM 123.0 (CTAF) 0
----------------------------	--	---------------------------	---------------------------------



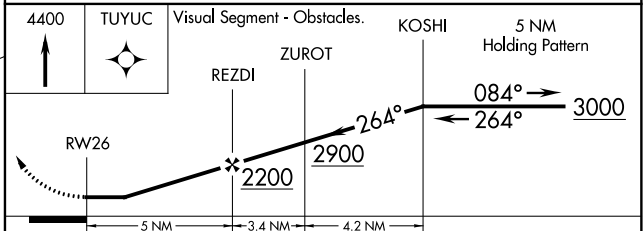
ELEV 545 **D** TDZE 533



CONCORD CON

Procedure NA for arrival at CON VOR/DME on V322 southwest bound and V93 westbound.

MSA RW26 2.5 NM
5600



CATEGORY	A	B	C	D
LNAV MDA	1420-1¼ 887 (900-1¼)	887 (900-1¼)	1420-2¾ 887 (900-2¾)	1420-3 887 (900-3)
C CIRCLING	1420-1¼ 875 (900-1¼)	1600-1½ 1055 (1100-1½)	2160-3 1615 (1700-3)	2860-3 2315 (2400-3)

NE-1, 02 DEC 2021 to 30 DEC 2021

NE-1, 02 DEC 2021 to 30 DEC 2021