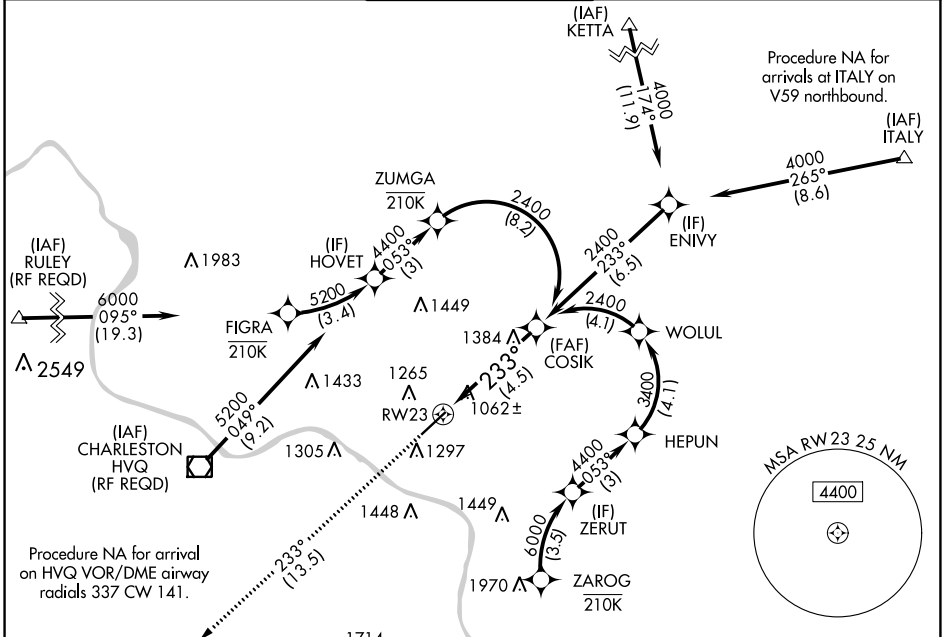


APP CRS	Rwy Idg	<b>6215</b>
<b>233°</b>	TDZE	<b>931</b>
	Apt Elev	<b>947</b>

# RNAV (RNP) Z RWY 23

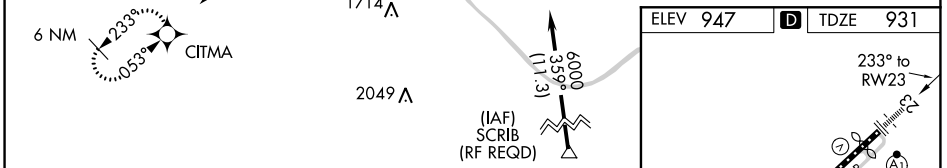
YEAGER (CRW)

RNP AR APCH.		ALSF-1	MISSED APPROACH: Climb to 4000 on track 233° to CITMA and hold.	
For uncompensated Baro-VNAV systems, procedure NA below -15°C or above 54°C. For inop ALS, increase RNP 0.30 all Cats visibility to 1½ SM.				
ATIS	CHARLESTON APP CON	CHARLESTON TOWER	GND CON	CLNC DEL
<b>127.6</b>	<b>124.1 269.125</b>	<b>125.7 257.8</b>	<b>121.8 348.6</b>	<b>118.55</b>



NE-4, 02 DEC 2021 to 30 DEC 2021

NE-4, 02 DEC 2021 to 30 DEC 2021



4000	CITMA	See planview for multiple IF locations.			
↑ tr 233°					
RW23		COSIK 2400		2400	
GP 3.00°		TCH 56		4.5 NM	
CATEGORY	A	B	C	D	
RNP 0.30 DA	1419/60		488 (500-1¼)		
<b>AUTHORIZATION REQUIRED</b>					

ELEV 947	<b>D</b>	TDZE 931
HIRL Rwy 5-23		
REIL Rwy 5		