

LOC I-EEEN 108.9	APP CRS 018°	Rwy Idg TDZE Apt Elev	6201 488 488
----------------------------	------------------------	-----------------------------	---

ILS or LOC RWY 2

DILLANT-HOPKINS (EEN)

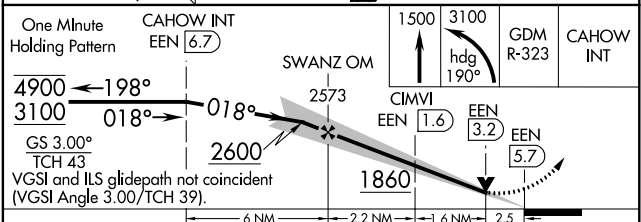
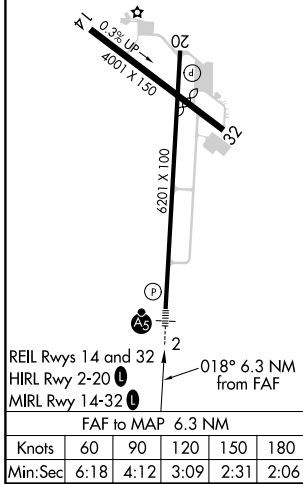
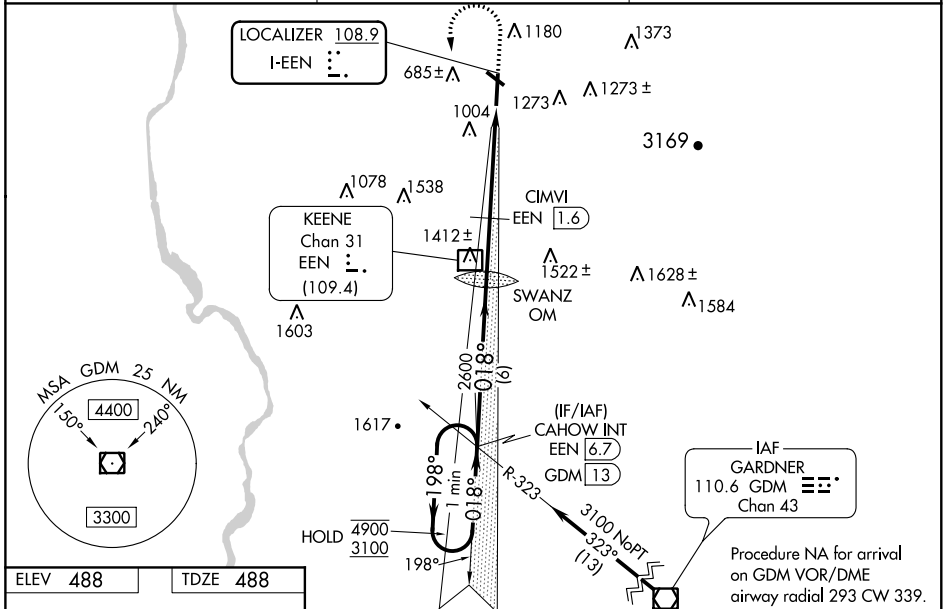
ADF required for LOC only.

⚠ Circling Rwy 32 NA at night. Rwy 2 helicopter visibility reduction below 3/4 SM NA. Inop table does not apply to S-ILS 2 all Cats, S-LOC 2 Cats A/C/D and S-LOC 2 CIMVI fix minimums Cat A. For inop ALS increase CIMVI fix minimums: S-LOC 2 Cat B to 1 1/4 SM and Cat C/D to 2 1/2 SM.

MALSR

MISSED APPROACH: Climb to 1500 then climbing left turn to 3100 on heading 190° and GDM VOR/DME R-323 to CAHOW INT/GDM VOR/DME 13 DME and hold.

AWOS-3PT 119.025	BOSTON CENTER 123.75 338.2	UNICOM 123.0 (CTAF) 0
----------------------------	--------------------------------------	---------------------------------



CATEGORY	A	B	C	D
S-ILS 02	859-1 371 (400-1)			
S-LOC 02	1860-1 1/4	1372 (1400-1 1/4)	1860-3	1372 (1400-3)
C CIRCLING	1860-1 1/4 1372 (1400-1 1/4)	1860-1 1/2 1372 (1400-1 1/2)	1860-3 1372 (1400-3)	1980-3 1492 (1500-3)
CIMVI FIX MINIMUMS				
S-LOC 02	1320-1	832 (900-1)	1320-1 7/8	832 (900-1 7/8)
C CIRCLING	1380-1 1/4 892 (900-1 1/4)	1480-1 1/2 992 (1000-1 1/2)	1760-3 1272 (1300-3)	1980-3 1492 (1500-3)

KEENE, NEW HAMPSHIRE
Amdt 5 07OCT21

42°54'N - 72°16'W

DILLANT-HOPKINS (EEN)

ILS or LOC RWY 2

NE-1, 02 DEC 2021 to 30 DEC 2021

NE-1, 02 DEC 2021 to 30 DEC 2021