

LOC I-TWF <b>108.3</b>	APP CRS <b>258°</b>	Rwy Idg <b>8703</b> TDZE <b>4154</b> Apt Elev <b>4154</b>
---------------------------	------------------------	---

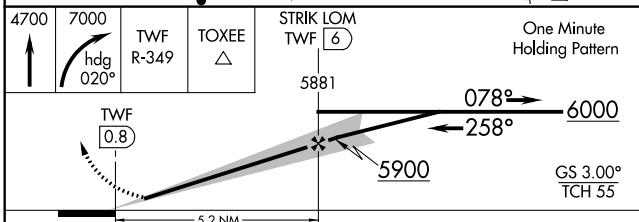
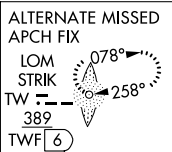
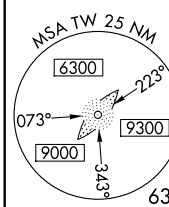
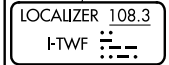
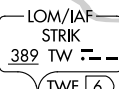
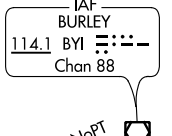
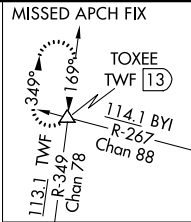
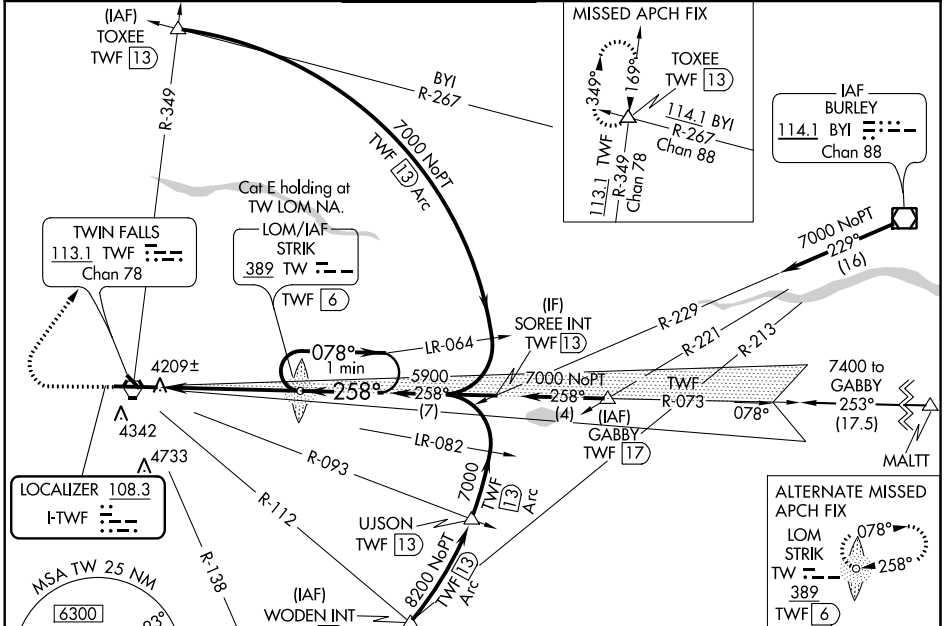
**ILS or LOC RWY 26**  
JOSLIN FLD/MAGIC VALLEY RGNL (TWF')

**Night landing:** Rwy 30 NA. When local altimeter setting not received, use Jerome altimeter setting and increase all DA 49 feet, and all MDA 60 feet, increase S-LOC 26 Cat C-E visibility 1/8 mile. For inoperative MALSR when using local or Jerome altimeter setting, increase S-ILS 26 Cat E visibility 1/4 mile and S-LOC 26 Cat E visibility 1/2 mile. ADF or DME required.

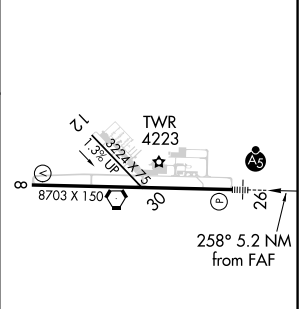


**MISSED APPROACH:** Climb to 4700 then climbing right turn to 7000 on heading 020° and TWF VORTAC R-349 to TOXEE INT/TWF 13 DME and hold.

ASOS <b>135.025</b>	TWIN FALLS APP CON* <b>126.7 353.75</b>	TWIN FALLS TOWER* <b>118.2 (CTAF) 0 317.5</b>	GND CON <b>121.7</b>	CLNC DEL <b>123.65</b>	UNICOM <b>122.95</b>
------------------------	--	--	-------------------------	---------------------------	-------------------------



ELEV 4154	TDZE 4154
-----------	-----------



CATEGORY	A	B	C	D	E
S-ILS 26		4354-1/2	200 (200-1/2)		
S-LOC 26		4480-1/2	326 (400-1/2)		
CIRCLING	4700-1 546 (600-1)	4780-1 626 (700-1)	5100-2 3/4 946 (1000-2 3/4)	5100-3	946 (1000-3)
REIL Rwy 8					
HIRL Rwy 8-26					
FAF to MAP 5.2 NM					
Knots	60	90	120	150	180
Min:Sec	5:12	3:28	2:36	2:05	1:44

NW-1, 02 DEC 2021 to 30 DEC 2021

NW-1, 02 DEC 2021 to 30 DEC 2021