

LOC I-MQY 111.1	APP CRS 321°	Rwy Idg TDZE Apt Elev	8038 518 543
---------------------------	------------------------	-----------------------------	---

ILS or LOC/DME RWY 32

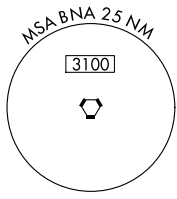
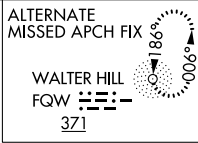
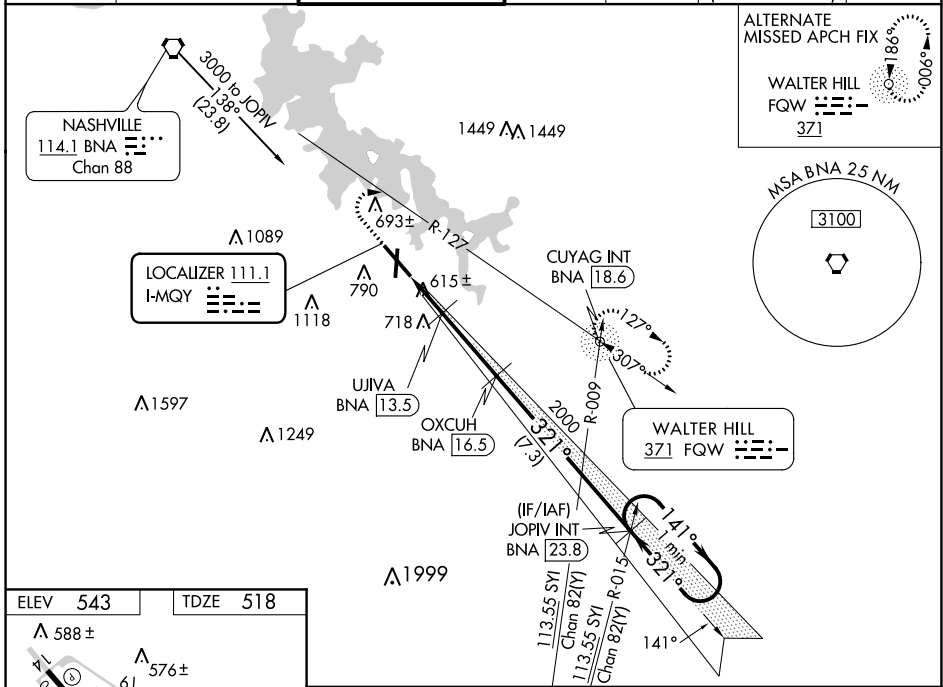
SMYRNA (MQY)

⚠ DME from BNA VORTAC, simultaneous reception of I-MQY and BNA DME required. For inop MALSRR, increase S-LOC 32 Cats C/D visibility to 1 mile. For inop MALSRR when using Nashville Intl altimeter setting, increase S-LOC 32 Cats C/D visibility ½ mile. When local altimeter setting not received, use Nashville Intl altimeter setting and increase all DA to 749 feet and all MDA 40 feet; increase S-LOC 32 Cats C/D visibility ½ mile and increase Circling Cats C/D visibility ¼ mile. VDP NA when using Nashville Intl altimeter setting.

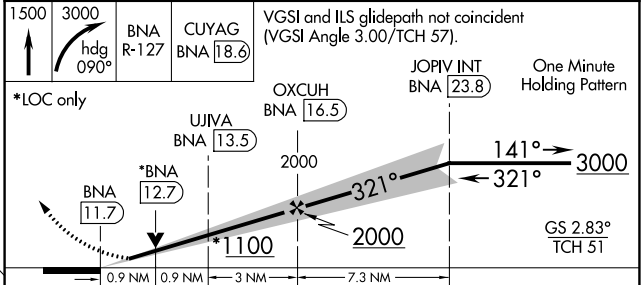
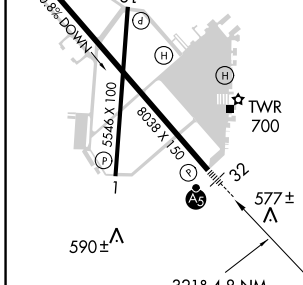


MISSED APPROACH: Climb to 1500 then climbing right turn to 3000 on heading 090° and BNA VORTAC R-127 to CUYAG INT/ BNA VORTAC 18.6 DME and hold.

AWOS-3PT 119.125	NASHVILLE APP CON 118.4 360.7	SMYRNA TOWER ✳ 118.5 (CTAF) 0 233.1	GND CON 121.4	CLNC DEL 121.4	CLNC DEL 121.7 (When twr closed)	UNICOM 122.95
----------------------------	---	---	-------------------------	--------------------------	---	-------------------------



ELEV 543	TDZE 518
----------	----------



CATEGORY	A	B	C	D
S-ILS 32	718-½ 200 (200-½)			
S-LOC 32	880-½ 362 (400-½)	880-⅝ 362 (400-⅝)		
C CIRCLING	1100-1 557 (600-1)	1200-1 657 (700-1)	1260-2 717 (800-2)	1480-2¾ 937 (1000-2¾)

- REIL Rwy 14 **1**
- HIRL Rwy 14-32 **1**
- MIRL Rwy 1-19 **1**
- REIL Rwy 1, 19, and 32

SE-1, 02 DEC 2021 to 30 DEC 2021

SE-1, 02 DEC 2021 to 30 DEC 2021