

WAAS CH <b>86632</b> W01A	APP CRS <b>006°</b>	Rwy Idg <b>5546</b> TDZE <b>519</b> Apt Elev <b>543</b>
---------------------------------	------------------------	---

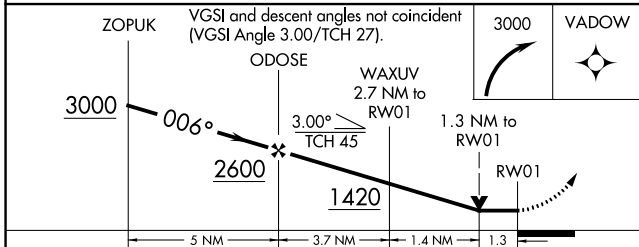
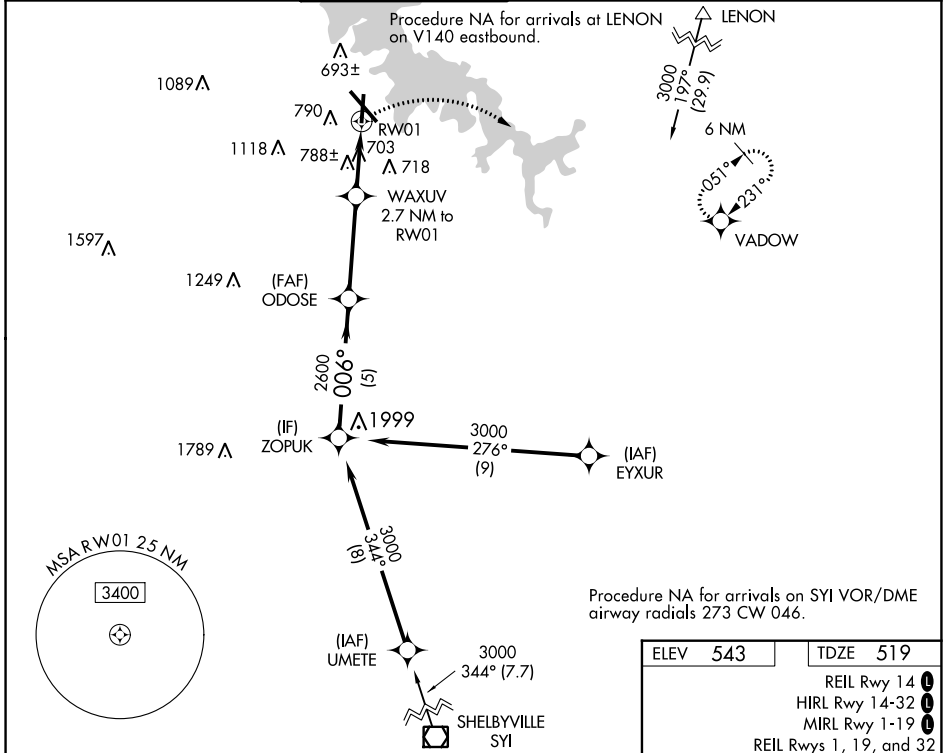
# RNAV (GPS) RWY 1

SMYRNA (MQY)

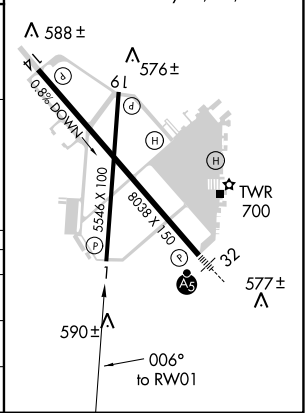
**⚠** DME/DME RNP-0.3 NA. When local altimeter setting not received, use Nashville Intl altimeter setting and increase all MDA 40. Helicopter visibility reduction below 3/4 SM NA.

**⚠** MISSED APPROACH: Climbing right turn to 3000 direct VADOW and hold.

AWOS-3PT <b>119.125</b>	NASHVILLE APP CON <b>118.4 360.7</b>	SMYRNA TOWER ★ <b>118.5 (CTAF) 0 233.1</b>	GND CON <b>121.4</b>	CLNC DEL <b>121.4</b>	CLNC DEL <b>121.7</b> (When twr closed)	UNICOM <b>122.95</b>
----------------------------	---	---	-------------------------	--------------------------	---	-------------------------



ELEV 543	TDZE 519
REIL Rwy 14	1
HIRL Rwy 14-32	1
MIRL Rwy 1-19	1
REIL Rws 1, 19, and 32	1



CATEGORY	A	B	C	D
LP MDA	960-1	441 (500-1)	960-1 3/8	441 (500-1 3/8)
LNAV MDA	1100-1	581 (600-1)	1100-1 3/4	581 (600-1 3/4)
<b>C</b> CIRCLING	1100-1 557 (600-1)	1200-1 657 (700-1)	1240-2 697 (700-2)	1480-3 937 (1000-3)

SE-1, 02 DEC 2021 to 30 DEC 2021

SE-1, 02 DEC 2021 to 30 DEC 2021