

LOC/DME I-HOT 111.5 Chan 52	APP CRS 053°	Rwy Idg 6595 TDZE 516 Apt Elev 540
---	------------------------	---

ILS or LOC RWY 5

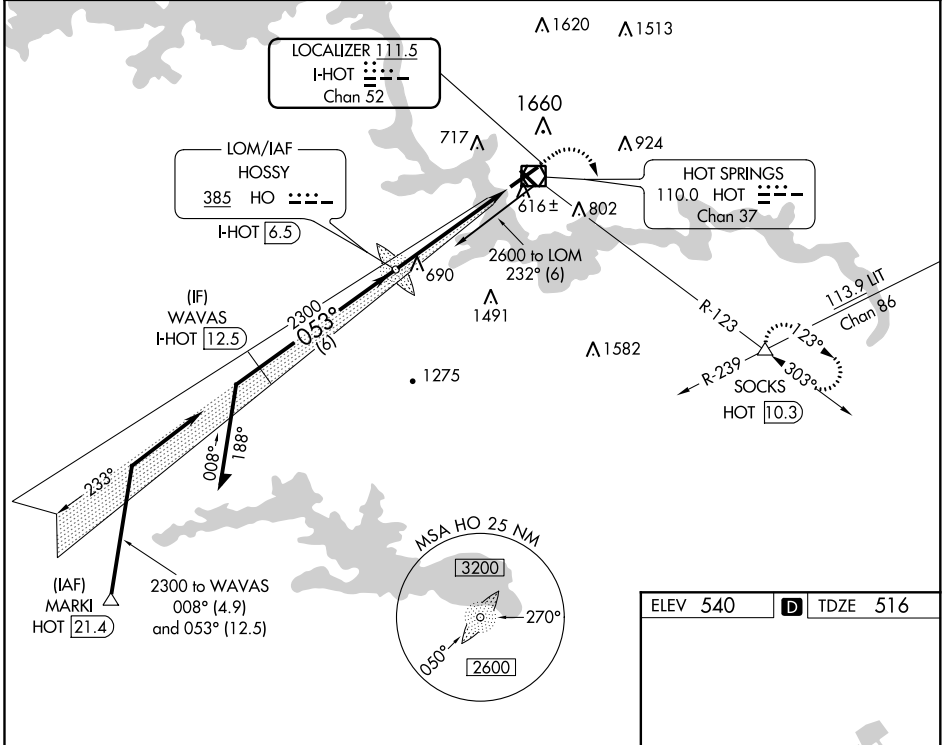
MEMORIAL FIELD (HOT)

ADF or DME required.

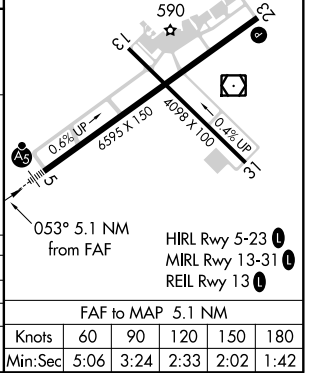
NA Circling NA northwest of Rwy 5-23. Use I-HOT DME when on localizer course.

MALS R MISSED APPROACH: Climb to 1000 then climbing right turn to 3000 on HOT VOR/DME R-123 to SOCKS INT/HOT 10.3 DME and hold.

ASOS 119.925	MEMPHIS CENTER 128.475 377.15	UNICOM 123.0 (CTAF)
------------------------	---	-------------------------------



CATEGORY	Remain within 10 NM		HOSSY LOM I-HOT 6.5	1000	3000	SOCKS
	2500	2300	2600			
S-ILS 5	732-1/2		216 (200-1/2)	*I-HOT 2.5		
S-LOC 5	940-1/2	424 (400-1/2)	940-3/4	424 (400-3/4)	*LOC only.	
CIRCLING	1080-1 540 (600-1)		1380-2 1/2	1620-3	I-HOT 1.4	
			840 (900-2 1/2)	1080 (1100-3)		



SC-1, 02 DEC 2021 to 30 DEC 2021

SC-1, 02 DEC 2021 to 30 DEC 2021