

WAAS CH <b>42723</b> <b>W13A</b>	APP CRS <b>128°</b>	Rwy Idg TDZE Apt Elev	<b>4102</b> <b>402</b> <b>403</b>
--	------------------------	-----------------------------	---

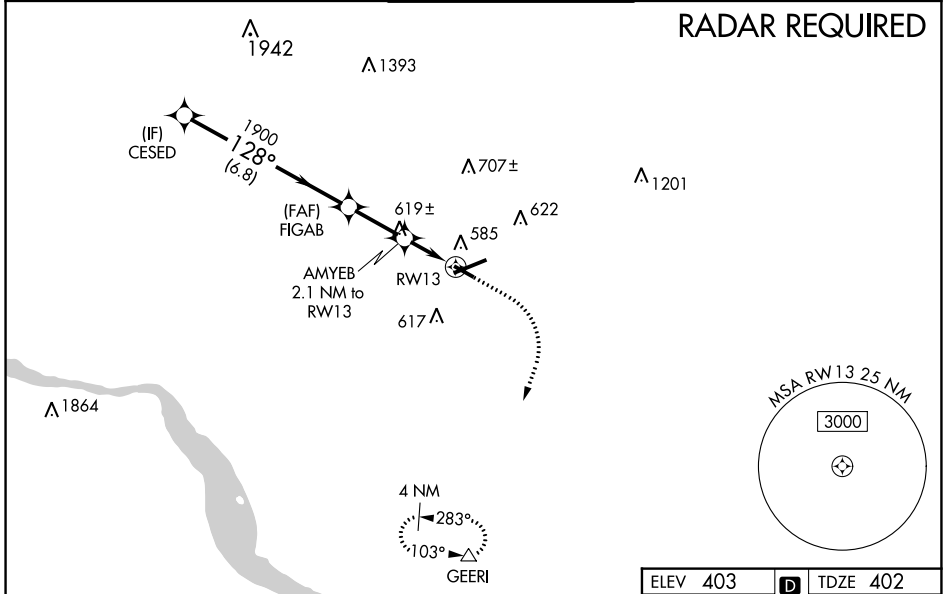
# RNAV (GPS) RWY 13

LANCASTER (LNS)

**⚠** Night landing: Rwy 13, 31 NA. Baro-VNAV NA when using Harrisburg Intl altimeter setting. For uncompensated Baro-VNAV systems, LNAV/VNAV NA below -15°C (5°F) or above 31°C (87°F). DME/DME RNP-0.3 NA. Helicopter visibility reduction below 1 SM NA. When local altimeter setting not received, use Harrisburg Intl altimeter setting and increase all DA 64 feet and all MDA 80 feet, increase LPV and LNAV/VNAV visibility all Cats 1/8, and LNAV and Circling Cats C and D 1/4.

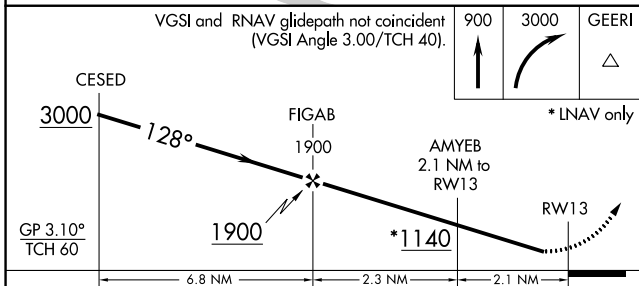
**MISSED APPROACH:**  
Climb to 900 then climbing right turn to 3000 direct GEERI and hold

ATIS <b>125.675</b>	HARRISBURG APP CON <b>126.45 281.525</b>	<b>LANCASTER TOWER *</b> <b>120.9 (CTAF) 251.1</b>	GND CON <b>121.8</b>	UNICOM <b>122.95</b>
------------------------	---	---	-------------------------	-------------------------



NE-4, 02 DEC 2021 to 30 DEC 2021

NE-4, 02 DEC 2021 to 30 DEC 2021



ELEV 403	<b>D</b>	TDZE 402
----------	----------	----------

CATEGORY	A	B	C	D
LPV DA		687-1	285 (300-1)	
LNAV/VNAV DA		894-1 1/8	492 (500-1 1/8)	
LNAV MDA	880-1	478 (500-1)	880-1 3/8	478 (500-1 3/8)
CIRCLING	940-1	537 (600-1)	960-1 1/2	1060-2
			557 (600-1 1/2)	657 (700-2)

