

WAAS CH 77915 W08A	APP CRS 077°	Rwy Idg TDZE 399 Apt Elev 403	6118
--	------------------------	---	-------------

RNAV (GPS) RWY 8

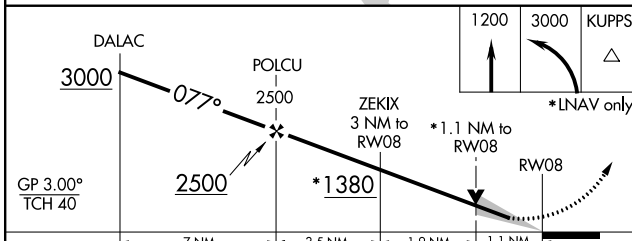
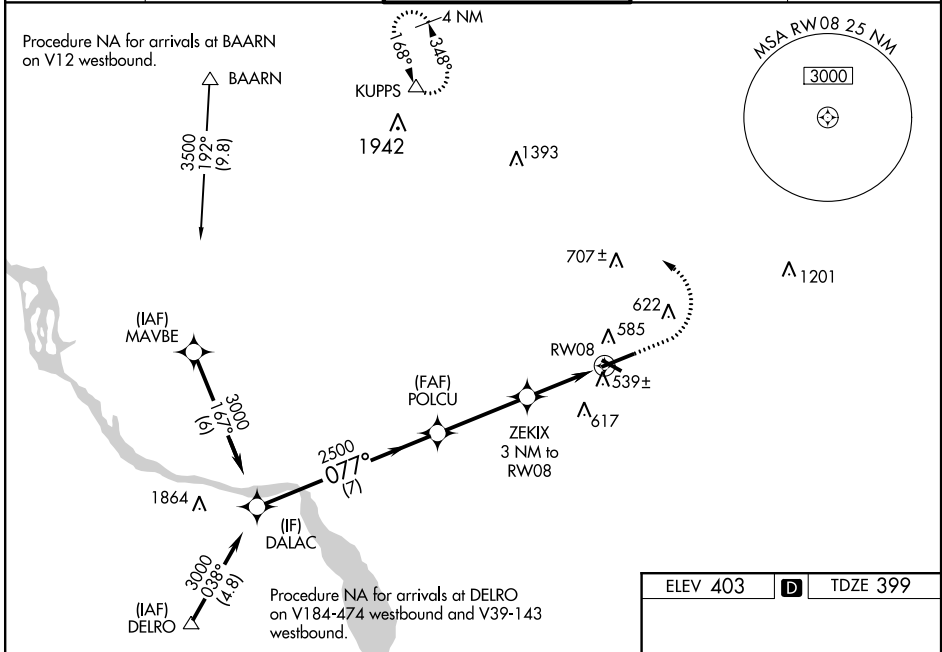
LANCASTER (LNS)

For uncompensated Baro-VNAV systems, LNAV/VNAV NA below -15°C (5°F) or above 54°C (130°F). DME/DME RNP-0.3 NA. When local altimeter setting not received, use Harrisburg Intl altimeter setting and increase all DA 64 feet and all MDA 80 feet, increase LNAV/VNAV all Cats visibility 1/4 mile, LNAV and Circling Cats C and D visibility 1/4 mile. Baro-VNAV and VDP NA when using Harrisburg Intl altimeter setting. Night landing: Rwy 13, 31 NA. For inoperative MALSRR increase LNAV/VNAV all Cats visibility to 1 1/2 mile, and LNAV Cats C/D visibility to 1 1/2 mile. For inoperative MALSRR when using Harrisburg Intl altimeter setting, increase LPV all Cats visibility to 7/8 mile, LNAV/VNAV all Cats visibility to 1 1/2 mile and LNAV Cats C/D visibility to 1 1/2 mile.

MALSRR

MISSED APPROACH:
Climb to 1200 then climbing left turn to 3000 direct KUPPS and hold.

ATIS 125.675	HARRISBURG APP CON 126.45 281.525	LANCASTER TOWER ★ 120.9 (CTAF) 251.1	GND CON 121.8	UNICOM 122.95
------------------------	---	---	-------------------------	-------------------------



ELEV 403 **D** TDZE 399

Diagram showing RWY 8 (4102 X 100) with a 0.3% up slope. Includes taxiway C1, RWY 13, and RWY 31. Navigation aids shown include TWR 476, MALSRR, and various frequency markers (REIL Rwy 31, HIRL Rwy 8-26, MIRL Rwy 13-31).

CATEGORY	A	B	C	D
LPV DA	599-1/2		200 (200-1/2)	
LNAV/VNAV DA	784-7/8		385 (400-7/8)	
LNAV MDA	800-1/2 401 (400-1/2)		800-3/4 401 (400-3/4)	
CIRCLING	940-1 537 (600-1)		960-1 1/2 1060-2 557 (600-1 1/2) 657 (700-2)	

NE-4, 02 DEC 2021 to 30 DEC 2021

NE-4, 02 DEC 2021 to 30 DEC 2021