

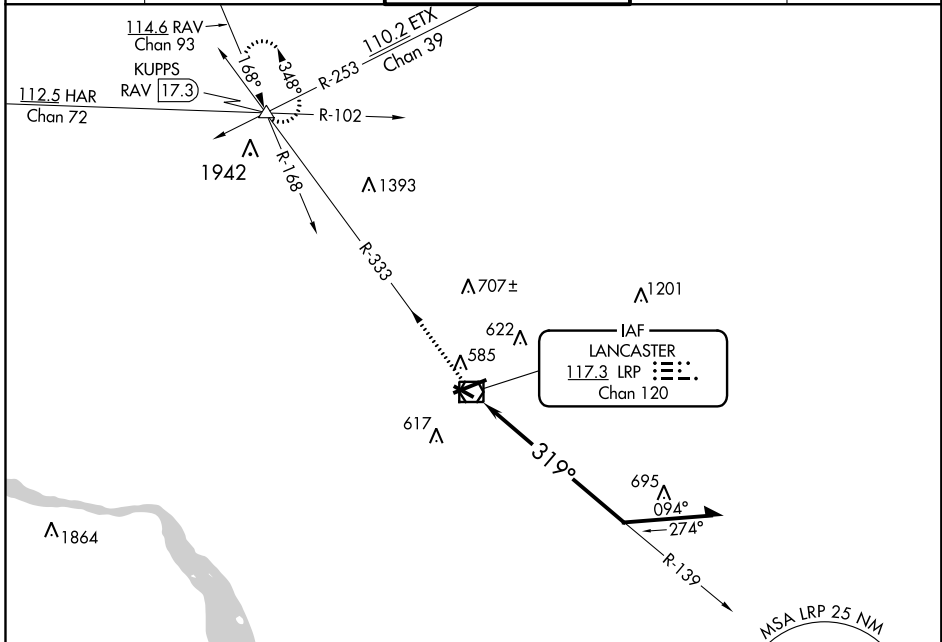
VOR/DME LRP 117.3 Chan 120	APP CRS 319°	Rwy Idg 4102 TDZE 403 Apt Elev 403
--	------------------------	---

VOR RWY 31

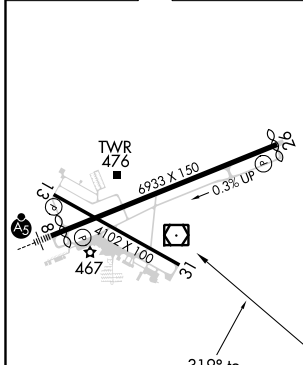
LANCASTER (LNS)

<p>⚠ Night landing: Rwy 13, 31 NA. ⚠ Helicopter visibility reduction below 1 SM NA.</p>	<p>MISSED APPROACH: Climb to 3000 via LRP VOR/DME R-333 to KUPPS INT/RAV 17.3 DME and hold.</p>
---	---

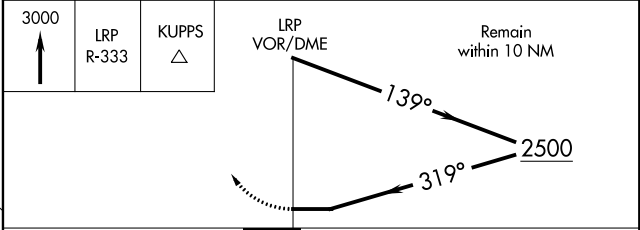
<p>ATIS 125.675</p>	<p>HARRISBURG APP CON 126.45 281.525</p>	<p>LANCASTER TOWER★ 120.9 (CTAF) 251.1</p>	<p>GND CON 121.8</p>	<p>UNICOM 122.95</p>
--------------------------------	---	--	---------------------------------	---------------------------------



ELEV 403	D	TDZE 403
----------	----------	----------



REIL Rwy 31 Ⓛ
HIRL Rwy 8-26 Ⓛ
MIRL Rwy 13-31 Ⓛ



CATEGORY	A	B	C	D
S-31	1060-1	657 (700-1)	1060-1¾ 657 (700-1¾)	1060-2 657 (700-2)
CIRCLING	1060-1	657 (700-1)	1060-1¾ 657 (700-1¾)	1080-2¼ 677 (700-2¼)

NE-4, 02 DEC 2021 to 30 DEC 2021

NE-4, 02 DEC 2021 to 30 DEC 2021