

VOR/DME LRP 117.3 Chan 120	APP CRS 319°	Rwy Idg 4102 TDZE 403 Apt Elev 403
-----------------------------------------	------------------------	---------------------------------------------------------------

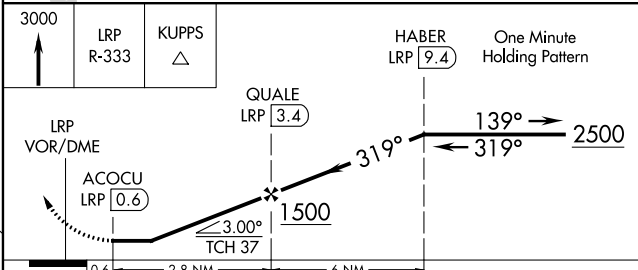
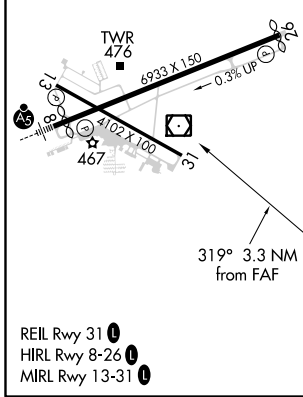
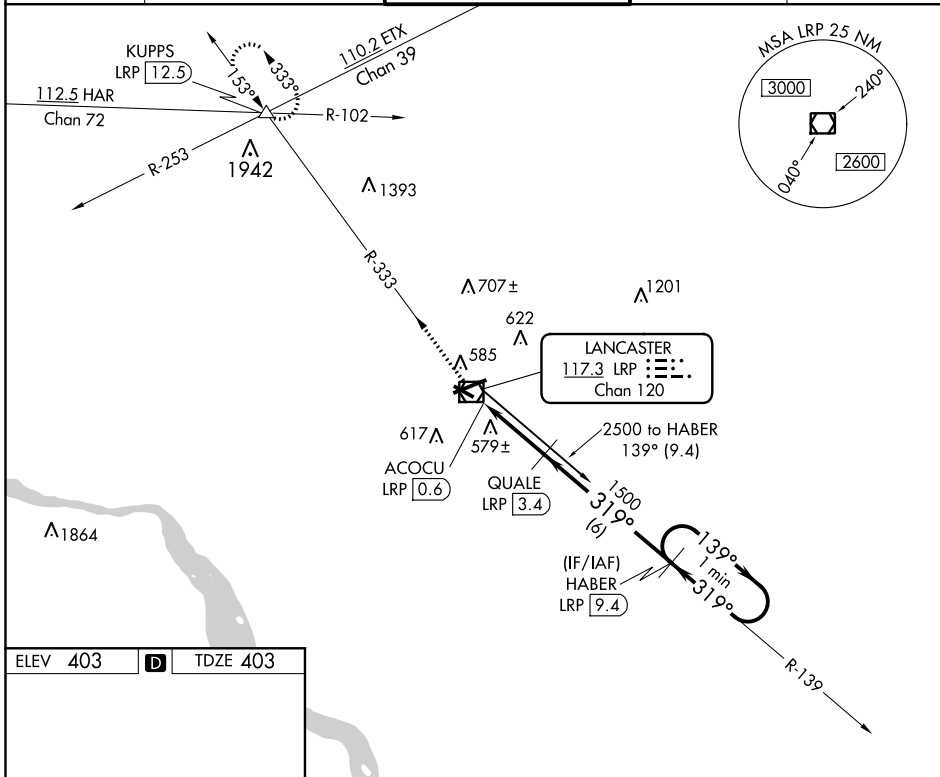
VOR/DME RWY 31

LANCASTER (LNS)

⚠ Night landing: Rwy 13, 31 NA. Helicopter visibility reduction below 1 SM NA.
⚠ When local altimeter setting not received, use Harrisburg Intl altimeter setting and increase all MDA 80 feet, increase Cat C/D visibility ¼ mile.

MISSED APPROACH: Climb to 3000 via LRP VOR/DME R-333 to KUPPS INT/LRP 12.5 DME and hold.

ATIS 125.675	HARRISBURG APP CON 126.45 281.525	LANCASTER TOWER★ 120.9 (CTAF) 251.1	GND CON 121.8	UNICOM 122.95
------------------------	---------------------------------------------	-----------------------------------------------	-------------------------	-------------------------



CATEGORY	A	B	C	D
S-31	840-1	437 (500-1)	840-1¼ 437 (500-1¼)	840-1½ 437 (500-1½)
CIRCLING	940-1	537 (600-1)	960-1½ 557 (600-1½)	1080-2¼ 677 (700-2¼)

NE-4, 02 DEC 2021 to 30 DEC 2021

NE-4, 02 DEC 2021 to 30 DEC 2021