

VOR/DME LRP <b>117.3</b> Chan <b>120</b>	APP CRS <b>090°</b>	Rwy Idg <b>6118</b> TDZE <b>399</b> Apt Elev <b>403</b>
--	------------------------	---

# VOR/DME RWY 8

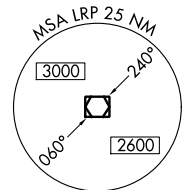
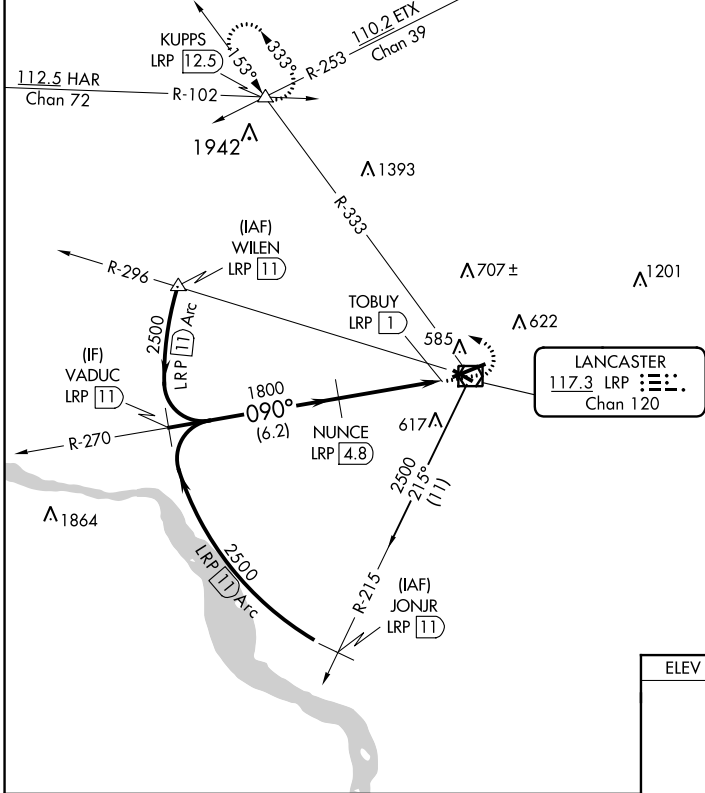
LANCASTER (LNS)

**⚠** Night landing: Rwy 13, 31 NA. Inop table does not apply.  
**⚠** When local altimeter setting not received, use Harrisburg Intl altimeter setting and increase all MDA 80 feet, and S-8 and Circling Cats C and D visibility ¼ mile.

MALSR

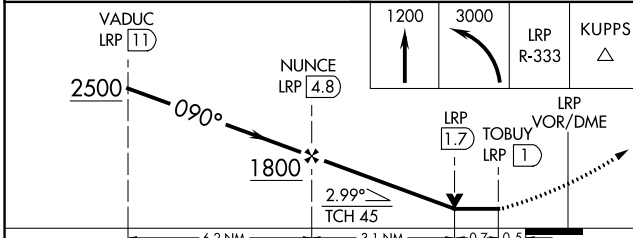
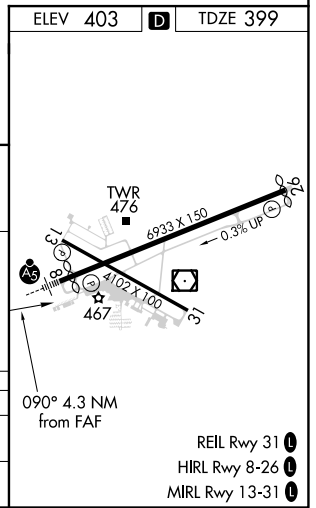
MISSED APPROACH: Climb to 1200 then climbing left turn to 3000 via LRP VOR/DME R-333 to KUPPS INT/LRP 12.5 DME and hold.

ATIS <b>125.675</b>	HARRISBURG APP CON <b>126.45 281.525</b>	<b>LANCASTER TOWER ★</b> <b>120.9 (CTAF) 251.1</b>	GND CON <b>121.8</b>	UNICOM <b>122.95</b>
------------------------	---	---	-------------------------	-------------------------



NE-4, 02 DEC 2021 to 30 DEC 2021

NE-4, 02 DEC 2021 to 30 DEC 2021



CATEGORY	A	B	C	D
S-8	820-1	421 (500-1)	820-1¼	421 (500-1¼)
CIRCLING	940-1	537 (600-1)	960-1½	1060-2
			557 (600-1½)	657 (700-2)