

LOC/DME I-CLL <b>110.55</b> Chan <b>42(Y)</b>	APP CRS <b>166°</b>	Rwy Idg TDZE Apt Elev	<b>7000</b> <b>321</b> <b>321</b>
---	------------------------	-----------------------------	---

# LOC BC RWY 17

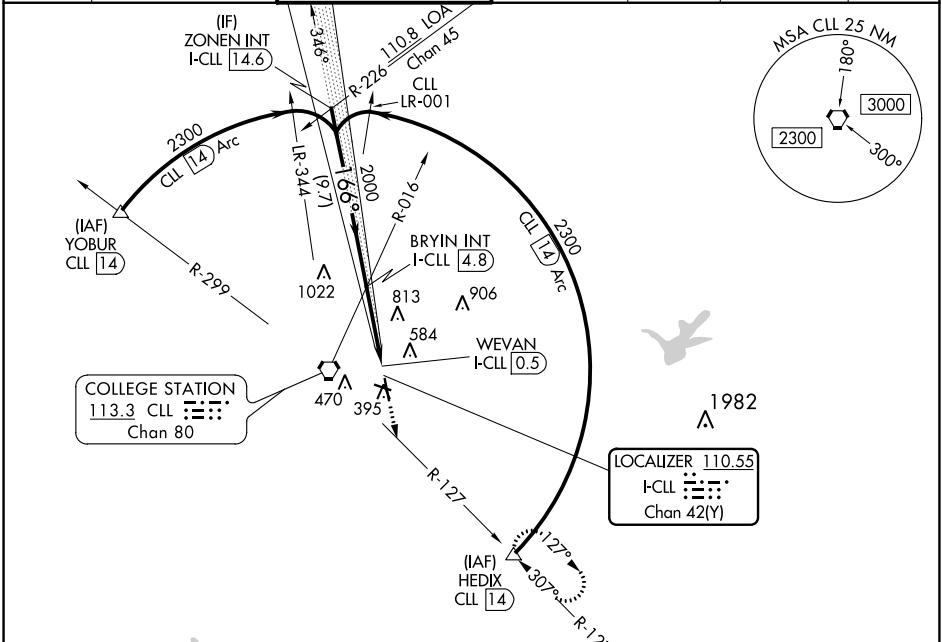
EASTERWOOD FLD (CLL)

DME required.

MISSED APPROACH: Climb to 2000 on heading 166° and CLL R-127 to HEDIX/CLL 14 DME and hold.

Rwy 17 helicopter visibility reduction below ¾ SM NA.

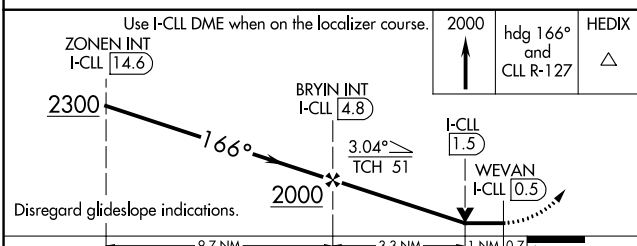
ATIS <b>126.85</b>	HOUSTON APP CON <b>134.3 360.85</b>	EASTERWOOD TOWER ★ <b>118.5 (CTAF) 284.7</b>	GND CON <b>128.7 284.7</b>	CLNC DEL <b>128.7</b>	CLNC DEL <b>120.4</b> (when twr closed)	UNICOM <b>122.95</b>
-----------------------	--	---	-------------------------------	--------------------------	---	-------------------------



SC-5, 02 DEC 2021 to 30 DEC 2021

SC-5, 02 DEC 2021 to 30 DEC 2021

## BACK COURSE



ELEV 321	<b>D</b> TDZE 321
----------	-------------------

Diagram of the tower and runways. RWY 17 is the primary runway. RWY 29 and RWY 35 are also shown. Tower (TWR) 388 is located near RWY 17. Dimensions for RWY 17 are 5158 x 130 feet. RWY 29 is 7000 x 146 feet. RWY 35 is 7000 x 146 feet.

REIL Rwy 29	MIRL Rwy 11-29 <b>L</b>
HIRL Rwy 17-35 <b>L</b>	
FAF to MAP 4.3 NM	
Knots	60 90 120 150 180
Min:Sec	4:18 2:52 2:09 1:43 1:26