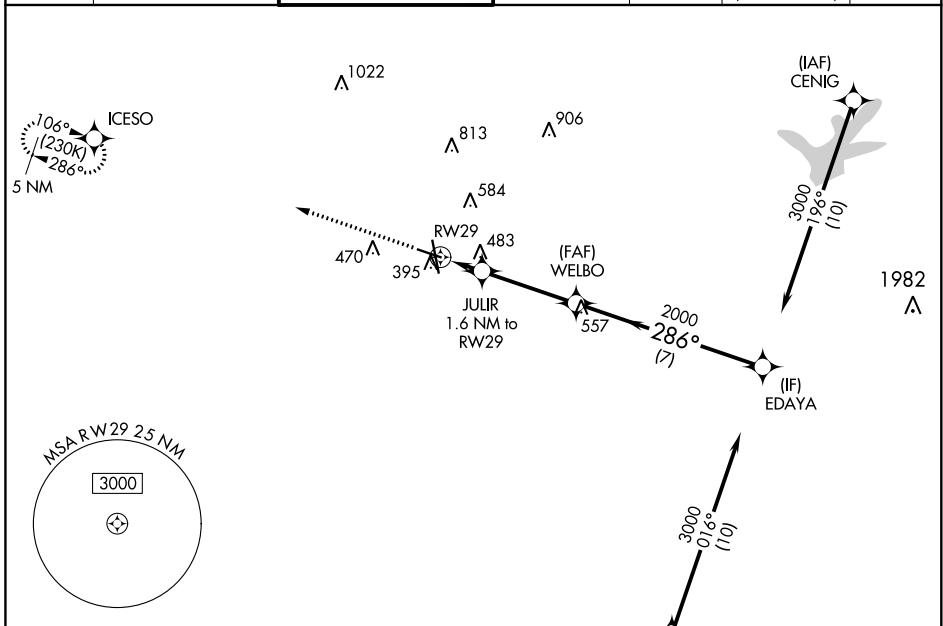


WAAS CH 87022 W29A	APP CRS 286°	Rwy Idg TDZE Apt Elev	5158 314 321
--	------------------------	-----------------------------	---

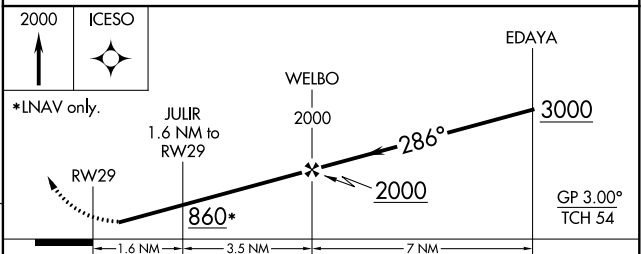
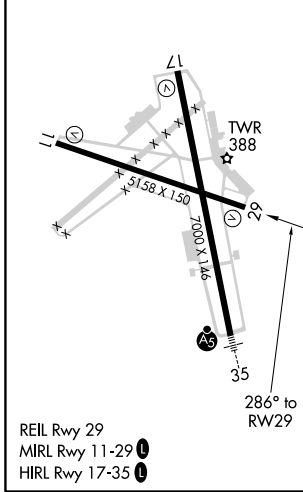
RNAV (GPS) RWY 29

EASTERWOOD FLD (CLL)

RNP APCH.		MISSED APPROACH: Climb to 2000 direct ICESO and hold.						
<p>▼ Baro-VNAV NA when using Caldwell altimeter setting. ▲ For uncompensated Baro-VNAV systems, LNAV/VNAV NA below -3°C or above 54°C. Rwy 29 helicopter visibility reduction below ¾ SM NA.</p>		ATIS 126.85	HOUSTON APP CON 134.3 360.85	EASTERWOOD TOWER ★ 118.5 (CTAF) 0 284.7	GND CON 128.7 284.7	CLNC DEL 128.7	CLNC DEL 120.4 (when twr closed)	UNICOM 122.95



ELEV 321	D	TDZE 314
----------	----------	----------



CATEGORY	A	B	C	D	E
LPV DA	564-¾		250 (300-¾)		
LNAV/VNAV DA	762-1⅓		448 (500-1⅓)		
LNAV MDA	740-1	426 (500-1)	740-1¼	426 (500-1¼)	
C CIRCLING	860-1 539 (600-1)	880-1 559 (600-1)	1000-2 679 (700-2)	1180-2¾ 859 (900-2¾)	1180-3 859 (900-3)

SC-5, 02 DEC 2021 to 30 DEC 2021

SC-5, 02 DEC 2021 to 30 DEC 2021