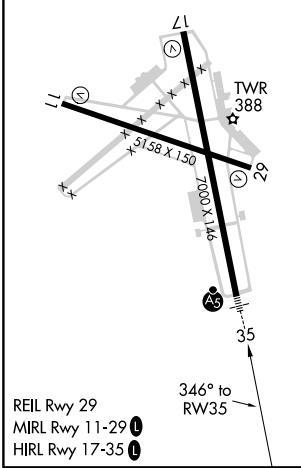
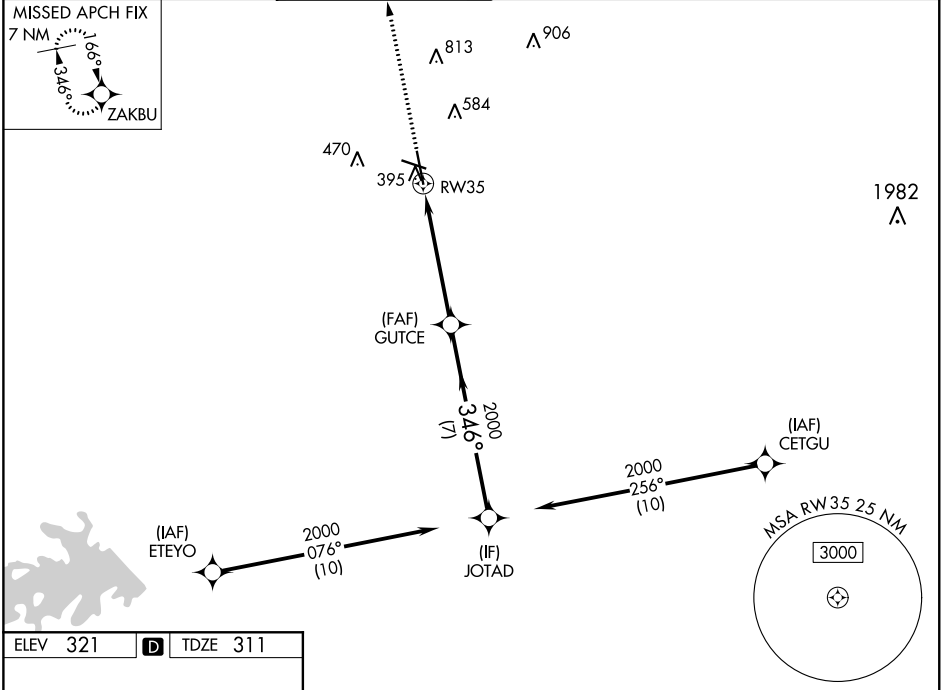


WAAS CH <b>63122</b> <b>W35A</b>	APP CRS <b>346°</b>	Rwy Idg TDZE Apt Elev	<b>7000</b> <b>311</b> <b>321</b>
--	------------------------	-----------------------------	---

# RNAV (GPS) RWY 35

EASTERWOOD FLD (CLL)

RNP APCH.		EASTERWOOD TOWER ★		GND CON	CLNC DEL	CLNC DEL	UNICOM
<p>▼ For uncompensated Baro-VNAV systems, LNAV/VNAV NA below -3°C or above 54°C. For inop ALS, increase LPV Cat E and LNAV/VNAV all Cats visibility to ¾ SM, increase LNAV Cat E visibility to 1¾ SM.</p>		<p><b>118.5 (CTAF) 0 284.7</b></p>		<p><b>128.7 284.7</b></p>	<p><b>128.7</b></p>	<p><b>120.4</b> (when twr closed)</p>	<p><b>122.95</b></p>



ELEV 321	<b>D</b>	TDZE 311			
2100	ZAKBU				
*LNAV only.					
1.3 NM	3.9 NM	7 NM			
RWY 35	GUTCE 2000	JOTAD 2000			
	346°	2000			
		GP 3.00° TCH 55			
CATEGORY	A	B	C	D	E
LPV DA	511-½		200 (200-½)		
LNAV/VNAV DA	563-½		252 (300-½)		
LNAV MDA	760-½	449 (500-½)	760-⅞		449 (500-⅞)
<b>C</b> CIRCLING	860-1 539 (600-1)	880-1 559 (600-1)	1000-2 679 (700-2)	1180-2¾ 859 (900-2¾)	1180-3 859 (900-3)

SC-5, 02 DEC 2021 to 30 DEC 2021

SC-5, 02 DEC 2021 to 30 DEC 2021