

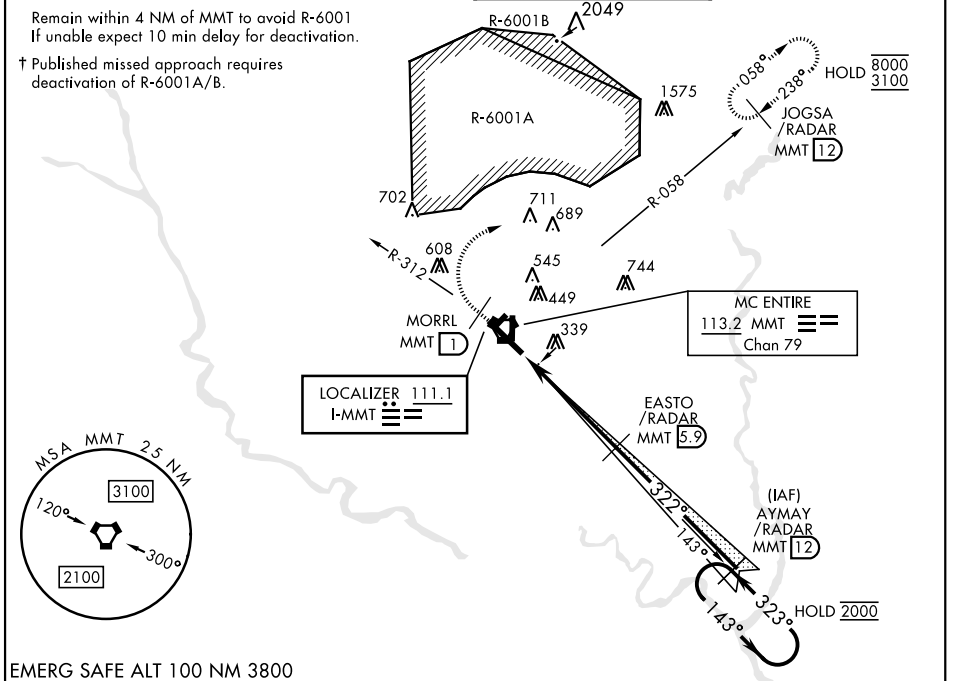
ILS or LOC/DME RWY 32

LOC I-MMT 111.1	APCH CRS 322°	Rwy Idg TDZE Arprt Elev 9009 243 254	AL-951 [USAF]	MC ENTIRE JNGB (KMMT)
---------------------------	-------------------------	--	---------------	-----------------------

▽ * When ALS inop, increase CAT ABCDE RVR to 40, and vis to $\frac{3}{4}$ mile.
 ** When ALS inop, increase CAT ABCDE RVR to 55, and vis to 1 mile.

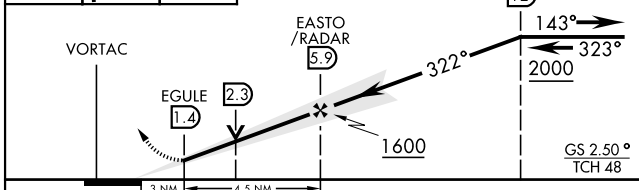
⬇ MISSED APPROACH: Climb to 1100 direct MORRL/ 1 DME then climbing right to 3100 intercept MMT R-058 direct JOGSA/12 DME and hold.

ATIS ★ 327.05	SHAW APP CON 125.4 318.1	TOWER ★ 132.4 (CTAF) 253.5	GND CON 127.625 226.675
-------------------------	------------------------------------	--------------------------------------	-----------------------------------

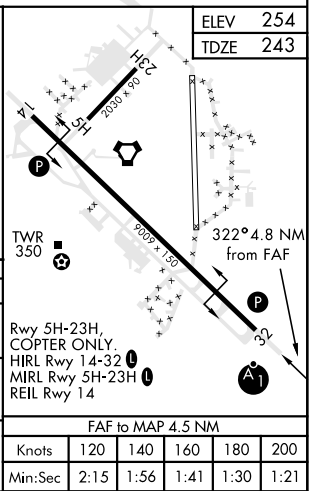


EMERG SAFE ALT 100 NM 3800

1100 MORRL (1 DME)	3100 MMT R-058	JOGSA/RADAR MMT (12 DME)	ELEV 254 TDZE 243
--------------------	----------------	--------------------------	----------------------



CATEGORY	A	B	C	D	E
S-ILS 32 *	443/24 200 (200-½)				
S-LOC 32 **	620/24 377 (400-½)	620/35 377 (400-¾)			
CIRCLING	740-1 486 (500-1)	840-1 586 (600-1)	880-1¾ 626 (700-1¾)	940-2¼ 686 (700-2¼)	1020-2¾ 766 (800-2¾)



ILS or LOC/DME RWY 32

SE-2, 02 DEC 2021 to 30 DEC 2021

SE-2, 02 DEC 2021 to 30 DEC 2021