

EASTOVER, SOUTH CAROLINA

# TACAN RWY 14

VORTAC MMT <b>113.2</b> Chan <b>79</b>	APCH CRS <b>132°</b>	Rwy Idg TDZE <b>251</b> Arprt Elev <b>254</b>
--	-------------------------	--

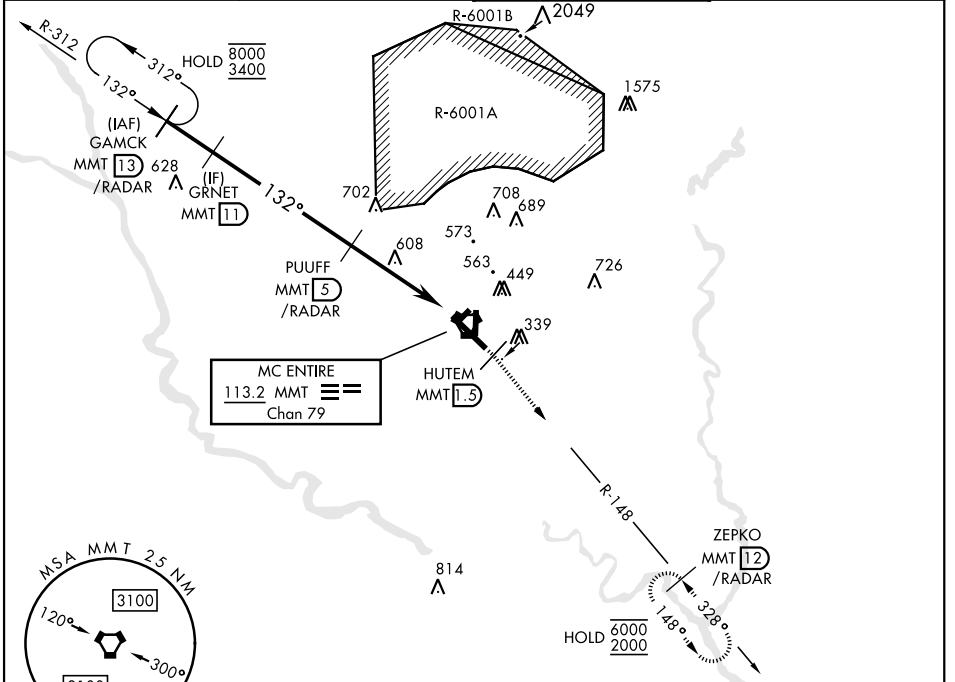
AL-951 [USAF]

MC ENTIRE JNGB (KMMT)

\* Circling to Rwy 05H-23H NA at night.

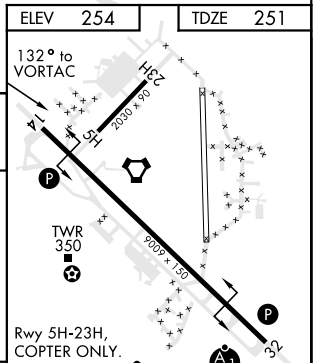
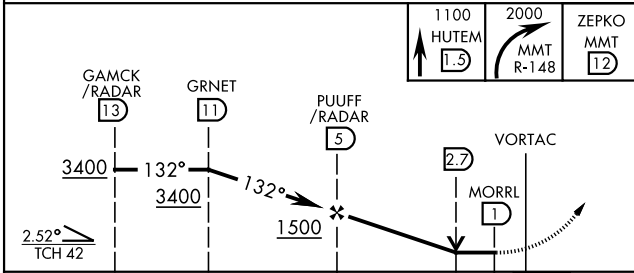
MISSED APPROACH: Climb to 1100 direct HUTEM/1.5 DME then climbing right turn to 2000 intercept MMT R-148 direct ZEPKO/12 DME and hold.

ATIS ★ <b>327.05</b>	SHAW APP CON <b>125.4 318.1</b>	TOWER ★ <b>132.4 (CTAF) 0 253.5</b>	GND CON <b>127.625 226.675</b>
-------------------------	------------------------------------	--	-----------------------------------



ELEV <b>254</b>	TDZE <b>251</b>
-----------------	-----------------

EMERG SAFE ALT 100 NM 3800



CATEGORY	A	B	C	D	E
S-14	880-1 629 (700-1)		880-1 629 (700-1 3/4)		
CIRCLING*	880-1 626 (700-1)		880-1 626 (700-1 3/4)	1020-2 1/2 766 (800-2 1/2)	1020-2 3/4 766 (800-2 3/4)

FAF to MAP 4.0 NM					
Knots	60	90	120	150	180
Min:Sec	4:00	2:40	2:00	1:36	1:20

EASTOVER, SOUTH CAROLINA  
Amdt 1 25MAY17

33°55'N-80°48'W

MC ENTIRE JNGB (KMMT)

# TACAN RWY 14

SE-2, 02 DEC 2021 to 30 DEC 2021