

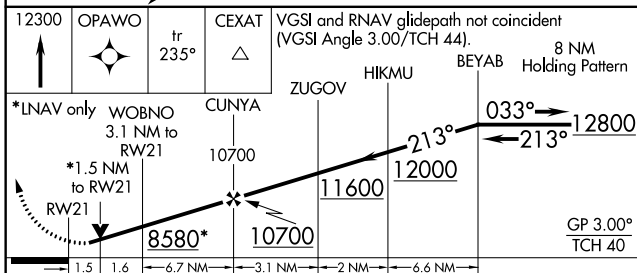
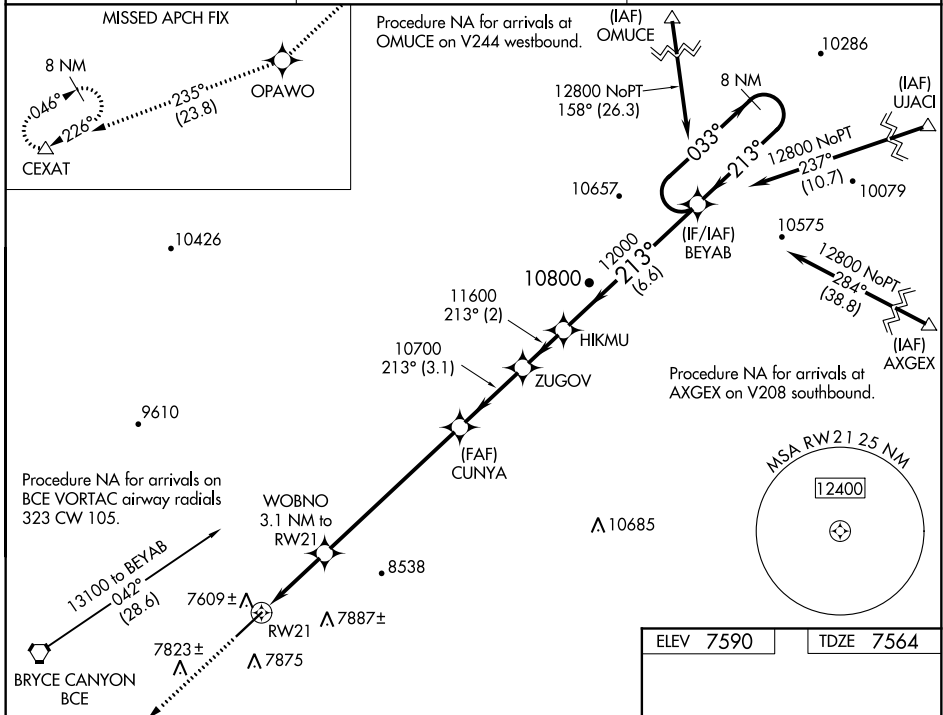
WAAS CH <b>99516</b> <b>W21A</b>	APP CRS <b>213°</b>	Rwy Idg TDZE Apt Elev	<b>7394</b> <b>7564</b> <b>7590</b>
--	------------------------	-----------------------------	---

# RNAV (GPS) RWY 21

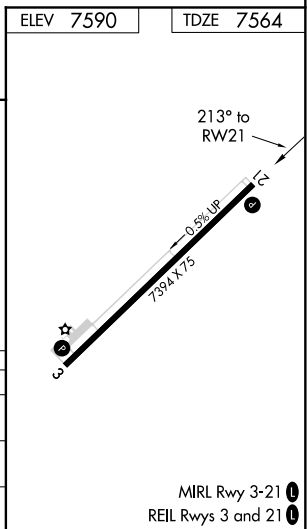
BRYCE CANYON (BCE)

RNP APCH. ▼ For uncompensated Baro-VNAV systems, LNAV/VNAV NA below -30°C or above 54°C. When local altimeter setting not received, procedure NA. Rwy 21 helicopter visibility reduction below 3/4 SM NA.	MISSED APPROACH: Climb to 12300 direct OPAWO and on track 235° to CEXAT and hold.
--	---

ASOS <b>135.475</b>	SALT LAKE CITY CENTER <b>133.6 269.25</b>	UNICOM <b>122.80 (CTAF) 0</b>
------------------------	--	----------------------------------



CATEGORY	A	B	C	D
LPV DA	7889-1 1/8	325 (300-1 1/8)		NA
LNAV/VNAV DA	8016-1 1/2	452 (500-1 1/2)		NA
LNAV MDA	8040-1 476 (500-1)		8040-1 3/8 476 (500-1 3/8)	NA



SW-4, 02 DEC 2021 to 30 DEC 2021

SW-4, 02 DEC 2021 to 30 DEC 2021