

(FAKES4.FAKES) 17285

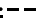
FAKES FOUR DEPARTURE

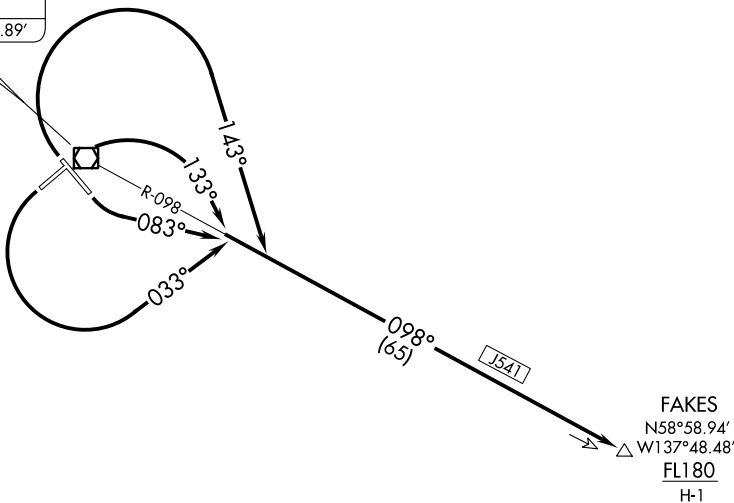
AL-1193 (FAA)

YAKUTAT (YAK)(PAYA)
YAKUTAT, ALASKA

ANCHORAGE CENTER
119.0 263.1
JUNEAU RADIO
123.6 (CTAF)

**TOP ALTITUDE:
ASSIGNED BY ATC**

YAKUTAT
113.3 YAK 
Chan 80
N59°30.65'-W139°38.89'



TAKEOFF MINIMUMS

Rwys 2, 11, 20, 29: Standard with minimum climb
of 280' per NM to FL180.

NOTE: Chart not to scale.



DEPARTURE ROUTE DESCRIPTION

TAKEOFF RUNWAY 2: Climbing right turn on heading 143°, thence. . . .

TAKEOFF RUNWAY 11: Climbing left turn on heading 083°, thence. . . .

TAKEOFF RUNWAY 20: Climbing left turn on heading 033°, thence. . . .

TAKEOFF RUNWAY 29: Climbing right turn on heading 143°, thence. . . .

. . . . intercept YAK VOR/DME R-098 to FAKES. Cross FAKES at or above
FL180 for assigned route of flight.

FAKES FOUR DEPARTURE

(FAKES4.FAKES) 21JUL16

YAKUTAT, ALASKA
YAKUTAT (YAK)(PAYA)

AK, 02 DEC 2021 to 27 JAN 2022

AK, 02 DEC 2021 to 27 JAN 2022