

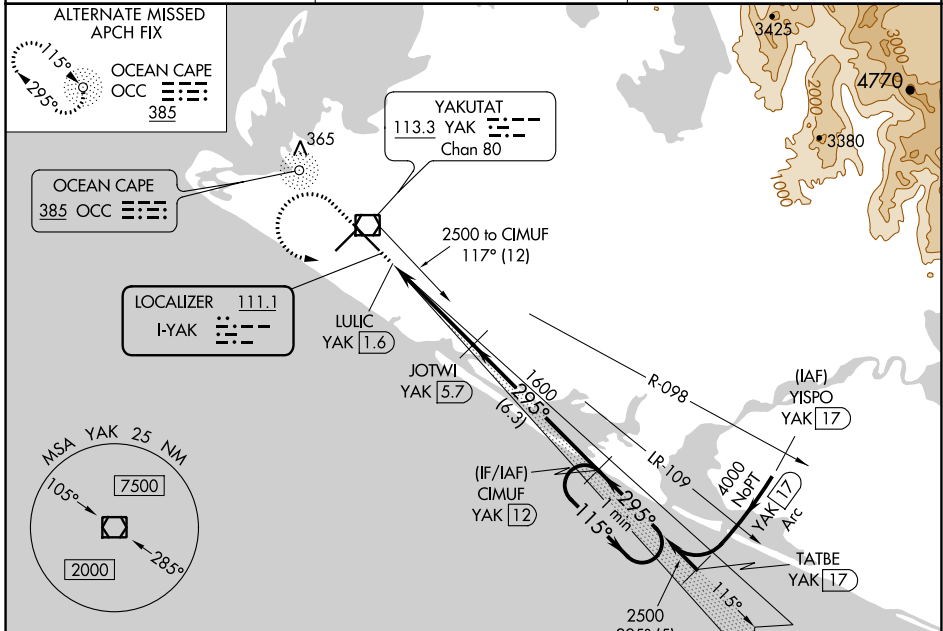
LOC I-YAK 111.1	APP CRS 295°	Rwy Idg 7732 TDZE 26 Apt Elev 33
---------------------------	------------------------	---

LOC/DME BC RWY 29

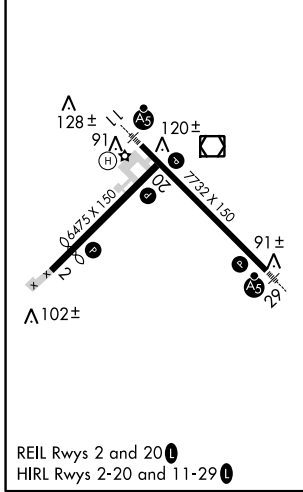
YAKUTAT (YAK) (PAYA)

<p>⚠ DME from YAK VOR/DME. Simultaneous reception of I-YAK and YAK DME required. Inop table does not apply to S-29 Cats A, B. For inop MALSRS, increase S-29 Cat C/D visibility to 1 3/8 mile.</p>	<p>MALSRS</p>	<p>MISSED APPROACH: Climb to 2000 then climbing left turn to 2500 to intercept YAK VOR/DME R-117 to CIMUF/YAK 12 DME and hold.</p>
---	---------------	--

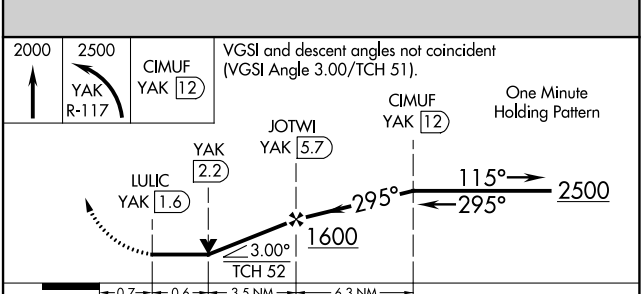
ASOS 135.75	ANCHORAGE CENTER 119.0 263.1	JUNEAU RADIO 123.6 (CTAF) 0
-----------------------	--	---------------------------------------



ELEV 33	D	TDZE 26
---------	----------	---------



BACK COURSE



CATEGORY	A	B	C	D
S-29	480-1 454 (500-1)			
C CIRCLING	500-1 467 (500-1)	520-1 487 (500-1)	620-1 1/2 587 (600-1 1/2)	720-2 1/4 687 (700-2 1/4)

AK, 02 DEC 2021 to 27 JAN 2022

AK, 02 DEC 2021 to 27 JAN 2022