

WAAS CH 78414 W02A	APP CRS 025°	Rwy ldg TDZE Apt Elev	5087 25 33
---------------------------------	------------------------	-----------------------------	---------------------------------------

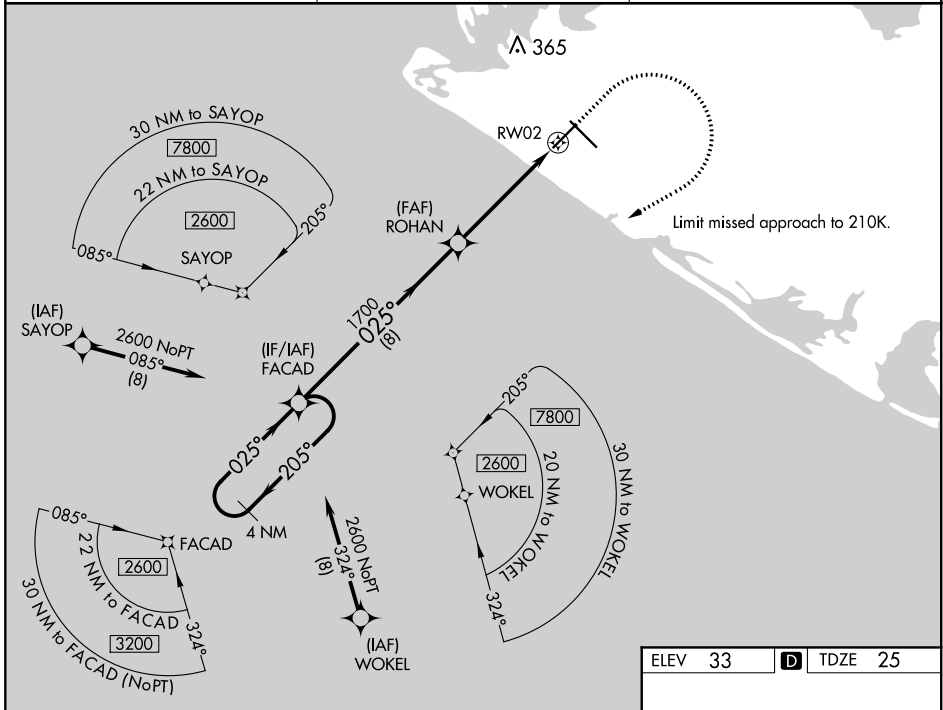
RNAV (GPS) RWY 2

YAKUTAT (YAK) (PAYA)

⚠ For uncompensated Baro-VNAV systems, LNAV/VNAV NA below -18°C (0°F) or above 54°C (130°F). DME/DME RNP-0.3 NA. Helicopter visibility reduction below ¾ SM NA.

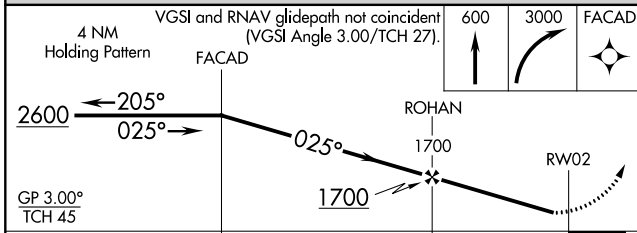
MISSED APPROACH: Climb to 600 then climbing right turn to 3000 direct FACAD and hold.

ASOS 135.75	ANCHORAGE CENTER 119.0 263.1	JUNEAU RADIO 123.6 (CTAF) ①
-----------------------	--	---------------------------------------



AK, 02 DEC 2021 to 27 JAN 2022

AK, 02 DEC 2021 to 27 JAN 2022



ELEV 33	D TDZE 25
---------	------------------

REIL Rwy 2 and 20 ①
HIRL Rwy 2-20 and 11-29 ①

CATEGORY	A	B	C	D
LPV DA	275-1 250 (300-1)			
LNAV/VNAV DA	515-1½ 490 (500-1½)			
LNAV MDA	460-1	435 (500-1)	460-1½	435 (500-1½)
C CIRCLING	500-1 467 (500-1)	520-1 487 (500-1)	620-1½ 587 (600-1½)	720-2¼ 687 (700-2¼)