

LOC/DME I-ADQ 110.9 Chan 46	APP CRS 258°	Rwy Idg 7534 TDZE 32 Apt Elev 79
---	------------------------	---

ILS Y or LOC Y RWY 26

KODIAK (ADQ)(PADQ)

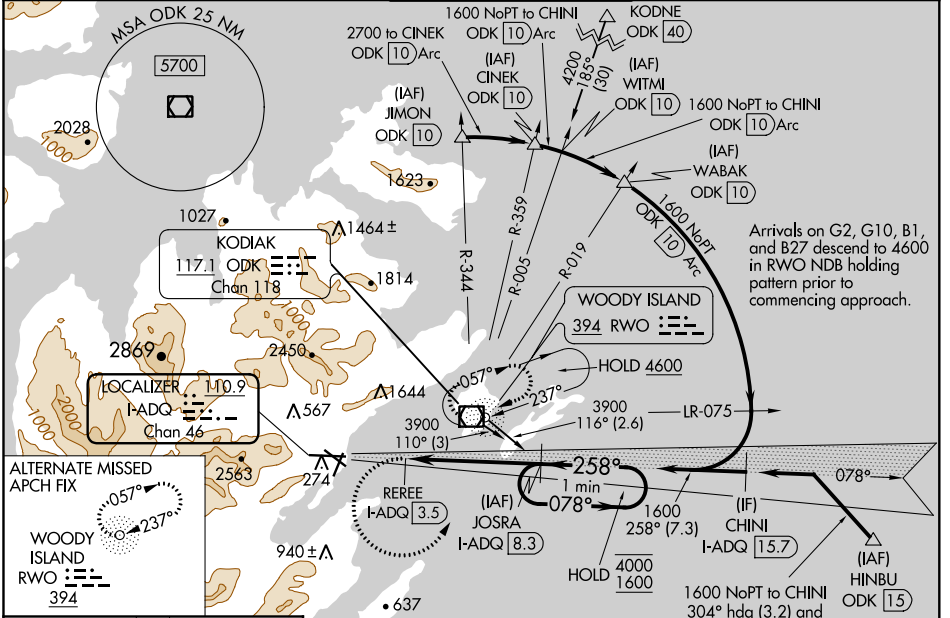
DME required.

V Circling NA north of Rwy 8-26 and west of Rwy 1-19. Circling Rwy 1 NA at night.

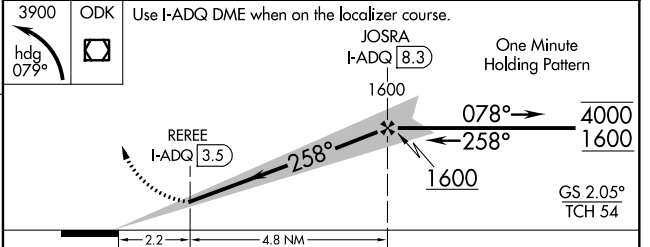
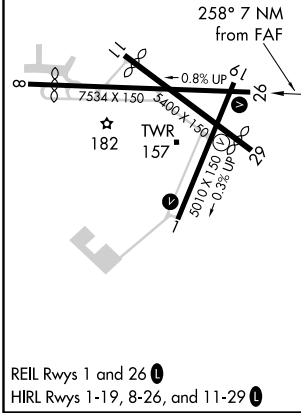
A Circling NA to Rwys 8, 11 and 19. Rapidly rising terrain north, west, and south of airport. ILS unusable from 2 DME inbound.

MISSED APPROACH: Climbing left turn to 3900 on heading 079° then direct ODK VOR/DME and hold.

ATIS 134.45	ANCHORAGE CENTER 125.1 281.4	KODIAK TOWER* 119.8 (CTAF) 239.0	GND CON 121.9	UNICOM 122.8
-----------------------	--	--	-------------------------	------------------------



ELEV 79	D	TDZE 32
---------	----------	---------



CATEGORY	A	B	C	D
S-ILS 26	636-3	604 (600-3)		818-3 786 (800-3)
S-LOC 26	640-2½	608 (600-2½)		1060-3 1028 (1000-3)
C CIRCLING	660-2½ 581 (600-2½)	720-2½ 641 (700-2½)	1140-3 1061 (1100-3)	NA

AK, 02 DEC 2021 to 27 JAN 2022

AK, 02 DEC 2021 to 27 JAN 2022