

APCH CRS 354°	Rwy Idg 12,351
	TDZE 911
	Arpt Elev 911

AL-5010 (USAF)

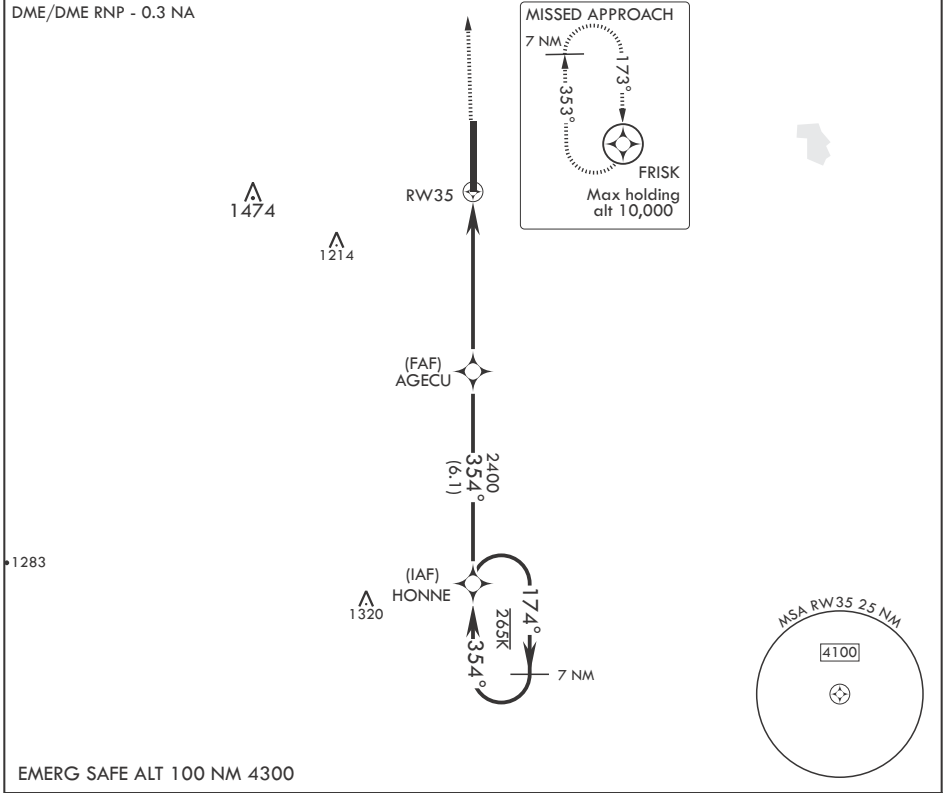
GRAND FORKS AFB (KRDR)

* When ALS inop, increase CAT AB RVR to 55 and vis to 1 mile,
CAT CDE vis to 1 3/8 miles.
** Circling E of Rwy 17-35 not authorized.



MISSED APPROACH: Climb to 3000 direct FRISK and hold.

ATIS 273.45	APP CON 118.1 318.1	RED RIVER TOWER 124.9 349.0	GND CON 119.15 275.8	CLNC DEL 119.15 360.7
----------------	------------------------	--------------------------------	-------------------------	--------------------------



		3000 	ELEV 911	TDZE 911	
CATEGORY	A	B	C	D	E
LNAV MDA*	1400/24	489 (500-1/2)	1400/50	489	(500-1)
CIRCLING**	1400-1	489 (500-1)	1400-1 1/2 489 (500-1 1/2)	1480-2 569 (600-2)	2040-3 1129 (1200-3)

NC-1, 02 DEC 2021 to 30 DEC 2021

NC-1, 02 DEC 2021 to 30 DEC 2021