

GRAND FORKS, NORTH DAKOTA

TACAN RWY 35

TACAN RDR Chan 111	APCH CRS 348°	Rwy ldg TDZE Arprt Elev	12,351 911 911
-----------------------	------------------	-------------------------------	----------------------

AL-5010 (USAF)

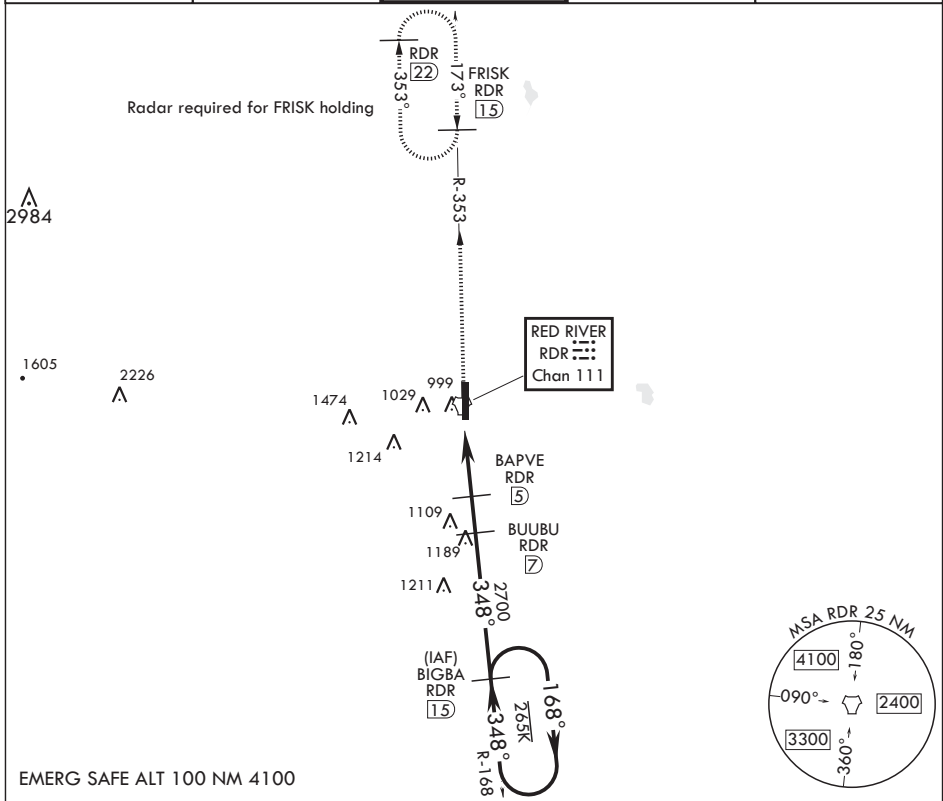
GRAND FORKS AFB (KRDR)

* When ALS inop, increase CAT AB RVR to 55 and vis to 1 mile,
CAT CDE RVR to 60 and vis to 1 1/8 miles.
** Circling E of Rwy 17-35 not authorized.

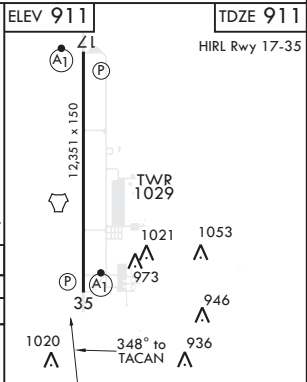
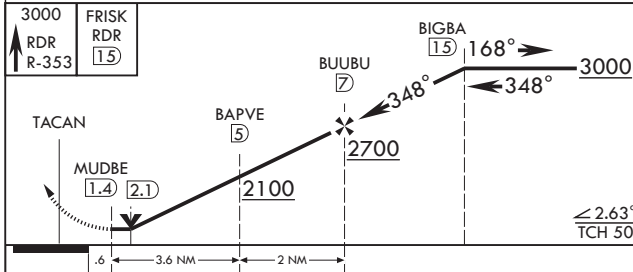


MISSED APPROACH: Climb to 3000 on RDR TACAN R-353 to FRISK and hold.

ATIS 273.45	APP CON 118.1 318.1	RED RIVER TOWER 124.9 349.0	GND CON 119.15 275.8	CLNC DEL 119.15 360.7
----------------	------------------------	--------------------------------	-------------------------	--------------------------



EMERG SAFE ALT 100 NM 4100



CATEGORY	A	B	C	D	E
S-35*	1320/24 409 (500-1/2)		1320/40 409 (500-3/4)		
CIRCLING**	1340-1 429 (500-1)	1380-1 469 (500-1)	1380-1 1/2 469 (500-1 1/2)	1480-2 569 (600-2)	2040-3 1129 (1200-3)

GRAND FORKS, NORTH DAKOTA

47°58'N - 97°24'W

GRAND FORKS AFB (KRDR)

Amdt 3 26APR18

TACAN RWY 35

NC-1, 02 DEC 2021 to 30 DEC 2021

NC-1, 02 DEC 2021 to 30 DEC 2021