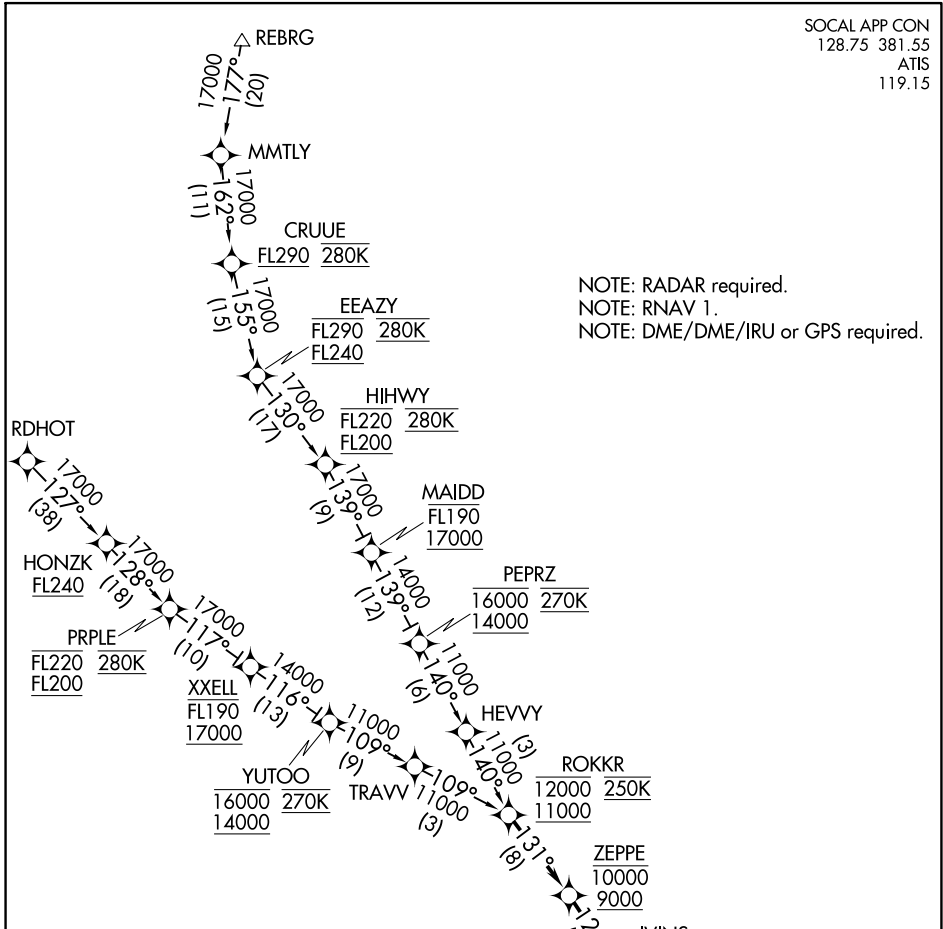


# BONJO TWO ARRIVAL (RNAV)

AL-5023 (FAA)

SANTA MONICA MUNI (SMO)  
SANTA MONICA, CALIFORNIA

SOCAL APP CON  
128.75 381.55  
ATIS  
119.15



### ARRIVAL ROUTE DESCRIPTION

- HIHWY TRANSITION (HIHWY.BONJO2)
- HONZK TRANSITION (HONZK.BONJO2)
- PRPLE TRANSITION (PRPLE.BONJO2)
- RDHOT TRANSITION (RDHOT.BONJO2)
- REBRG TRANSITION (REBRG.BONJO2)

From ROKKR on track 131° to cross ZEPPE between 9000 and 10000, then on track 129° to cross IVINS at or above 8000, then on track 113° to cross ROLLI at or above 6000, then on track 084° to cross BONJO at 5000, then on track 103°. Expect RADAR vectors to final approach course.

NOTE: Chart not to scale.

# BONJO TWO ARRIVAL (RNAV)

SW-3, 02 DEC 2021 to 30 DEC 2021

SW-3, 02 DEC 2021 to 30 DEC 2021