

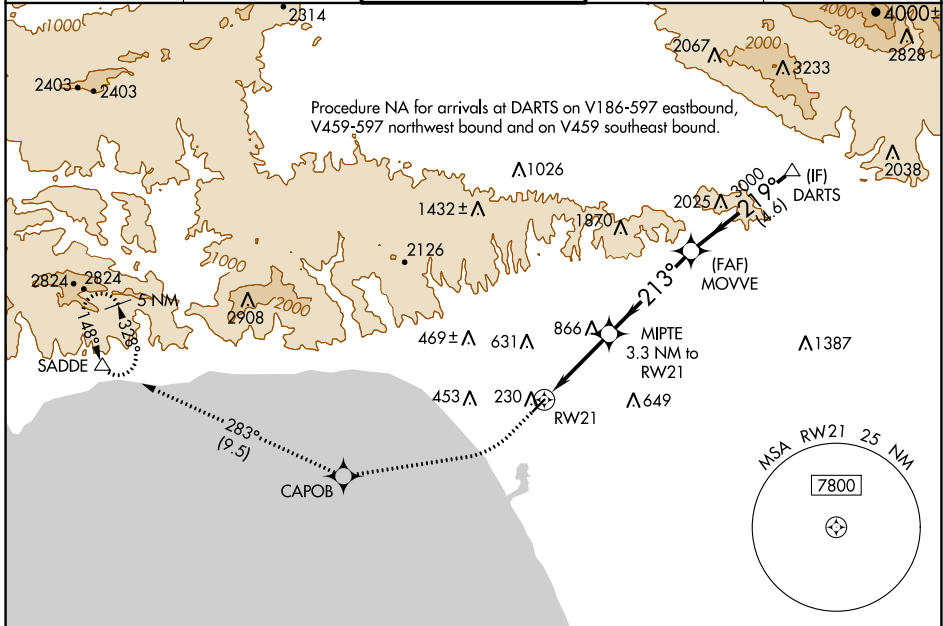
WAAS CH 90339 W21A	APP CRS 213°	Rwy ldg TDZE Apt Elev	3500 170 170
--	------------------------	-----------------------------	---

RNAV (GPS) RWY 21

SANTA MONICA MUNI (SMO)

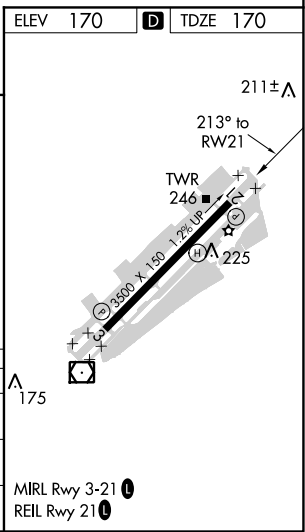
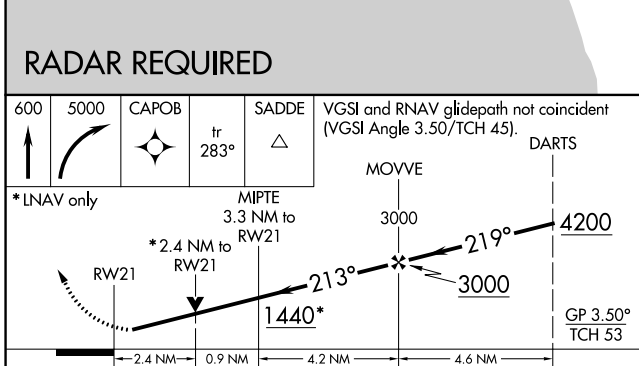
RNP APCH.	MISSED APPROACH: Climb to 600 then climbing right turn to 5000 direct CAPOB and on track 283° to SADDE and hold, continue climb-in-hold to 5000.
-----------	--

ATIS 119.15	SOCAL APP CON 128.5 235.975	SANTA MONICA TOWER* 120.1 (CTAF) 257.8	GND CON 121.9	UNICOM 122.95
-----------------------	---------------------------------------	---	-------------------------	-------------------------



SW-3, 02 DEC 2021 to 30 DEC 2021

SW-3, 02 DEC 2021 to 30 DEC 2021



CATEGORY	A	B	C	D
LPV DA		440-1	270 (300-1)	
RNAV/VNAV DA		685-1 3/8	515 (600-1 3/8)	
RNAV MDA	1120-1 1/4	950 (1000-1 1/4)	1120-2 1/2	950 (1000-2 1/2)