

ILS or LOC RWY 13

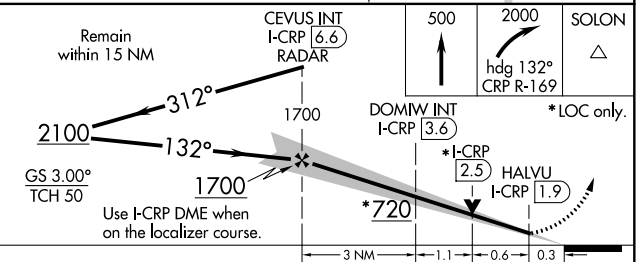
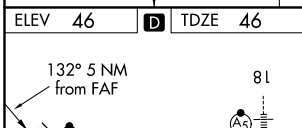
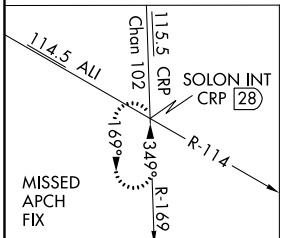
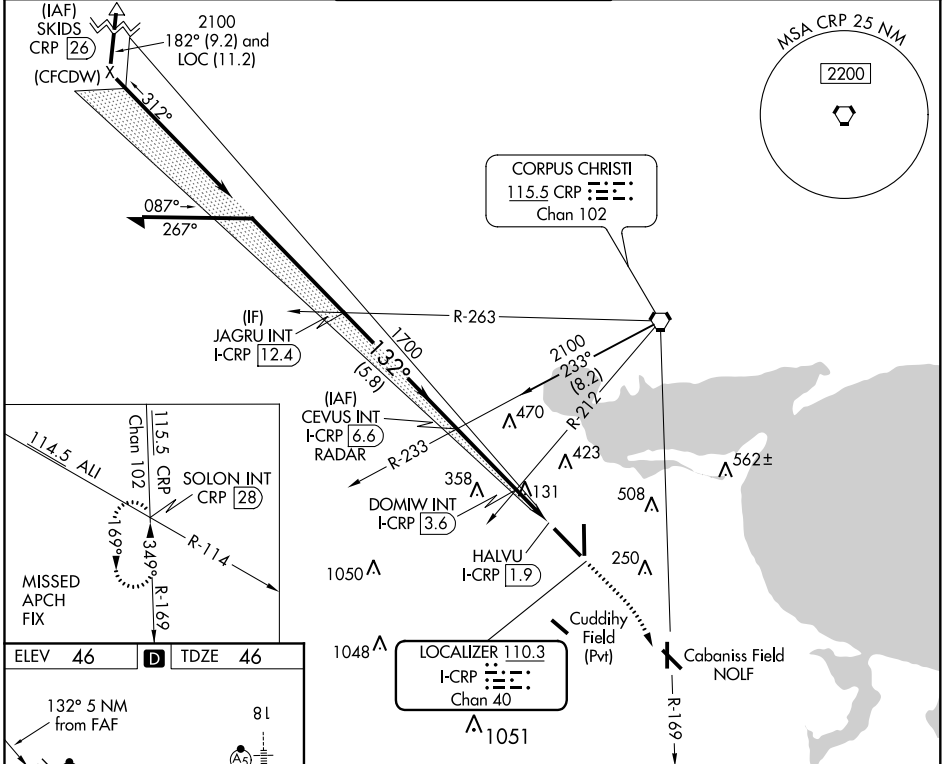
CORPUS CHRISTI INTL (CRP)

LOC/DME I-CRP 110.3 Chan 40	APP CRS 132°	Rwy Idg 7510 TDZE 46 Apt Elev 46
---	------------------------	---

▼ For inop MALSR, increase S-ILS 13 Cat E visibility to RVR 4000 and S-LOC 13 Cats C/D/E visibility to RVR 5500.
▲ #RVR 1800 authorized with use of FD or AP or HUD to DA.

MALSR
MISSED APPROACH: Climb to 500 then climbing right turn to 2000 on heading 132° and CRP VORTAC R-169 to SOLON INT/CRP VORTAC 28 DME and hold.

ATIS 126.8	CORPUS APP CON 120.9 348.725	CORPUS TOWER 119.4 257.8	GND CON 121.9 269.15	CLNC DEL 118.55
----------------------	--	------------------------------------	--------------------------------	---------------------------



CATEGORY	A	B	C	D	E
S-ILS 13#	246/24 200 (200-½)				
S-LOC 13	400/24	354 (400-½)	400/30 354 (400-¾)		
C CIRCLING	500-1 454 (500-1)	580-1 534 (600-1)	820-2¼ 774 (800-2¼)	820-2½ 774 (800-2½)	820-2¾ 774 (800-2¾)

SC-3, 02 DEC 2021 to 30 DEC 2021

SC-3, 02 DEC 2021 to 30 DEC 2021