


LOC/DME I-EKI <b>110.3</b> Chan 40	APP CRS <b>312°</b>	Rwy Idg TDZE Apt Elev	<b>7510</b> <b>43</b> <b>46</b>
--	------------------------	-----------------------------	---------------------------------------

# LOC RWY 31

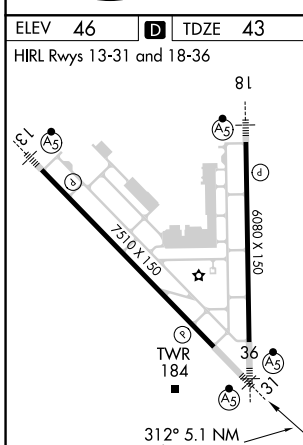
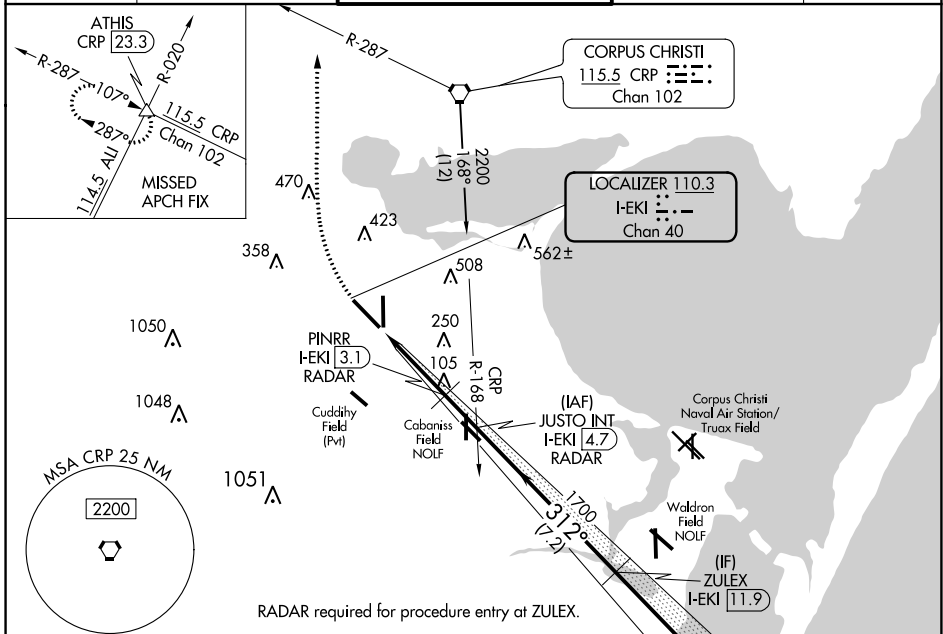
CORPUS CHRISTI INTL (CRP)

**⚠** DME or RADAR required. For inop MALS/R, increase S-LOC 31 Cats C/D/E visibility to 1 mile.

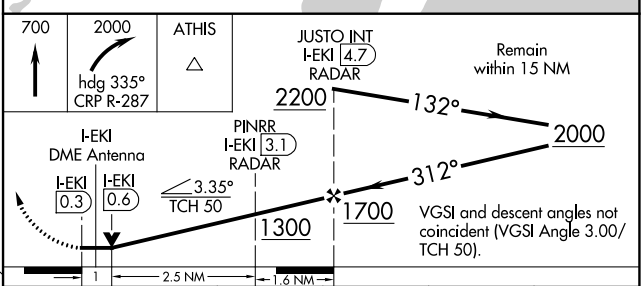
**MALS/R** 

**MISSED APPROACH:** Climb to 700 then climbing right turn to 2000 on heading 335° and CRP VORTAC R-287 to ATHIS INT/CRP VORTAC 23.3 DME and hold.

ATIS <b>126.8</b>	CORPUS APP CON <b>120.9 348.725</b>	CORPUS TOWER <b>119.4 257.8</b>	GND CON <b>121.9 269.15</b>	CLNC DEL <b>118.55</b>
----------------------	--	------------------------------------	--------------------------------	---------------------------



ELEV 46	<b>D</b>	TDZE 43			
HIRL Rwy 13-31 and 18-36					
FAF to MAP 5.1 NM					
Knots	60	90	120	150	180
Min:Sec	5:06	3:24	2:33	2:02	1:42



CATEGORY	A	B	C	D	E
S-LOC 31	400-1/2	357 (400-1/2)	400-5/8	357 (400-5/8)	
<b>C</b> CIRCLING	500-1 454 (500-1)	580-1 534 (600-1)	820-2 1/4 774 (800-2 1/4)	820-2 1/2 774 (800-2 1/2)	820-2 3/4 774 (800-2 3/4)

SC-3, 02 DEC 2021 to 30 DEC 2021

SC-3, 02 DEC 2021 to 30 DEC 2021