


WAAS CH 53635 W18A	APP CRS 175°	Rwy Idg 6080 TDZE 42 Apt Elev 46
--	------------------------	---

RNAV (GPS) RWY 18

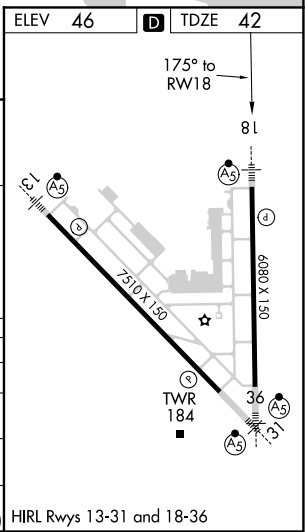
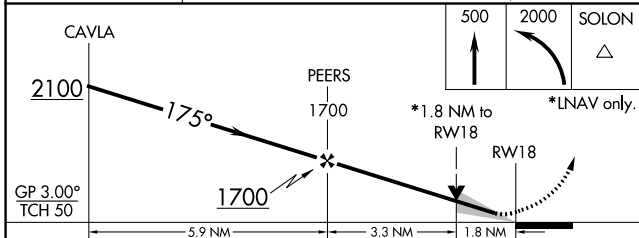
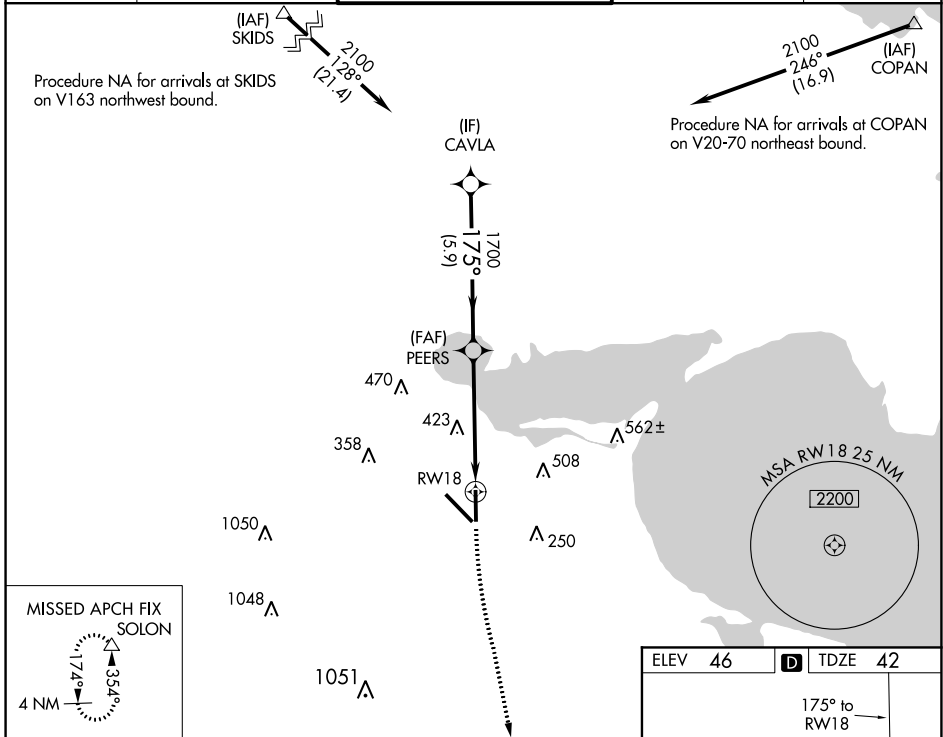
CORPUS CHRISTI INTL (CRP)

⚠ For uncompensated Baro-VNAV systems, LNAV/VNAV NA below 1°C (34°F) or above 54°C (130°F). DME/DME RNP-0.3 NA.
 For inop MALSRL increase LPV Cat E visibility to ¾ mile, LNAV/VNAV Cat E visibility to 1 mile and LNAV Cat C/D/E visibility to 1¼ mile.

MALSRL


MISSED APPROACH: Climb to 500 then climbing left turn to 2000 direct SOLON and hold.

ATIS 126.8	CORPUS APP CON 120.9 348.725	CORPUS TOWER 119.4 257.8	GND CON 121.9 269.15	CLNC DEL 118.55
----------------------	--	------------------------------------	--------------------------------	---------------------------



CATEGORY	A	B	C	D	E
LPV DA		242-½	200 (200-½)		
LNAV/VNAV DA		345-½	303 (300-½)		
LNAV MDA	660-½	618 (700-½)	660-1⅜	618 (700-1⅜)	
C CIRCLING	660-1	614 (700-1)	820-2¼ 774 (800-2¼)	820-2½ 774 (800-2½)	820-2¾ 774 (800-2¾)

SC-3, 02 DEC 2021 to 30 DEC 2021

SC-3, 02 DEC 2021 to 30 DEC 2021