

RNAV (RNP) Z RWY 13

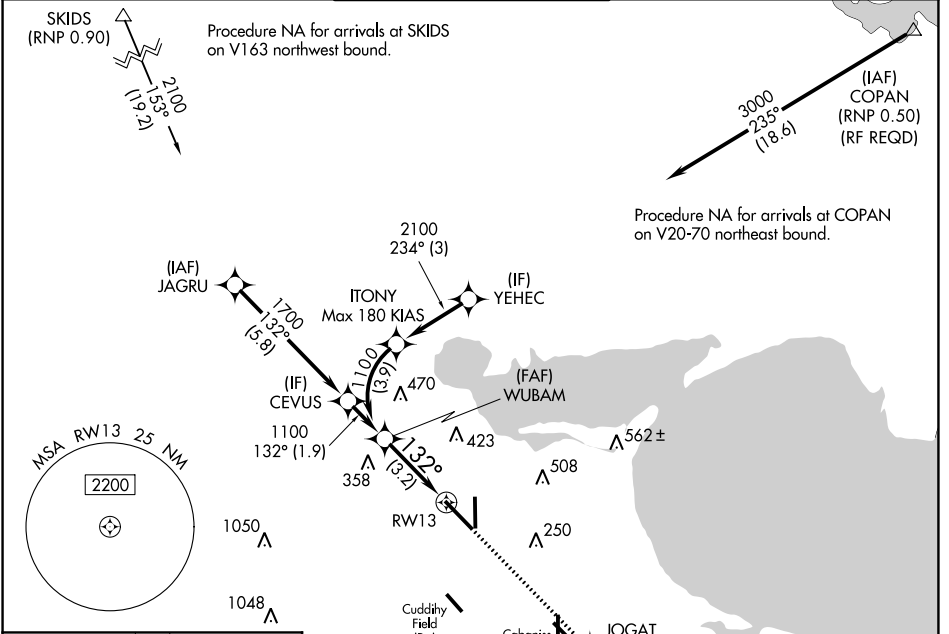
CORPUS CHRISTI INTL (CRP)

APP CRS 132°	Rwy Idg TDZE Apt Elev	7510 46 46
------------------------	-----------------------------	---------------------------------------

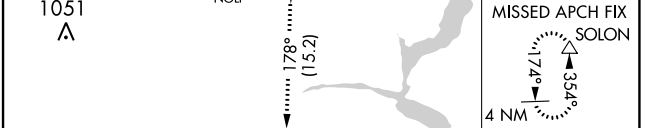
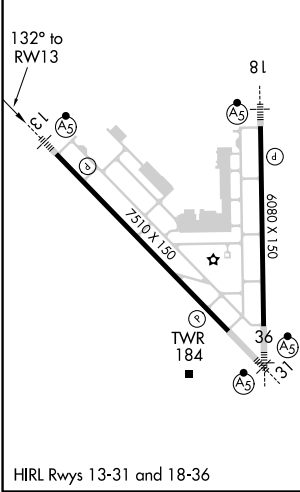
▼ For uncompensated Baro-VNAV systems, procedure NA below -1°C (31°F) or above 54°C (130°F). GPS required.

MALSR
 MISSED APPROACH: Climb to 2000 on track 132° to JOGAT and on track 178° to SOLON and hold.

ATIS 126.8	CORPUS APP CON 120.9 348.725	CORPUS TOWER 119.4 257.8	GND CON 121.9 269.15	CLNC DEL 118.55
----------------------	--	------------------------------------	--------------------------------	---------------------------



ELEV 46	D	TDZE 46
---------	----------	---------



WUBAM 1100	1100	GP 3.00°	TCH 50
RW13	132°	3.2 NM	
CATEGORY	A	B	C
RNP 0.30 DA	394/30	348 (400-5%)	

AUTHORIZATION REQUIRED

SC-3, 02 DEC 2021 to 30 DEC 2021

SC-3, 02 DEC 2021 to 30 DEC 2021