


WAAS CH 97515 W13A	APP CRS 132°	Rwy Idg TDZE Apt Elev	7510 46 46
--	------------------------	-----------------------------	---------------------------------------

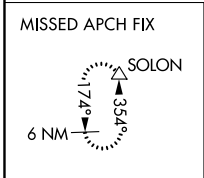
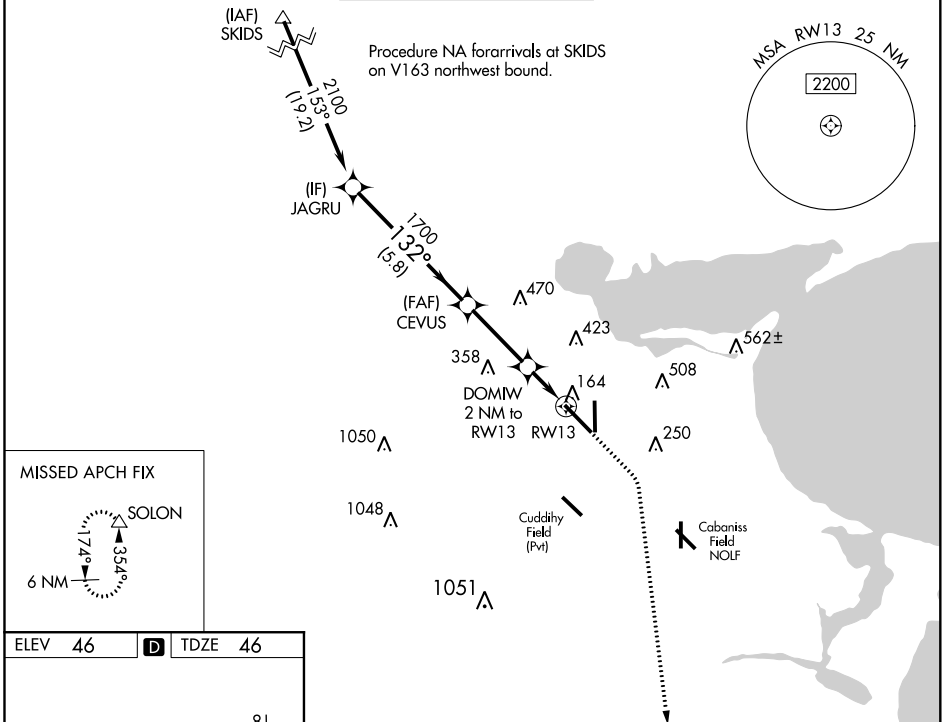
RNAV (GPS) Y RWY 13

CORPUS CHRISTI INTL (CRP)

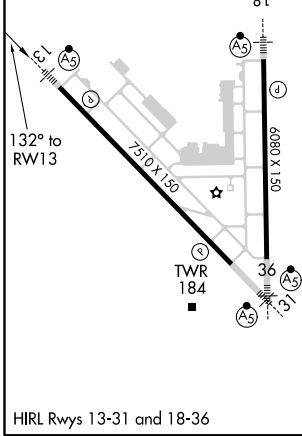
⚠ For uncompensated Baro-VNAV systems, LNAV/VNAV NA below -1°C (31°F) or above 54°C (130°F). DME/DME RNP-0.3 NA. For inop MALSRL increase LPV Cat E visibility to RVR 4000, LNAV/VNAV all Cats visibility to RVR 4500, and LNAV Cats C/D/E visibility to RVR 5500. **RVR 1800 authorized with use of FD or AP or HUD to DA.

MALSRL
 MISSED APPROACH: Climb to 500 then climbing right turn to 2000 direct SOLON and hold.

ATIS 126.8	CORPUS APP CON 120.9 348.725	CORPUS TOWER 119.4 257.8	GND CON 121.9 269.15	CLNC DEL 118.55
----------------------	--	------------------------------------	--------------------------------	---------------------------



ELEV 46	D	TDZE 46
---------	----------	---------



	JAGRU	CEVUS	DOMIW 2 NM to RWY 13	RWY 13	SOLON
	2100	1700	*720		
	132°				
	5.8 NM	3 NM	1 NM	1 NM	
GP 3.00° TCH 50					
CATEGORY	A	B	C	D	E
LPV DA**	246/24		200 (200-½)		
LNAV/VNAV DA	325/24		279 (300-½)		
LNAV MDA	420/24		420/35		374 (400-½)
C CIRCLING	500-1 454 (500-1)	580-1 534 (600-1)	820-2¼ 774 (800-2¼)	820-2½ 774 (800-2½)	820-2¾ 774 (800-2¾)

SC-3, 02 DEC 2021 to 30 DEC 2021

SC-3, 02 DEC 2021 to 30 DEC 2021