


WAAS CH 60914 W31A	APP CRS 312°	Rwy Idg 7510 TDZE 43 Apt Elev 46
--	------------------------	---

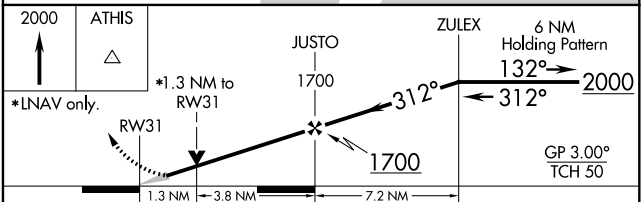
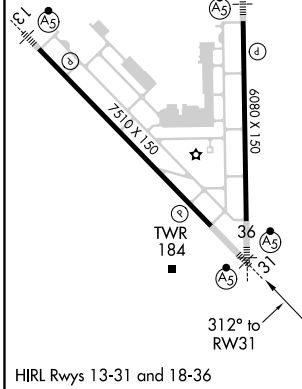
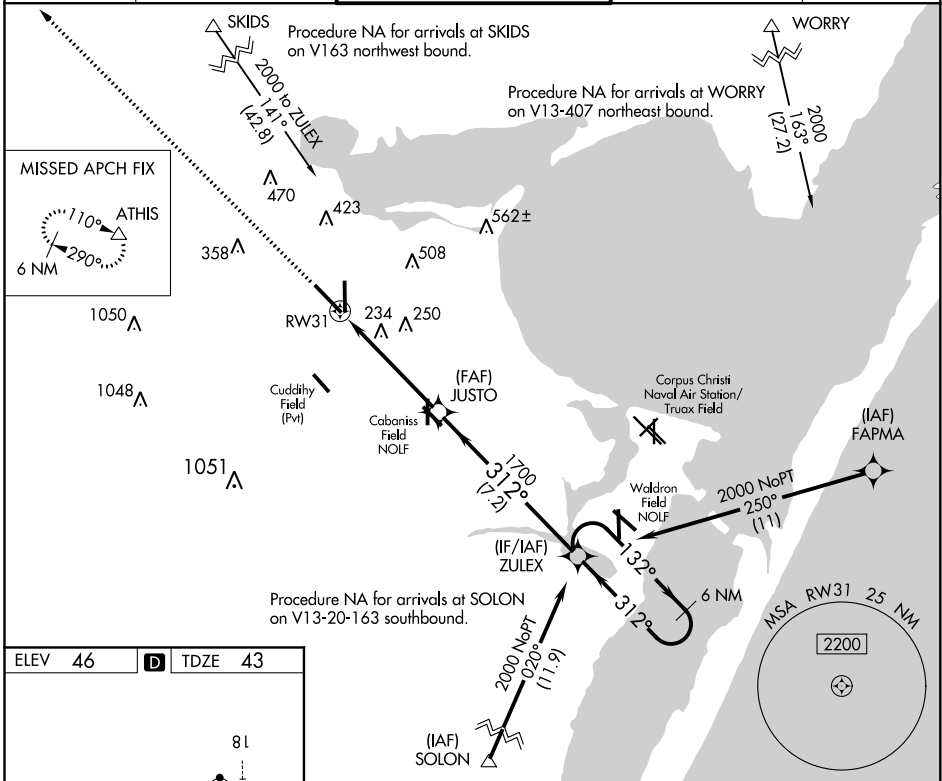
RNAV (GPS) Y RWY 31

CORPUS CHRISTI INTL (CRP)

Procedure NA when Cabaniss Field traffic patterns active. DME/DME RNP-0.3 NA. For uncompensated Baro-VNAV systems, LNAV/VNAV NA below -1°C (31°F) or above 54°C (130°F). For inop MALSR, increase LPV Cat E visibility to ¾ mile, LNAV/VNAV all Cats visibility to 1 mile, and LNAV Cat E visibility to 1 ½ mile.

MALSR  **MISSED APPROACH:** Climb to 2000 direct ATHIS and hold.

ATIS 126.8	CORPUS APP CON 120.9 348.725	CORPUS TOWER 119.4 257.8	GND CON 121.9 269.15	CLNC DEL 118.55
----------------------	--	------------------------------------	--------------------------------	---------------------------



CATEGORY	A	B	C	D	E
LPV DA		243-½	200 (200-½)		
LNAV/VNAV DA		356-⅝	313 (400-⅝)		
LNAV MDA	500-½	457 (500-½)	500-⅞ 457 (500-⅞)		
CIRCLING	500-1 454 (500-1)	580-1 534 (600-1)	820-2¼ 774 (800-2¼)	820-2½ 774 (800-2½)	820-2¾ 774 (800-2¾)

SC-3, 02 DEC 2021 to 30 DEC 2021

SC-3, 02 DEC 2021 to 30 DEC 2021