

VORTAC CRP 115.5	APP CRS 192°	Rwy Idg TDZE Apt Elev 6080 42 46
Chan 102		

VOR or TACAN RWY 18

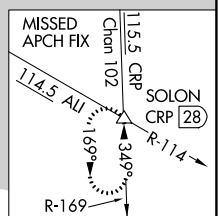
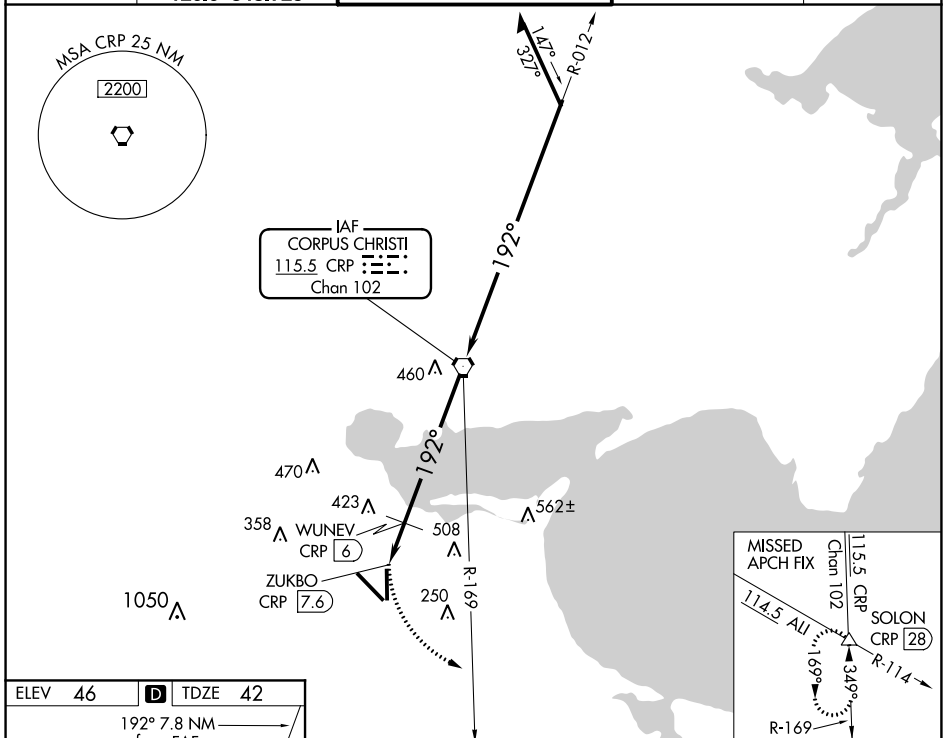
CORPUS CHRISTI INTL (CRP)

▼ Rwy 18 helicopter visibility reduction below $\frac{3}{4}$ SM NA.
▲ Inop table does not apply.

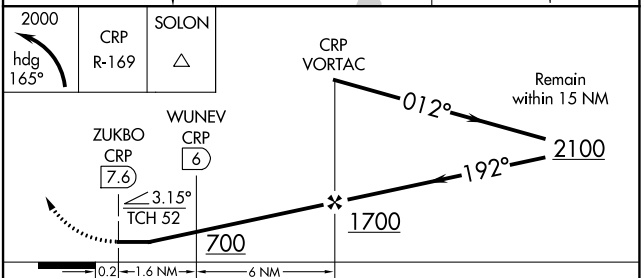
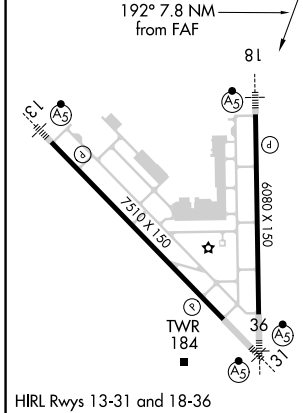


MISSED APPROACH: Climbing left turn to 2000 on heading 165° and on CRP VORTAC R-169 to SOLON INT/CRP 28 DME and hold.

ATIS 126.8	CORPUS APP CON 120.9 348.725	CORPUS TOWER 119.4 257.8	GND CON 121.9 269.15	CLNC DEL 118.55
----------------------	--	------------------------------------	--------------------------------	---------------------------



ELEV 46	D TDZE 42
---------	------------------



CATEGORY	A	B	C	D	E
S-18	700-1	658 (700-1)	700-1 $\frac{7}{8}$	658 (700-1 $\frac{7}{8}$)	
C CIRCLING	700-1	654 (700-1)	820-2 $\frac{1}{4}$ 774 (800-2 $\frac{1}{4}$)	820-2 $\frac{1}{2}$ 774 (800-2 $\frac{1}{2}$)	820-2 $\frac{3}{4}$ 774 (800-2 $\frac{3}{4}$)
WUNEV DME MINIMUMS					
S-18	600-1	558 (600-1)	600-1 $\frac{5}{8}$	558 (600-1 $\frac{5}{8}$)	
C CIRCLING	600-1	554 (600-1)	820-2 $\frac{1}{4}$ 774 (800-2 $\frac{1}{4}$)	820-2 $\frac{1}{2}$ 774 (800-2 $\frac{1}{2}$)	820-2 $\frac{3}{4}$ 774 (800-2 $\frac{3}{4}$)

FAF to MAP 7.6 NM					
Knots	60	90	120	150	180
Min:Sec	7:36	5:04	3:48	3:02	2:32

SC-3, 02 DEC 2021 to 30 DEC 2021

SC-3, 02 DEC 2021 to 30 DEC 2021