

WAAS CH <b>82116</b> <b>W07A</b>	APP CRS <b>072°</b>	Rwy Idg TDZE Apt Elev	<b>5503</b> <b>1817</b> <b>1817</b>
--	------------------------	-----------------------------	---

# RNAV (GPS) RWY 7

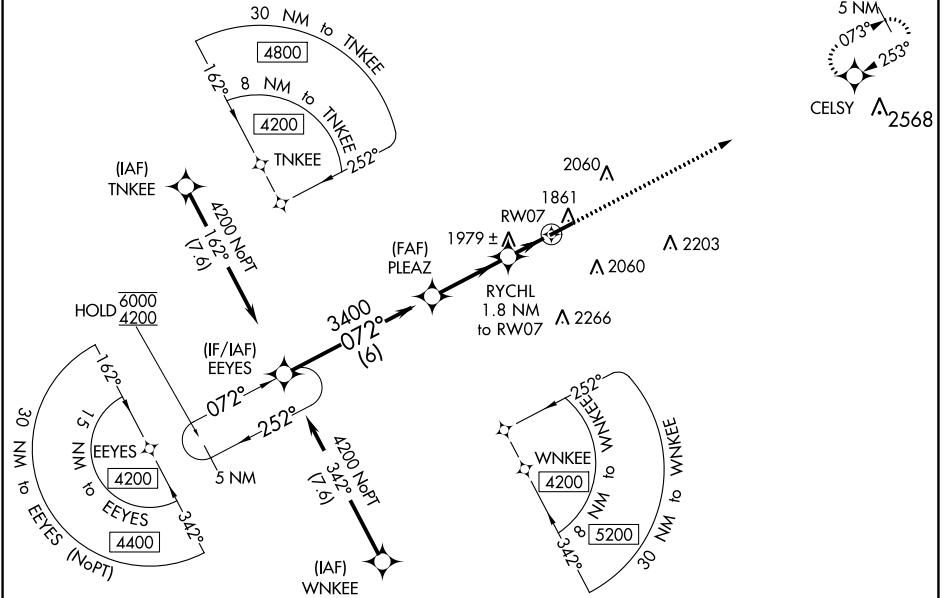
DUBOIS RGNL (DUJ)

RNP APCH.

**⚠** Circling NA for Cat D south of Rwy 7-25. For uncompensated Baro-VNAV systems, LNAV/VNAV NA below -21°C or above 54°C.

MISSED APPROACH: Climb to 4200 direct CELSY and hold.

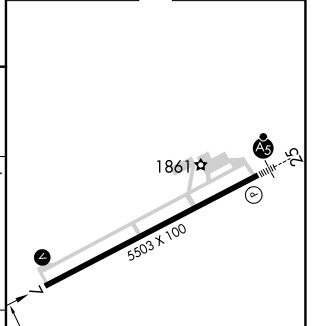
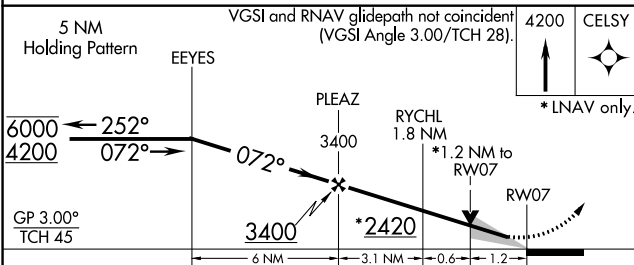
ASOS <b>119.025</b>	CLEVELAND CENTER <b>126.725 291.65</b>	UNICOM <b>123.0 (CTAF) 0</b>
------------------------	---	---------------------------------



NE-4, 02 DEC 2021 to 30 DEC 2021

NE-4, 02 DEC 2021 to 30 DEC 2021

ELEV 1817	<b>D</b> TDZE 1817
-----------	--------------------



CATEGORY	A	B	C	D
LPV DA		2017-3/4	200 (200-3/4)	
LNAV/VNAV DA		2160-1	343 (400-1)	
LNAV MDA	2240-1	423 (500-1)	2240-1 1/4	423 (500-1 1/4)
<b>C</b> CIRCLING	2320-1 503 (600-1)	2360-1 543 (600-1)	2380-1 1/2 563 (600-1 1/2)	2400-2 583 (600-2)

072° to RWY 7

HIRL Rwy 7-25 **0**

REL Rwy 7 **0**