

# TACAN RWY 12

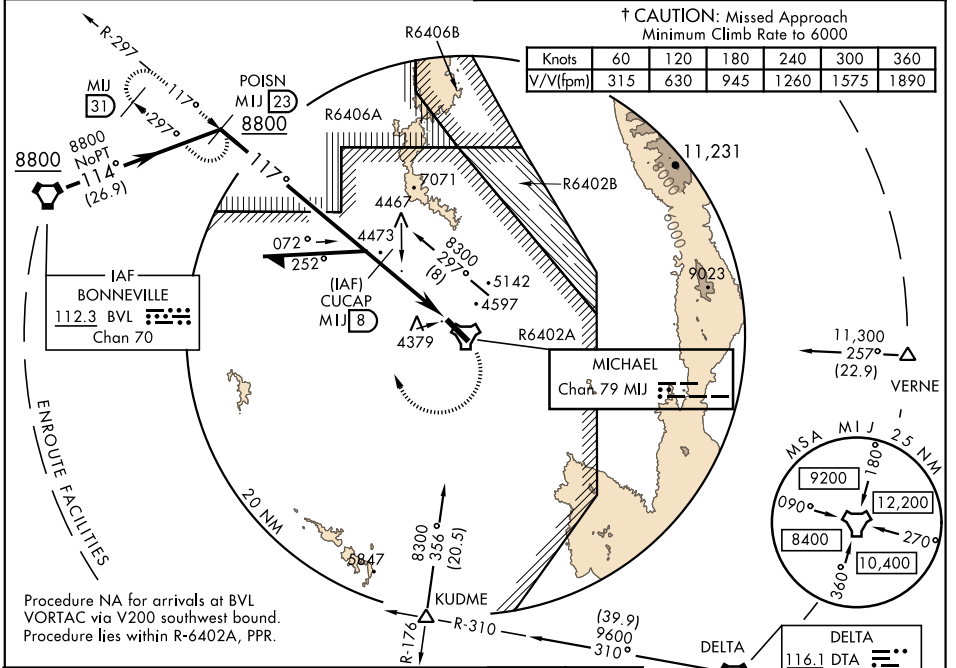
TACAN Chan	MIJ 79	APCH CRS 117°	Rwy ldg 10,000 TDZE 4346 Arprt Elev 4351
------------	--------	---------------	--

AL-5071 [USA]

MICHAEL AAF (KDPG)

▽ \* Obtain local altimeter setting on CTAF; when not received, use Wendover altimeter setting.
 MISSED APPROACH: Climbing right turn to 8800 via MIJ TACAN R-297 to POISN/MIJ 23 DME and hold.

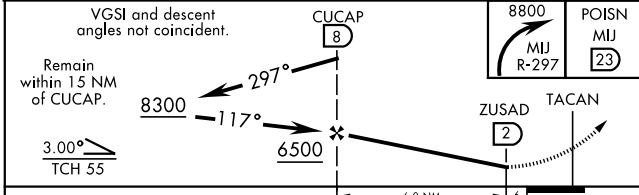
CLOVER CON <b>134.1 363.5</b>	CTAF <b>0 126.2 270.3</b>
----------------------------------	------------------------------



† CAUTION: Missed Approach Minimum Climb Rate to 6000

Knots	60	120	180	240	300	360
V/V(fpm)	31.5	630	945	1260	1575	1890

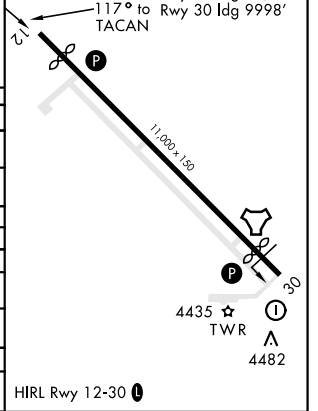
Procedure NA for arrivals at BVL VORTAC via V200 southwest bound. Procedure lies within R-6402A, PPR.



ELEV 4351	TDZE 4346
-----------	-----------

Rwy 12 ldg 10,000'  
Rwy 30 ldg 9998'

CATEGORY	A	B	C	D	E
S-12	4800-1	454 (500-1)	4800-1 $\frac{3}{8}$ 454 (500-1 $\frac{3}{8}$ )	5200-2 $\frac{1}{2}$	854 (900-2 $\frac{1}{2}$ )
<span style="border: 1px solid black; padding: 1px;">C</span> CIRCLING	4800-1 449 (500-1)	4920-1 569 (600-1)	5160-2 $\frac{1}{4}$ 809 (900-2 $\frac{1}{4}$ )	5880-3 1529 (1600-3)	6200-3 1849 (1900-3)
† BELOW MINIMA REQUIRES MISSED APPROACH CLIMB GRADIENT OF 31.5 ft/NM					
S-12	NA	NA	4800-1 $\frac{3}{8}$	454	(500-1 $\frac{3}{8}$ )
* WENDOVER ALTIMETER SETTING MINIMUMS					
S-12	4960-1	614 (700-1)	4960-1 $\frac{3}{4}$ 614 (700-1 $\frac{3}{4}$ )	5360-3	1014 (1100-3)
<span style="border: 1px solid black; padding: 1px;">C</span> CIRCLING	4960-1 609 (700-1)	5080-1 729 (800-1)	5320-3 969 (1000-3)	6040-3 1689 (1700-3)	6360-3 2009 (2100-3)
† BELOW MINIMA REQUIRES MISSED APPROACH CLIMB GRADIENT OF 31.5 ft/NM					
S-12	NA	NA	4960-1 $\frac{3}{4}$ 614 (700-1 $\frac{3}{4}$ )	4960-3	614 (700-3)



# TACAN RWY 12

SW-4, 02 DEC 2021 to 30 DEC 2021

SW-4, 02 DEC 2021 to 30 DEC 2021