


WAAS CH <b>58004</b> <b>W21A</b>	APP CRS <b>210°</b>	Rwy Idg TDZE Apt Elev	<b>6006</b> <b>697</b> <b>697</b>
--	------------------------	-----------------------------	---

# RNAV (GPS) RWY 21

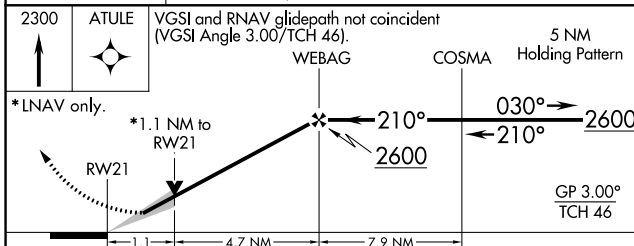
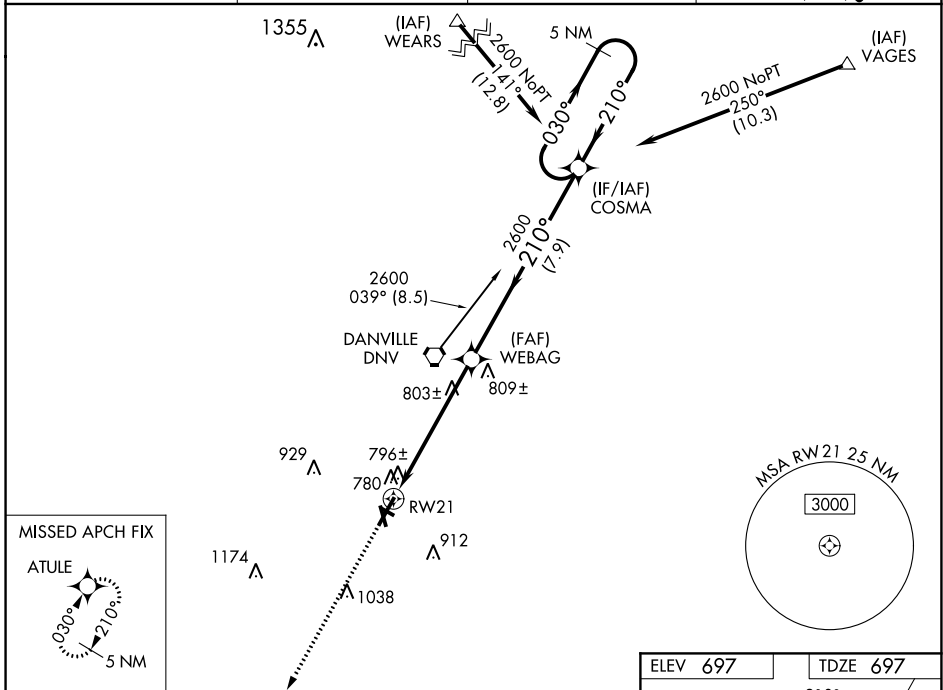
VERMILION RGNL (DNL)

**⚠** When local altimeter setting not received, use University of Illinois-Willard altimeter setting and increase LPV DA to 1074 feet and LNAV/VNAV DA to 1153 feet; increase all MDAs 100 feet and Circling Cat C visibility ¼ SM and Cat D visibility ½ SM. Circling NA to Rwy 12 and 30. Baro-VNAV and VDP NA when using University of Illinois-Willard altimeter setting. For uncompensated Baro-VNAV systems, LNAV/VNAV NA below -1.6°C (4°F) or above 47°C (116°F). For inop MALSR, increase LPV all Cats visibility to 1 mile and LNAV Cat D visibility to 1 ¼ mile. DME/DME RNP-0.3 NA.

MALSR 

**MISSED APPROACH:**  
Climb to 2300 direct ATULE and hold.

AWOS-3 <b>119.275</b>	CHAMPAIGN APP CON * <b>121.35 285.65</b>	CLNC DEL <b>121.7</b>	UNICOM <b>122.7 (CTAF)</b>
--------------------------	---	--------------------------	-------------------------------



ELEV 697	TDZE 697
----------	----------

This block contains a detailed diagram of RWY 21, showing the runway layout, taxiway, and holding pattern. Key features include:
 

- Runway:** RWY 21, 2500 x 150 ft.
- Obstacles:** 91, 718, 399 x 100, 600 x 100, 100 x 100.
- Gradients:** 0.8% UP, 0.3% UP, 0.3% UP, 0.6% UP.
- Other:** HIRL Rwy 3-21, M/RWY Rwy 16-34, REIL Rwy 16 and 34.

CATEGORY	A	B	C	D
LPV DA	990-½	293 (300-½)		
LNAV/VNAV DA	1069-¾	372 (400-¾)		
LNAV MDA	1080-½	383 (400-½)	1080-1	383 (400-1)
CIRCLING	1160-1	463 (500-1)	1240-1½	1340-2
			543 (600-1½)	643 (700-2)

EC-3, 02 DEC 2021 to 30 DEC 2021

EC-3, 02 DEC 2021 to 30 DEC 2021