

RNAV (GPS) RWY 3

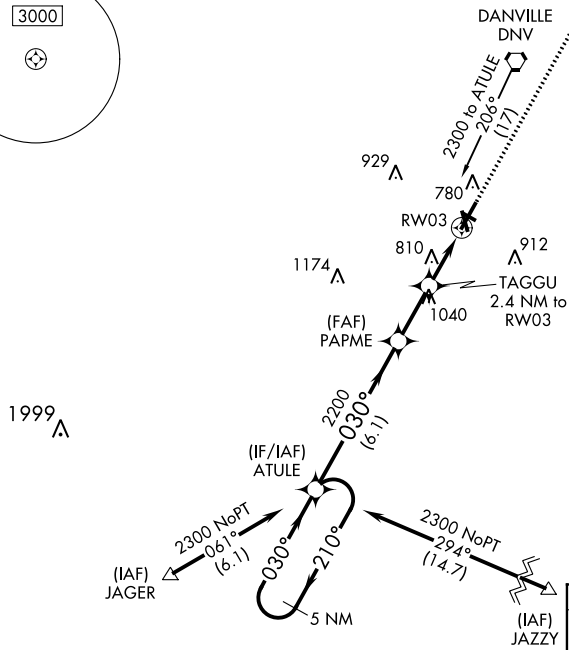
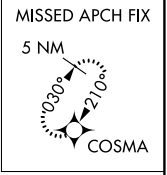
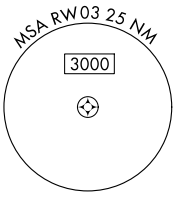
VERMILION RGNL (DNL)

APP CRS 030°	Rwy Idg 6006
	TDZE 674
	Apt Elev 697

⚠ When local altimeter setting not received, use University of Illinois-Willard altimeter setting and increase all MDAs 100 feet; increase Circling Cat C visibility ¼ SM and Cat D visibility ½ SM. Circling NA to Rwys 12 and 30. DME/DME RNP-0.3 NA. Helicopter visibility reduction below ¼ SM NA.

MISSED APPROACH: Climb to 2600 direct COSMA and hold.

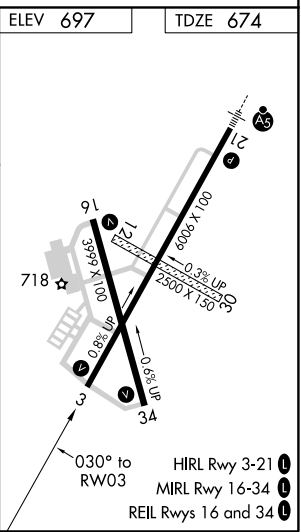
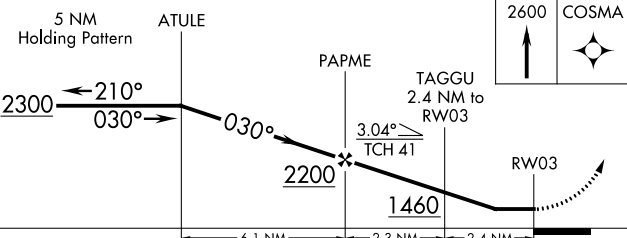
AWOS-3 119.275	CHAMPAIGN APP CON ★ 121.35 285.65	CLNC DEL 121.7	UNICOM 122.7 (CTAF) 0
--------------------------	---	--------------------------	---------------------------------



EC-3, 02 DEC 2021 to 30 DEC 2021

EC-3, 02 DEC 2021 to 30 DEC 2021

ELEV 697	TDZE 674
----------	----------



CATEGORY	A	B	C	D
LNAV MDA	1120-1	446 (500-1)	1120-1½ 446 (500-1½)	1120-1½ 446 (500-1½)
CIRCLING	1160-1	463 (500-1)	1240-1½ 543 (600-1½)	1340-2 643 (700-2)