

APP CRS 345°	Rwy Idg TDZE Apt Elev	3999 667 697
------------------------	-----------------------------	-----------------------------------------

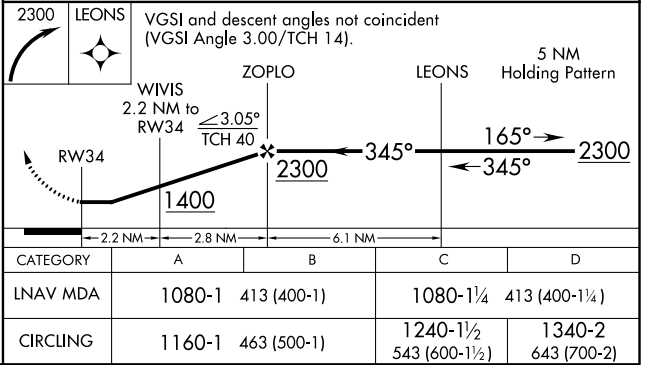
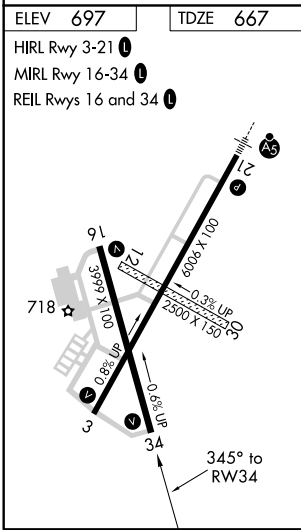
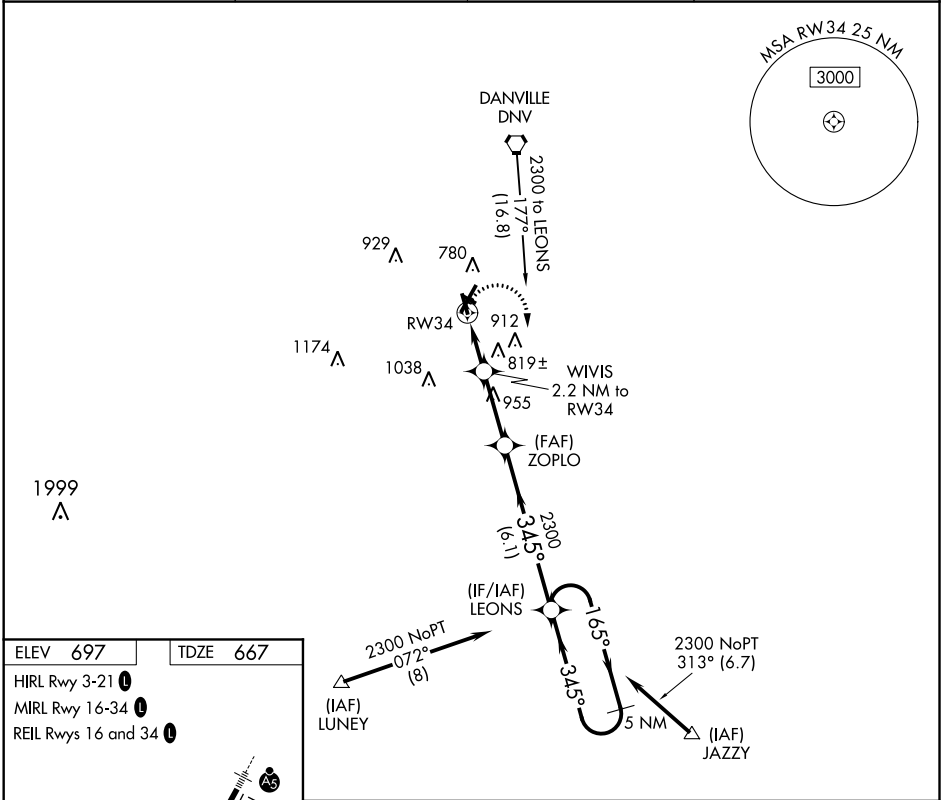
RNAV (GPS) RWY 34

VERMILION RGNL (DNV)

▼ When local altimeter setting not received, use University of Illinois-Willard altimeter setting and increase all MDAs 100 feet; increase Circling Cat C visibility ¼ SM and Cat D visibility ½ SM. Circling NA to Rwy's 12 and 30.
▲ DME/DME RNP-0.3 NA. Helicopter visibility reduction below ¾ SM NA.

MISSED APPROACH: Climbing right turn to 2300 direct LEONS and hold.

AWOS-3 119.275	CHAMPAIGN APP CON * 121.35 285.65	CLNC DEL 121.7	UNICOM 122.7 (CTAF)
--------------------------	---------------------------------------------	--------------------------	-------------------------------



EC-3, 02 DEC 2021 to 30 DEC 2021

EC-3, 02 DEC 2021 to 30 DEC 2021