

| | | |
|--|------------------------|---|
| VORTAC DNV 111.0 Chan 47 | APP CRS 016° | Rwy Idg 6006 TDZE 674 Apt Elev 697 |
|--|------------------------|---|

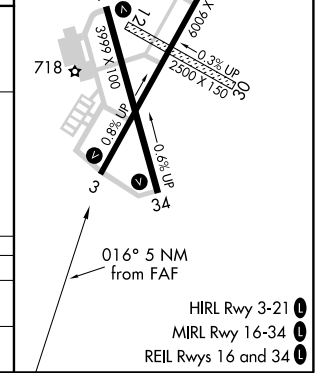
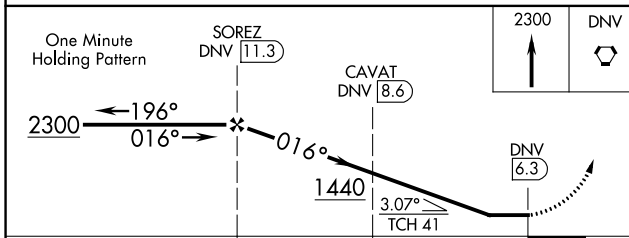
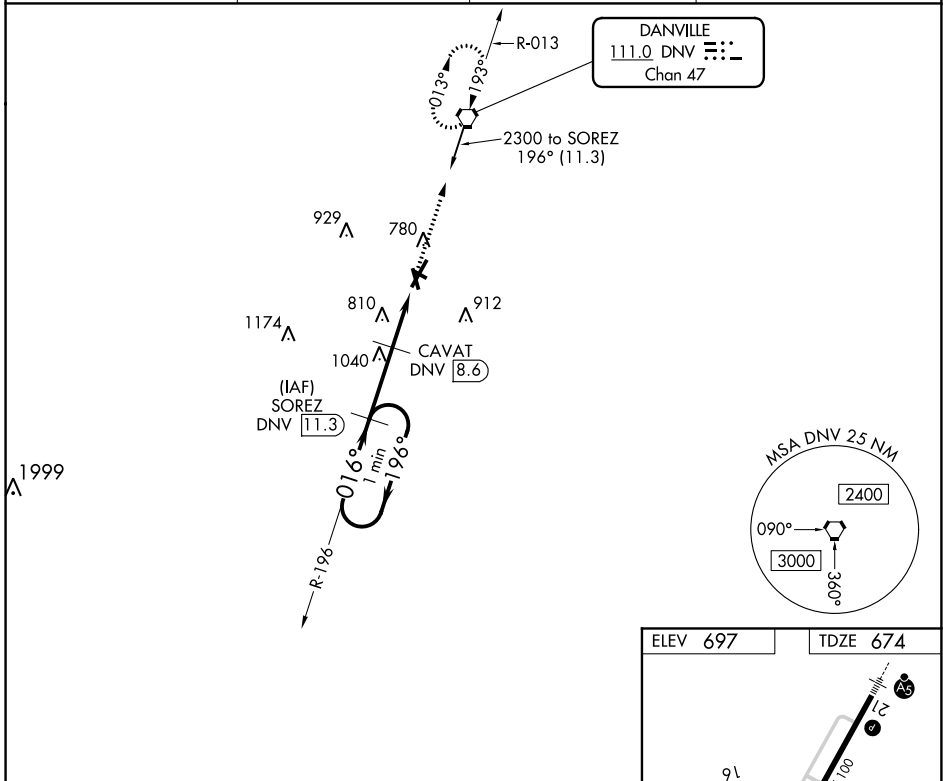
VOR/DME RWY 3

VERMILION RGNL (DNV)

▼ When local altimeter setting now received, use University of Illinois-Willard altimeter setting and increase all MDAs 100 feet; increase Circling C visibility ¼ SM and Cat D visibility ½ SM. Circling NA to Rwy 12 and 30. Helicopter visibility reduction below ¾ SM NA.

MISSED APPROACH: Climb to 2300 direct DNV VORTAC and hold.

| | | | |
|--------------------------|---|--------------------------|-------------------------------|
| AWOS-3 119.275 | CHAMPAIGN APP CON ★ 121.35 285.65 | CLNC DEL 121.7 | UNICOM 122.7 (CTAF) |
|--------------------------|---|--------------------------|-------------------------------|



| CATEGORY | A | B | C | D |
|----------|--------|-------------|-------------------------|-------------------------|
| S-3 | 1120-1 | 446 (500-1) | 1120-1¼ 446 (500-1¼) | 1120-1½ 446 (500-1½) |
| CIRCLING | 1160-1 | 463 (500-1) | 1240-1½ 543 (600-1½) | 1340-2 643 (700-2) |

- HIRL Rwy 3-21
- MIRL Rwy 16-34
- REIL Rws 16 and 34

EC-3, 02 DEC 2021 to 30 DEC 2021

EC-3, 02 DEC 2021 to 30 DEC 2021