

VORTAC ICT <b>113.8</b> Chan <b>85</b>	APP CRS <b>283°</b>	Rwy Idg TDZE Apt Elev	<b>N/A</b> <b>N/A</b> <b>1378</b>
--	------------------------	-----------------------------	---

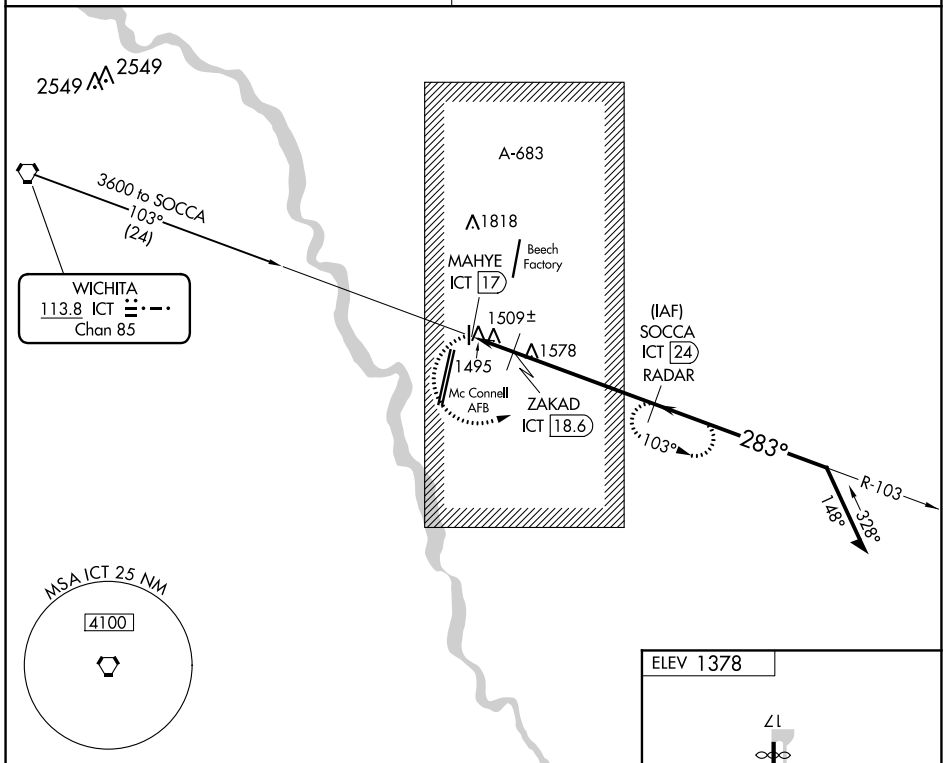
**VOR-C**  
CESSNA ACFT FLD (CEA)

**NA** Use Wichita Dwight D Eisenhower Ntl altimeter setting. Procedure not authorized at night. DME or RADAR required.

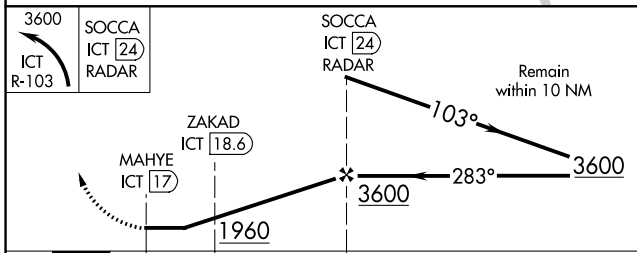
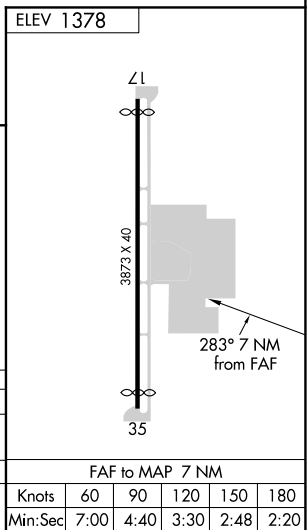
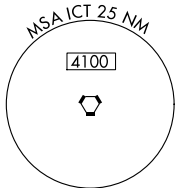
MISSED APPROACH: Climbing left turn to 3600 via ICT R-103 to SOCCA 24 DME/RADAR and hold.

WICHITA APP CON  
**134.8 269.1**

CTAF  
**122.9**



WICHITA  
113.8 ICT  
Chan 85



CATEGORY	A	B	C	D
CIRCLING	1960-1	582 (600-1)	1960-1½ 582 (600-1½)	NA
ZAKAD FIX MINIMUMS				
CIRCLING	1840-1	462 (500-1)	1960-1½ 582 (600-1½)	NA

NC-2, 02 DEC 2021 to 30 DEC 2021

NC-2, 02 DEC 2021 to 30 DEC 2021

FAF to MAP 7 NM					
Knots	60	90	120	150	180
Min:Sec	7:00	4:40	3:30	2:48	2:20