

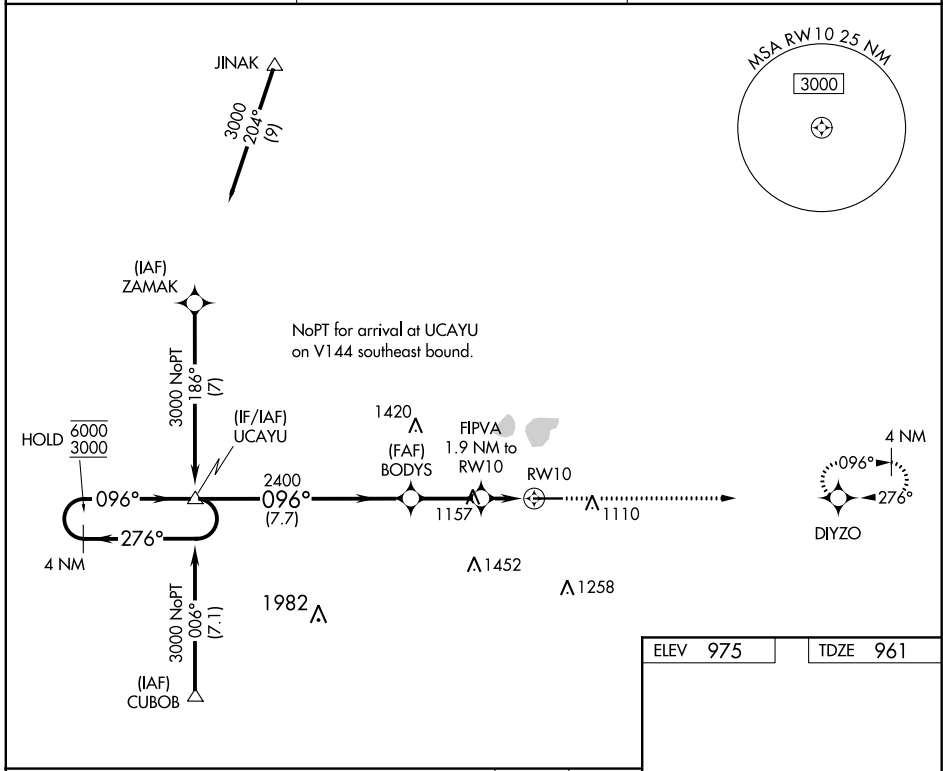
WAAS CH <b>65816</b> <b>W10A</b>	APP CRS <b>096°</b>	Rwy ldg TDZE Apt Elev	<b>6000</b> <b>961</b> <b>975</b>
--	------------------------	-----------------------------	---

# RNAV (GPS) RWY 10

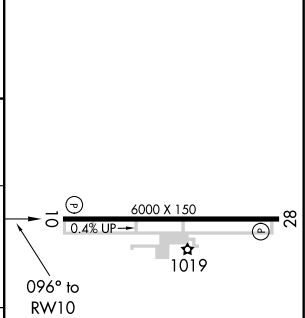
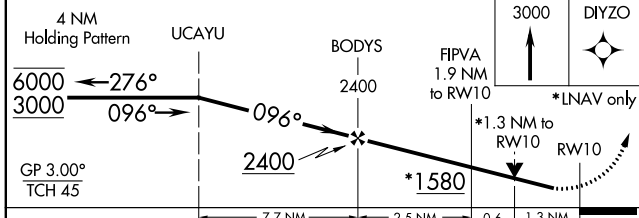
LIMA ALLEN COUNTY (AOH)

RNP APCH.	Rwy 10 helicopter visibility reduction below 3/4 SM NA. For uncompensated Baro-VNAV systems, LNAV/VNAV NA below -16°C or above 54°C.	MISSED APPROACH: Climb to 3000 direct DIYZO and hold.
-----------	--	---

ASOS <b>128.725</b>	COLUMBUS APP CON <b>118.425 323.15</b>	UNICOM <b>122.7 (CTAF) 0</b>
------------------------	---	---------------------------------



ELEV 975	TDZE 961
----------	----------



CATEGORY	A	B	C	D
LPV DA	1211-1 250 (300-1)			
LNAV/VNAV DA	1272-1 311 (300-1)			
LNAV MDA	1420-1 459 (500-1)		1420-1 3/8 459 (500-1 3/8)	

REIL Rwy 10 and 28 $\bullet$
HIRL Rwy 10-28 $\bullet$

EC-2, 02 DEC 2021 to 30 DEC 2021

EC-2, 02 DEC 2021 to 30 DEC 2021